



San Jose

  
MARSHALLWHITE  
ONE

2/417 Wattletree Road  
Malvern East



## San Jose - Exquisite Parkside Art Deco Excellence

Impossible to resist, this impressively proportioned, two bedroom, Art Deco apartment enjoys a privileged first floor / top floor position in the boutique 'San Jose' building that directly overlooks the picturesque expanses of Malvern East's renowned Central Park. Inside a generous entry hall, a large lounge and semi-attached dining with two open fire places flows to a Bosch-equipped, kitchen / meals that highlights original built-in bench seating, urban rooftop views, a private rear balcony and an opportunity to refurbish at your leisure. Set within generous gardens with a lock-up garage, original stucco plaster, windows and fine detail, the home is truly first class and also features large bedrooms with built-in robes as well as central heating. You will relish having quality cafes, restaurants within metres, as well as city-bound trams along Wattletree Rd and Malvern Central Shopping Centre just around the corner.

2-417wattletreeroad-malverneast.com 2 1 1

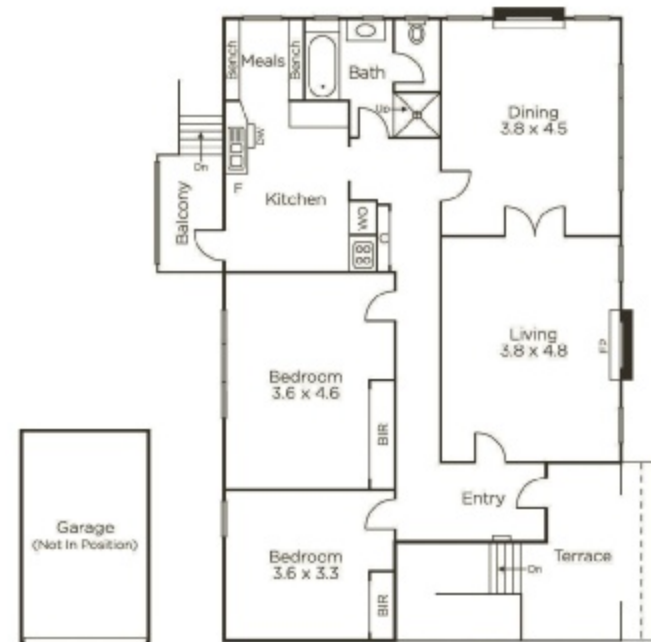
Auction Saturday 19th October at 1.30pm

Joseph Ben-Danan 0408 135 948

1111 High Street Armadale

Gareth MacLeod 0409 920 553

9822 9999 mwone.com.au



MARSHALLWHITE  
ONE

Disclaimer: Information provided is believed to be accurate as at the date of printing, no responsibility is taken for any errors or omissions. It is your responsibility to obtain independent, professional advice. Personal information collected from you is for security purposes to contact you should the property sell prior to auction. We may use this information to provide you with other real estate services including referrals to authorized financial services' providers. Visit our website at [www.mwone.com.au](http://www.mwone.com.au) for our privacy policy.