




MARSHALLWHITE

24 Kerferd Street
Malvern East



"STRETFORD"

This Edwardian residence's gracious dimensions offer an outstanding opportunity to renovate and extend (STCA). Superbly situated on a 708sqm approx. garden allotment in the Gascoigne Estate, it possesses all the elements to become an unforgettable family domain. Ornate ceilings and Baltic pine floors define the elegant sitting room with open fire and grand formal dining boasting a marble open fire. The four bedrooms, are accompanied by two updated bathrooms. A well appointed kitchen and living/dining room open to the deep private garden with heated pool.

24kerferdstreet-malverneast.com

4 2 2

Auction Saturday 8th April at 10.30am

Rae Tomlinson 0418 336 234

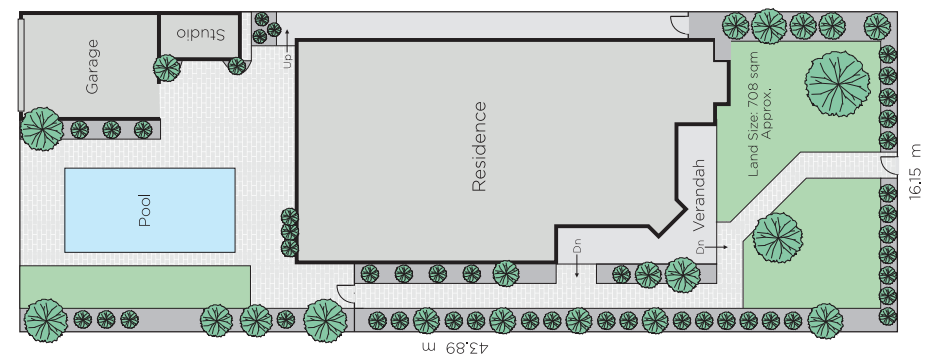
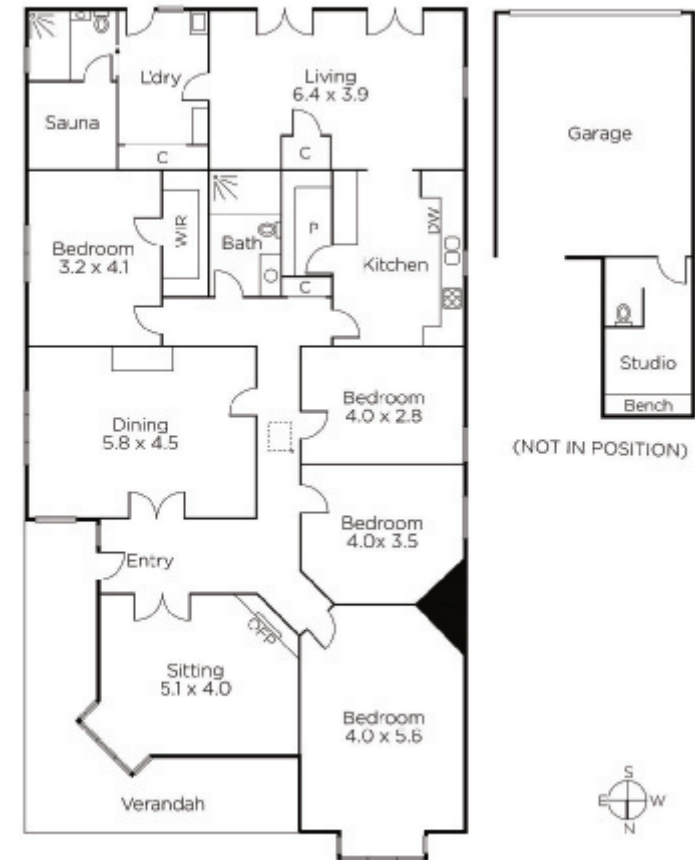
Hugh Tomlinson 0409 427 483

James Tomlinson 0408 350 684

1111 High Street Armadale

marshallwhite.com.au


MARSHALLWHITE



Disclaimer: Information provided is believed to be accurate as at the date of printing, no responsibility is taken for any errors or omissions. It is your responsibility to obtain independent, professional advice. Personal information collected from you is for security purposes and to contact you should the property sell prior to auction. We may use this information to provide you with other real estate services including referrals to authorised financial services' providers. Visit our website at www.marshallwhite.com.au for our privacy policy.