



MARSHALLWHITE

24 Drysdale Street
Port Melbourne



Inspired Design, Idyllic Location

Brilliantly designed by Jackson Clements Burrows, this stunning contemporary residence provides an idyllic lifestyle near Bay St, parks, the beach and light rail. A soaring ceiling accentuates natural light and space in the living/dining room with gas fire and sensational Poggenpohl gourmet kitchen opening to a private north-facing balcony. The main bedroom with designer en-suite, built in robe is accompanied by a second bedroom (robe), stylish bathroom and study. A large rooftop deck offers city views. Includes alarm, video intercom, ducted vacuum, heating, solar panels, surround sound, Euro-laundry and double garage.

24drysdalestreet-portmelbourne.com



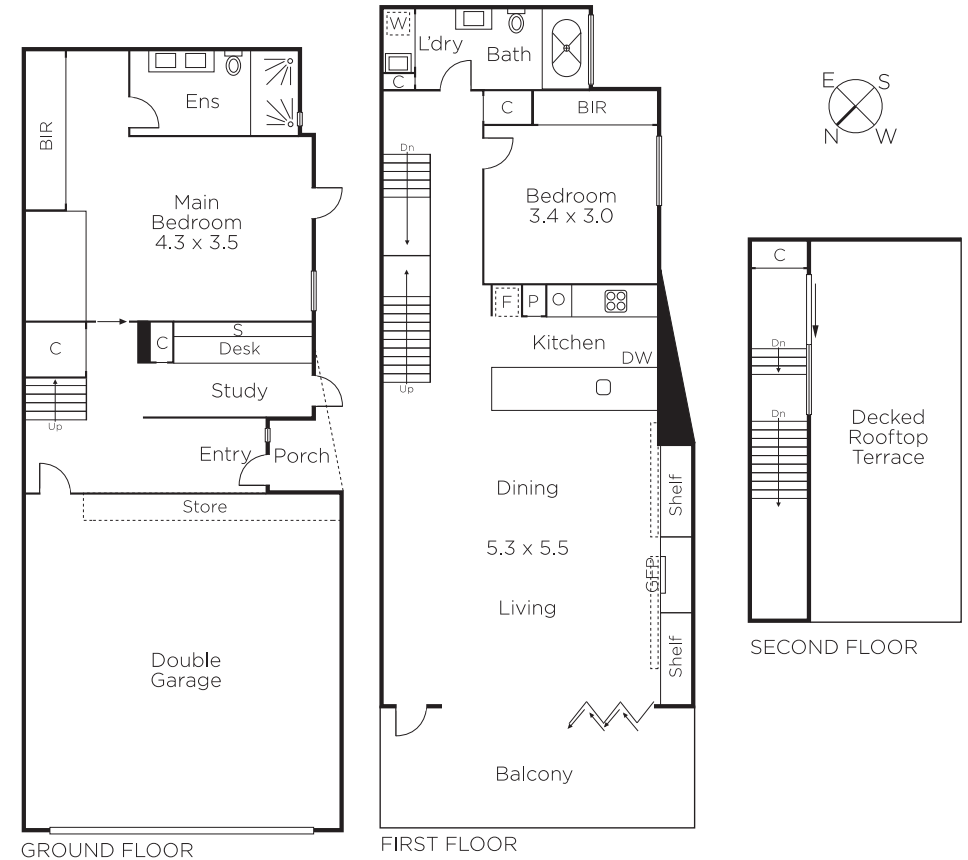
Auction Saturday 24th February at 12.30pm

Justin Holod
0411 669 161

Georgia Whitford
0434 827 563


MARSHALLWHITE

101 Dundas Place, Albert Park



Disclaimer: Information provided is believed to be accurate as at the date of printing, no responsibility is taken for any errors or omissions. It is your responsibility to obtain independent, professional advice. Personal information collected from you is for security purposes and to contact you should the property sell prior to auction. We may use this information to provide you with other real estate services including referrals to authorised financial services providers. Visit our website at www.marshallwhite.com.au for our privacy policy.