




MARSHALLWHITE

24 Alexander Street
Box Hill



Period Perfection Meets Modern Style

Displaying an exquisite blend of period charm & contemporary style, this captivating c1927 residence's impressive family appeal is enhanced by its exceptional scale & enviable location near Surrey Park, Aqualink, schools, Mont Albert Village & Box Hill station. Baltic pine floors & high ceilings distinguish the wide hall & beautiful formal rooms. Timber floors continue through the living/dining room (OFF) & gourmet kitchen opening to a large Nth garden. Four bedrooms (main with ensuite), a study/5th bedroom & second bathroom complete the picture. Includes alarm, powder-rm, laundry & double carport.

24alexanderstreet-boxhill.com

5 2 2

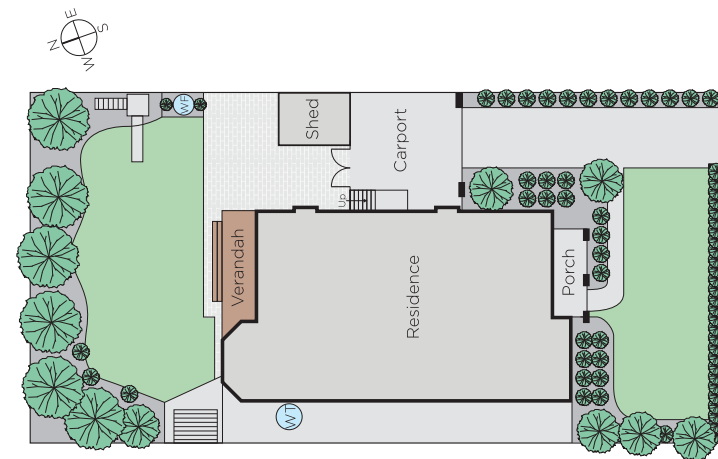
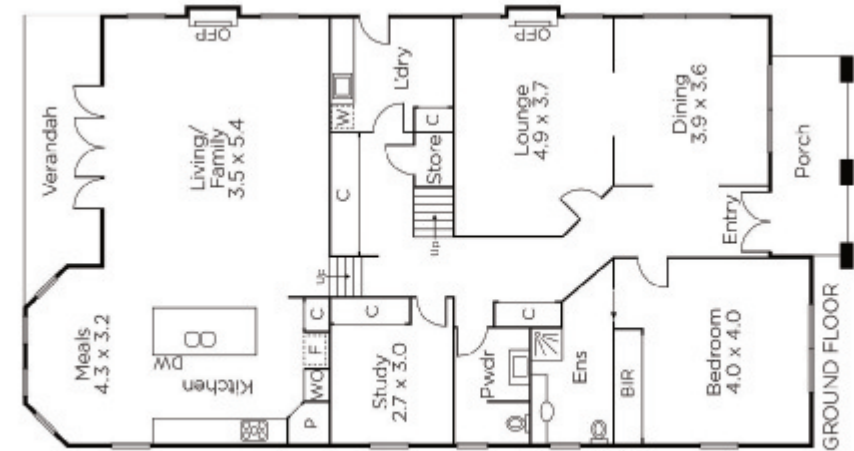
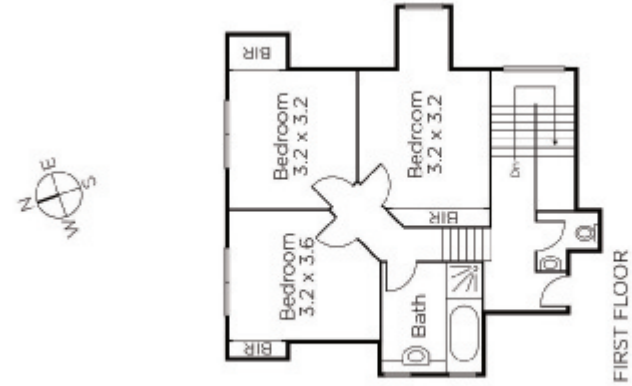
Auction Saturday 13th May at 2.30pm

Robert Ding 0418 858 393

Anton Zhouk 0430 224 438

801 Glenferrie Road Hawthorn
marshallwhite.com.au


MARSHALLWHITE



Disclaimer: Information provided is believed to be accurate as at the date of printing, no responsibility is taken for any errors or omissions. It is your responsibility to obtain independent, professional advice. Personal information collected from you is for security purposes and to contact you should the property sell prior to auction. We may use this information to provide you with other real estate services including referrals to authorised financial services' providers. Visit our website at www.marshallwhite.com.au for our privacy policy.