



MARSHALLWHITE

23 Pearson Street  
Brighton



## Single-Level and so Close to Bay Street

A central address metres from cafes and shops has everything you need for now and impressive potential if you ever desire more space. Two-bedroom and study single-level home on 286sqm approx. is ready to enjoy easy-care design, recent updates, and scope for the future STCA. Corner location has a north-facing boundary, Middle Brighton Tennis Club is opposite, and there's no overlooking so you can enjoy the private rear courtyard. Living and dining zone, kitchen with meals area, newly renovated bathroom, and rear remote-control garage. Central address with trains, schools, cinemas and restaurants around the corner.

2 1 2

Auction Saturday 8th December at 3.30pm

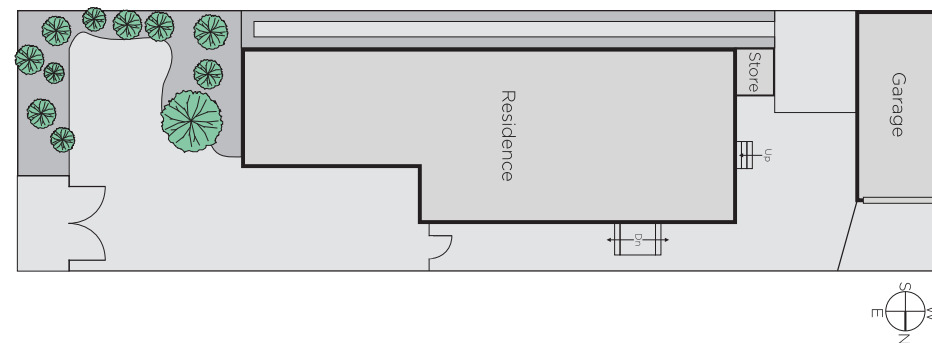
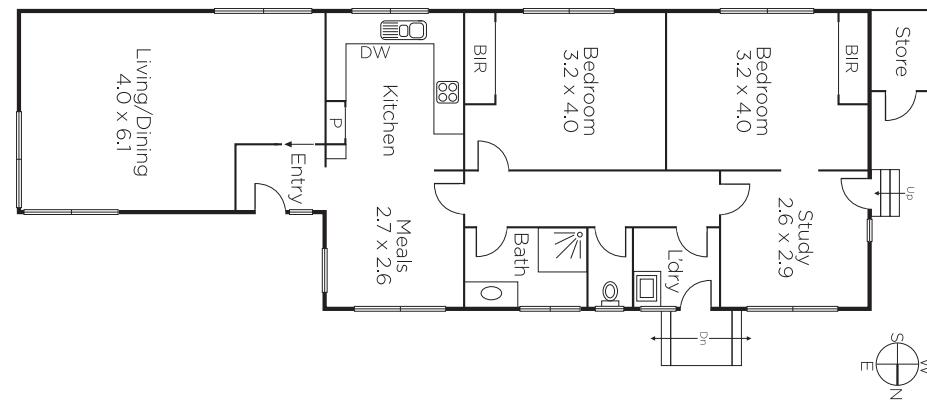
**Kate Strickland**  
0400 125 946

**Dahli Woosnam**  
0435 505 309

**Matthew Pillios**  
0408 145 982

  
**MARSHALLWHITE**

225 Bay Street, Brighton



Disclaimer: Information provided is believed to be accurate as at the date of printing, no responsibility is taken for any errors or omissions. It is your responsibility to obtain independent, professional advice. Personal information collected from you is for security purposes and to contact you should the property sell prior to auction. We may use this information to provide you with other real estate services including referrals to authorised financial services providers. Visit our website at [www.marshallwhite.com.au](http://www.marshallwhite.com.au) for our privacy policy.