



MARSHALLWHITE

23 Milverton Street  
Camberwell











## Prized Position, Period Perfection

Defined by enticing period charm, light-filled modern style and a superb north-facing garden allotment (700sqm approx.), the immediate family appeal of this captivating single level c1930's 4 bedroom residence is further enhanced by an enviable location near schools, Leo's Supermarket, local parks, cafes and public transport. Ornate Deco ceilings and timber floors add rich period character to the central entrance hall and inviting sitting room. Timber floors continue through the modern granite stone kitchen and generously proportioned open plan living and dining rooms. The living areas extend out to a large covered entertaining deck and overlook the deep private north-facing landscaped garden. Expansive lawns and an outdoor multipurpose room provide the ideal space for family recreation. The main bedroom featuring an en-suite and large walk in robe enjoys its own space away from three additional double bedrooms and a stylish marble bathroom. Perfect to move in and immediately enjoy, this solid brick home is situated in the coveted Hartwell Primary and Camberwell High School zones. It also features zoned ducted heating/cooling, automatic watering system, garden shed, water tanks and double carport.

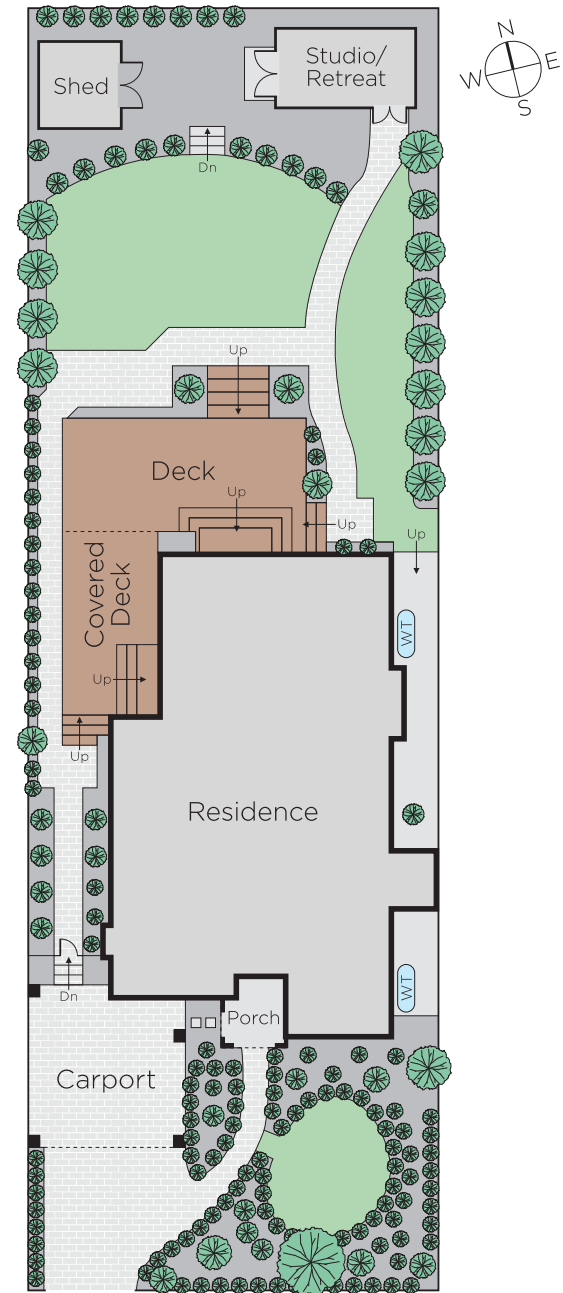
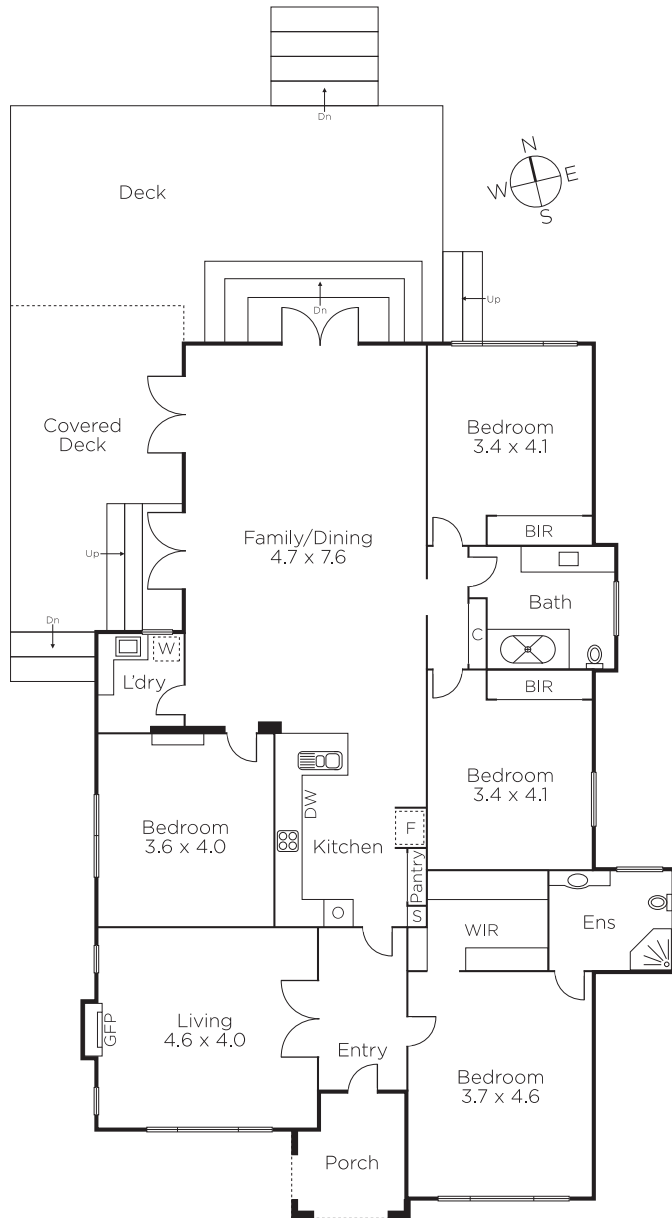
4  2  2 

Auction Saturday 8th September at 10.30am

**Désirée Wakim**  
0412 336 266

**Hamish Tostevin**  
0408 004 766

  
**MARSHALLWHITE**  
801 Glenferrie Road, Hawthorn



Disclaimer: Information provided is believed to be accurate as at the date of printing, no responsibility is taken for any errors or omissions. It is your responsibility to obtain independent, professional advice. Personal information collected from you is for security purposes and to contact you should the property sell prior to auction. We may use this information to provide you with other real estate services including referrals to authorised financial services' providers. Visit our website at [www.marshallwhite.com.au](http://www.marshallwhite.com.au) for our privacy policy.