



  
MARSHALLWHITE

23 Margaret Street  
Canterbury





## "Hatfield" c1920 - Period Harmony Shines Through

Great care and attention to detail has ensured the hallmark of this character-filled solid brick Edwardian family residence is the harmonious blend of period attributes with the newer contemporary living spaces in a split-level rear extension. Highlighted by a tessellated tile entrance, pressed metal ceilings, decorative cornices, leadlight windows and doors, timber fretwork arch and Baltic Pine floors delivering loads entertaining space whilst boasting a prized Maling Road precinct location. The interior features an entrance hall, formal sitting room, beautiful adjacent dining room, two downstairs bedrooms, main/WIR/ensuite plus a family bathroom. Through to a warm timber/granite, Bosch/Miele equipped kitchen and dining leading to the two upper level bedrooms and second bathroom; plus lower level laundry, WC and living room flowing to a wrap around verandah. Which overlooks a lovely garden with brick paved outdoor dining, tranquil water feature and lines of ornamental trees and camellias. Other features include period-style bathrooms, ducted heating, original OFPs, reverse-cycle air conditioners (meals/living & upstairs bedroom), tree-top views & City skyline glimpses, remote roller door, double carport with internal access & ROW.

[23margaretstreet-canterbury.com](http://23margaretstreet-canterbury.com)

4  3  2 

Auction Saturday 16th September at 10.30am

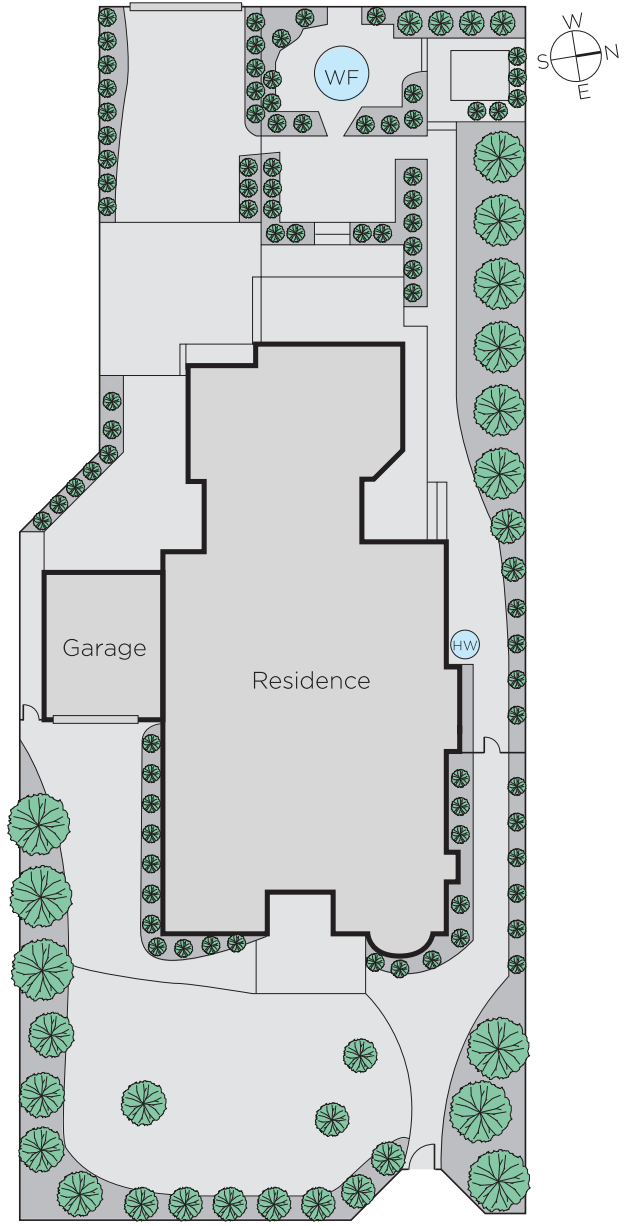
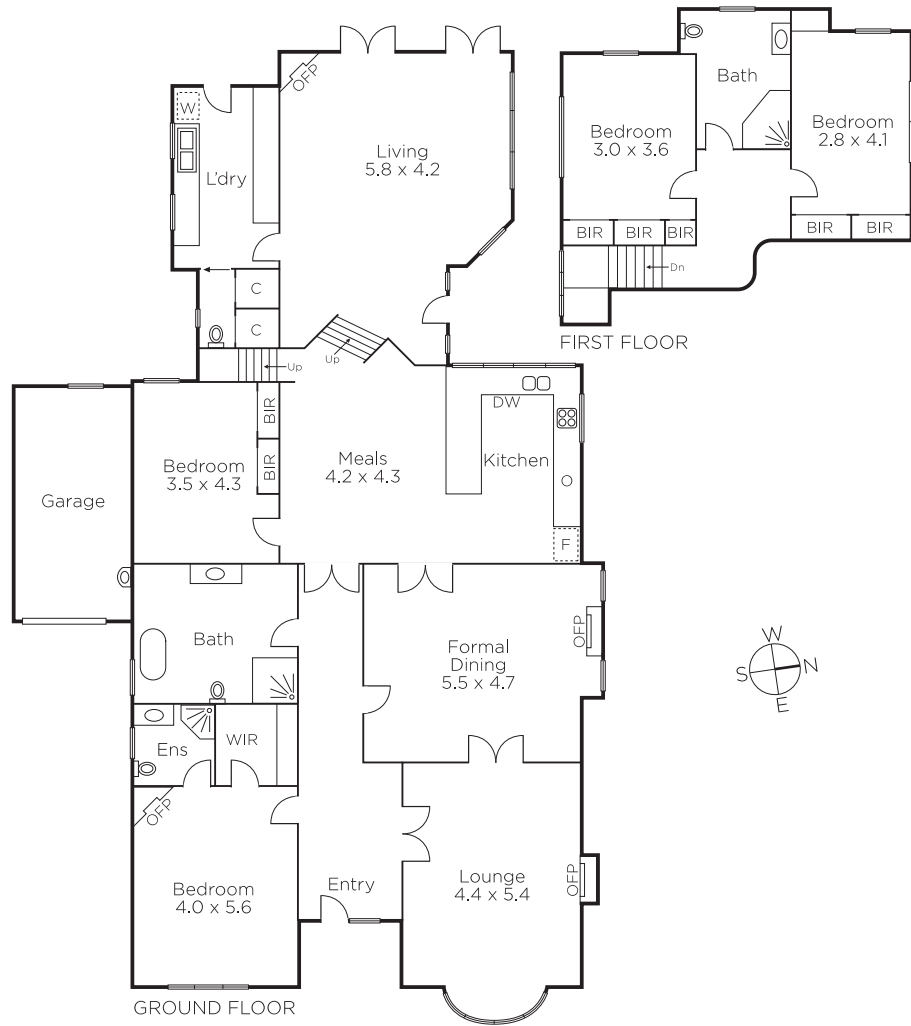
Duane Wolowiec 0418 567 581

Hamish Tostevin 0408 004 766

801 Glenferrie Road Hawthorn

[marshallwhite.com.au](http://marshallwhite.com.au)

  
MARSHALLWHITE



Disclaimer: Information provided is believed to be accurate as at the date of printing, no responsibility is taken for any errors or omissions. It is your responsibility to obtain independent, professional advice. Personal information collected from you is for security purposes and to contact you should the property sell prior to auction. We may use this information to provide you with other real estate services including referrals to authorised financial services' providers. Visit our website at [www.marshallwhite.com.au](http://www.marshallwhite.com.au) for our privacy policy.