



  
MARSHALLWHITE

222 Esplanade West  
Port Melbourne





## Spectacular City Views & Cutting Edge Design

Architecturally breathtaking, this contemporary residence's innovative design showcases exceptional versatility and brilliant indoor/outdoor entertaining idyllically situated near parks, Bay St, the beach and the city.

From the striking exterior to the dramatic entrance hall leading to beautiful sitting room and expansive living and dining room with state of the art Miele kitchen. Living opens to a glorious courtyard and bluestone paved 2-car garage. A captivating main bedroom with lavish en-suite/BIR, two further bedrooms (BIRs) and chic bathroom are accompanied by a 4th bedroom/home office with bathroom above the garage. A sensational rooftop terrace with concealed BBQ kitchen captures panoramic city views. Appointed with hydronic heating, air-conditioning, alarm, keyless/mobile app entry, video intercom, ducted vacuum, remote blinds, i-pad controls, multi room Sonos and Bowers & Wilkins theatre system.

222esplanadewest-portmelbourne.com

4 3 2

Auction Saturday 2nd September at 2.30pm

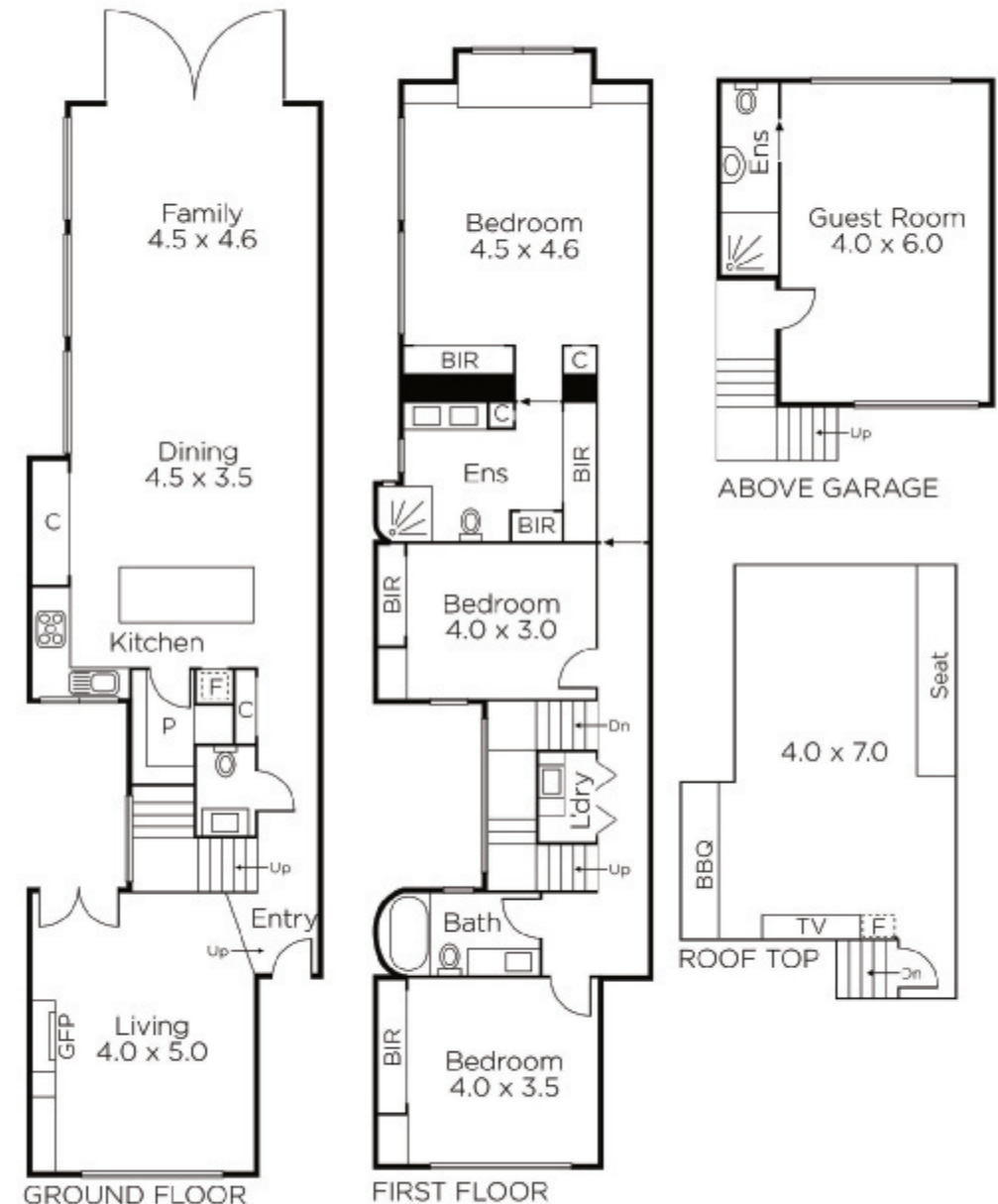
Oliver Bruce 0409 856 599

Sarah Wood 0408 902 827

Nicholas Hoo 0435 728 272

101 Dundas Place Albert Park  
marshallwhite.com.au

  
MARSHALLWHITE



Disclaimer: Information provided is believed to be accurate as at the date of printing, no responsibility is taken for any errors or omissions. It is your responsibility to obtain independent, professional advice. Personal information collected from you is for security purposes and to contact you should the property sell prior to auction. We may use this information to provide you with other real estate services including referrals to authorised financial services' providers. Visit our website at [www.marshallwhite.com.au](http://www.marshallwhite.com.au) for our privacy policy.