



MARSHALLWHITE
ONE

2/22 Burwood Road
Hawthorn



'Whitehall': Rare Parkside Deco Dream

A crisp, white and contemporary renovation complements the towering ceilings, fine detail and polished timber floors of this classical, vast and light-filled, two bedroom, north-facing art deco apartment with views across St. James Park. Enhanced by a timeless blend of stone bench tops and soft close cabinetry, the home's kitchen meals is semi-attached to both an exquisite lounge/dining with a marble open-fire place, and to a rear deck, while the bedrooms are particularly well-proportioned - one with huge double robes. Also features a vogue bathroom/laundry, separate WC and reverse cycle air conditioning. Grandly elevated from the street and central to everything, you simply head downstairs and wander into Hawthorn West for a coffee, a bite to eat or a spot of shopping, while a more cosmopolitan experience awaits on Bridge Rd. The number 75 tram brings the CBD or MCG within easy reach, while the Yarra River is metres away.

2-22burwoodroad-hawthorn.com

2 1

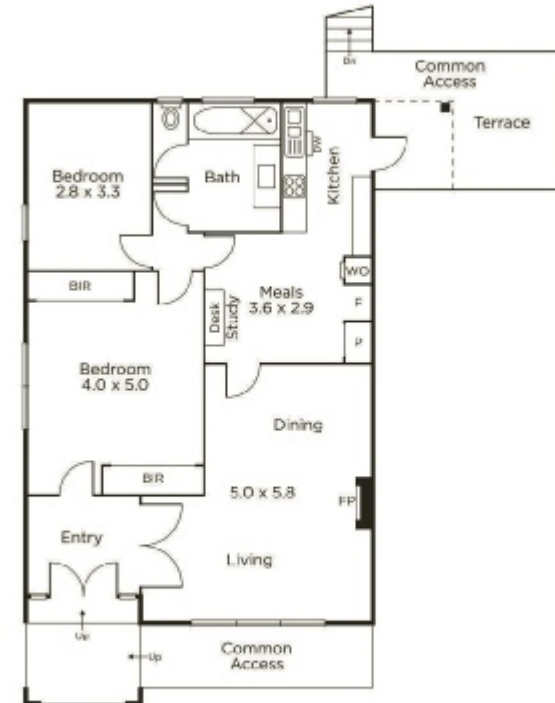
Auction Saturday 13th April at 9.30am

James Hill 0402 421 154

Ash Sachdev 0402 425 661

801 Glenferrie Road Hawthorn

9822 9999 mwone.com.au




MARSHALLWHITE
ONE

Disclaimer: Information provided is believed to be accurate as at the date of printing, no responsibility is taken for any errors or omissions. It is your responsibility to obtain independent, professional advice. Personal information collected from you is for security purposes to contact you should the property sell prior to auction. We may use this information to provide you with other real estate services including referrals to authorized financial services providers. Visit our website at www.mwone.com.au for our privacy policy.