




MARSHALLWHITE

22 Wahroonga Road
Murrumbena



Enticing Charm, Envable Location

In a peaceful cul de sac near Boyd Park, schools, Murrumbena station and Chadstone, this charming c1920's residence delivers immediate family appeal with exciting prospects to further update within a large private 710sqm approx. garden allotment. Ornate ceilings and leadlight windows are featured in the wide central hall, beautiful sitting room (open fire) and glorious main bedroom (robes). Two additional bedrooms (robes) are complemented by a study and smart bathroom. The inviting dining room, open plan kitchen and family room open to the landscaped garden. Includes powder-room, laundry, pull down attic storage, gazebo, shed, central heating & air conditioned main bedroom & family rooms.

22wahroongaaroad-murrumbena.com

4 1 2

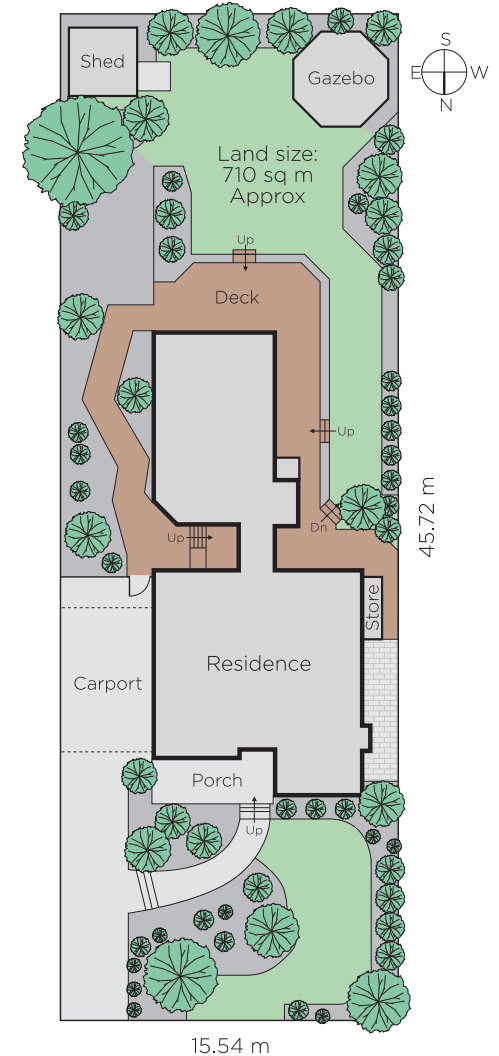
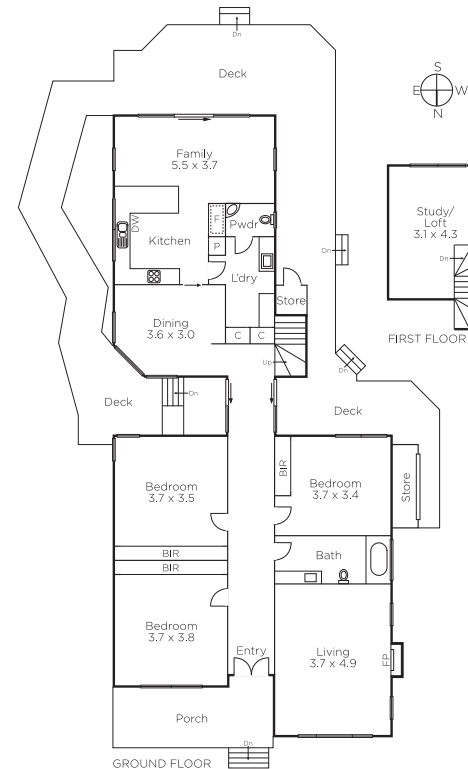
Auction Saturday 24th June at 1.30pm

Jason Brinkworth 0416 006 282

Clare Moloney 0401 546 441

1111 High Street Armadale
marshallwhite.com.au


MARSHALLWHITE



Disclaimer: Information provided is believed to be accurate as at the date of printing, no responsibility is taken for any errors or omissions. It is your responsibility to obtain independent, professional advice. Personal information collected from you is for security purposes and to contact you should the property sell prior to auction. We may use this information to provide you with other real estate services including referrals to authorised financial services' providers. Visit our website at www.marshallwhite.com.au for our privacy policy.