



22



MARSHALLWHITE

22 Loch Street  
Hawthorn East





## Inviting Spaces, Idyllic Location

This beautifully refurbished three bedroom, two bathroom single level residence delivers impressive lifestyle appeal in the Camberwell Primary and Canterbury Girls School zones. Timber floors flow through the light-filled and superbly proportioned open plan living and dining room with a roaring fireplace and gourmet kitchen featuring stone benches. Full width bi-fold doors open the living spaces completely to the private west-facing leafy garden with an entertaining deck. With nothing more to do but enjoy, this stunning home also includes audio-wiring, laundry and garage.

3 2 1

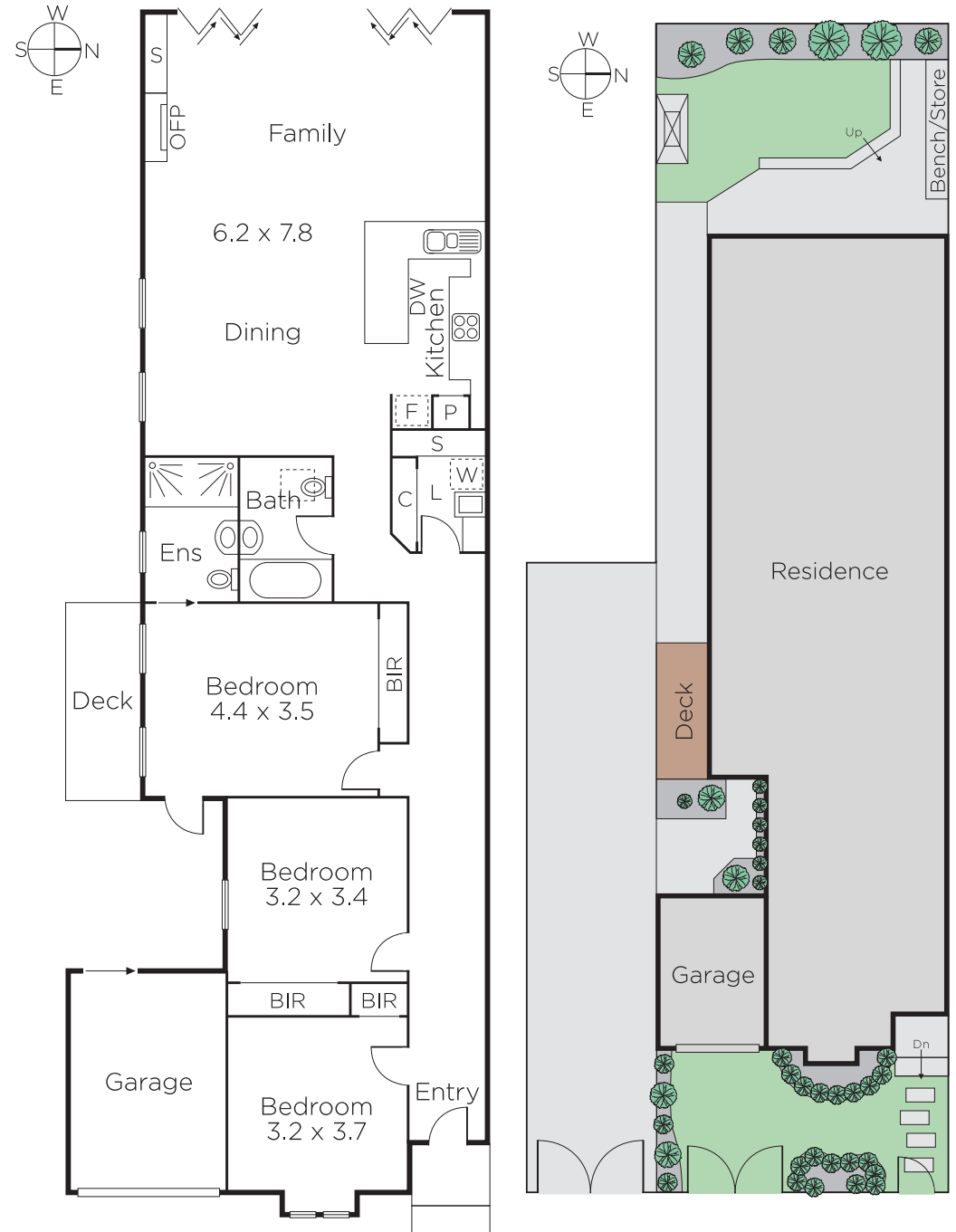
Auction Saturday 15th September at 2.30pm

**Nicholas Franzmann**  
0412 247 175

**Kathy Malcolm**  
0416 279 966

  
**MARSHALLWHITE**

801 Glenferrie Road, Hawthorn



Disclaimer: Information provided is believed to be accurate as at the date of printing, no responsibility is taken for any errors or omissions. It is your responsibility to obtain independent, professional advice. Personal information collected from you is for security purposes and to contact you should the property sell prior to auction. We may use this information to provide you with other real estate services including referrals to authorised financial services providers. Visit our website at [www.marshallwhite.com.au](http://www.marshallwhite.com.au) for our privacy policy.