




MARSHALLWHITE
ONE

2/2 Gordon Grove
South Yarra



Delightful South Yarra Perspective

Delightfully cosy and enlightened by a glorious northern orientation, this newly renovated apartment enjoys a prime position on Punt Hill, so that it blends elevated views that include the iconic Nylex Clock. Spacious and easily maintained, this two bedroom home is an ideal base for enjoying the full diversity of this blue chip inner-suburban setting. A generous lounge/dining flows to the home's north-facing balcony and features microfiber blinds whilst the kitchen is terrific with stone benches. Each of the bedrooms has robes, the bathroom is wonderfully renovated with a European laundry and separate wc, whilst, most importantly, there is intercom entry and a highly coveted under cover parking space. From this privileged position, you not only have all the shops, cafes, restaurants and nightlife of Toorak Rd and Chapel St nearby, but also the Botanical Gardens and Yarra trails are nearby to add a diversity of outdoor lifestyle options as well.

2-2gordongrove-southyarra.com

2 1 1

Auction Saturday 21st October at 10.30am

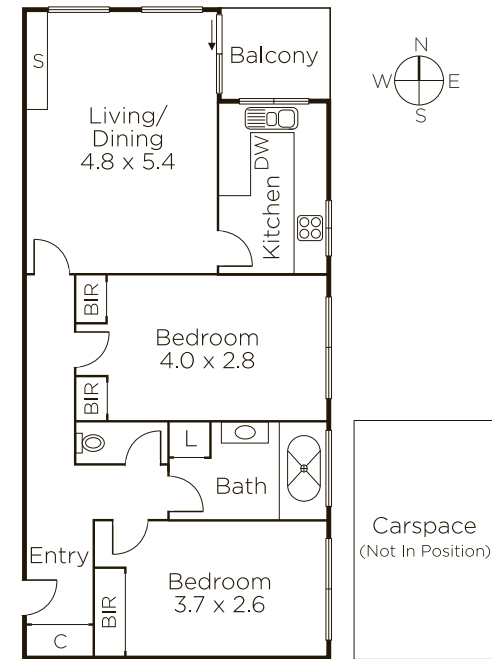
Matt Giulieri 0407 851 206

Vanessa Pleasance 0413 801 151

Jack Nicol 0400 774 428

1111 High Street Armadale

9822 9999 mwone.com.au



MARSHALLWHITE
ONE

Disclaimer: Information provided is believed to be accurate as at the date of printing, no responsibility is taken for any errors or omissions. It is your responsibility to obtain independent, professional advice. Personal information collected from you is for security purposes to contact you should the property sell prior to auction. We may use this information to provide you with other real estate services including referrals to authorized financial services' providers. Visit our website at www.mwone.com.au for our privacy policy.