




MARSHALLWHITE

22 Empress Road
Surrey Hills





Picturesque Edwardian, Perfect Location

Set amongst an evocative streetscape of period homes, this captivating freestanding Edwardian residence beautifully combines the elegance of the era with light-filled modern style in a coveted pocket near Maling Road shops and restaurants, Chatham station, schools and Canterbury Sportsground.

Pressed metal ceilings and dark timber floors in the entrance hall create an inviting first impression that is continued through to a glorious sitting room also with pressed metal ceiling and an open fireplace. The generous proportions of the open plan living and dining room with a sleek gourmet Ilve kitchen boasting stone benches open out to a superbly landscaped north-facing private garden with a sail-covered entertaining terrace. Two stunning downstairs bedrooms with pressed metal ceilings, open fireplaces and built in robes and a stylish bathroom are matched upstairs by a third double bedroom with built in robe, en-suite and fourth bedroom.

Picture perfect, this appealing home also includes plantation shutters, alarm and garden shed.

22empressroad-surreyhills.com

4  2 

Auction Saturday 24th February at 10.30am

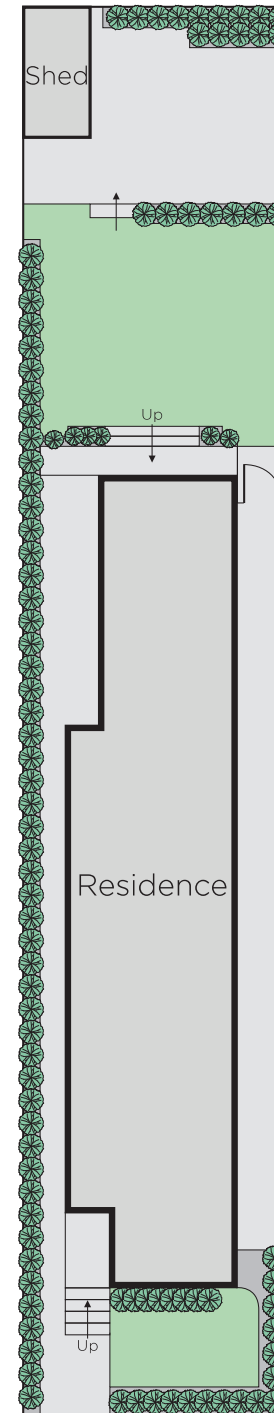
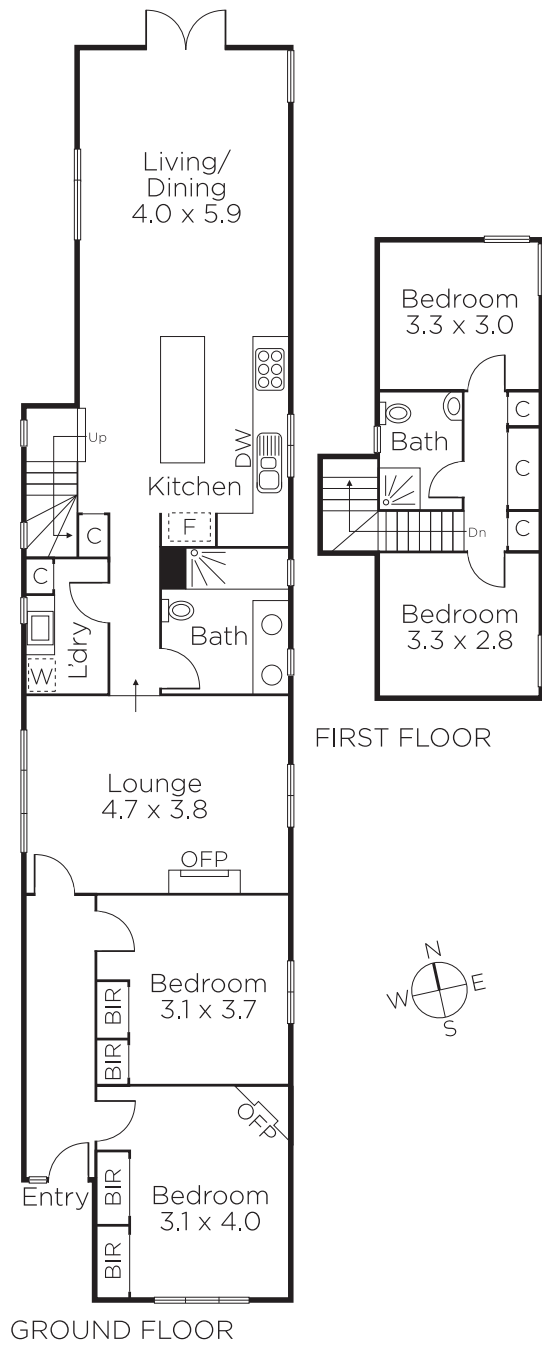
Stuart Evans
0402 067 710

Daniel Williams
0402 182 704

Duane Wolowiec
0418 567 581


MARSHALLWHITE

801 Glenferrie Road, Hawthorn



Disclaimer: Information provided is believed to be accurate as at the date of printing, no responsibility is taken for any errors or omissions. It is your responsibility to obtain independent, professional advice. Personal information collected from you is for security purposes and to contact you should the property sell prior to auction. We may use this information to provide you with other real estate services including referrals to authorised financial services' providers. Visit our website at www.marshallwhite.com.au for our privacy policy.