



MARSHALLWHITE

22 Duke Street  
Ashburton





## Style, Space, Lifestyle and Locale

Superbly located in one of Ashburton's most impressive & sought-after streets close to shops, schools, parks and transport, this c1930 Californian Bungalow on a sprawling 697sqm approx. parcel showcases warm and welcoming character, rejuvenated interiors, relaxed entertaining and beautiful tranquil environs. A superior combination of style, space and carefree living comprising four bedrooms, master with ensuite, central bath, sunken lounge, sleek Bosch kitchen, generous dining & alfresco entertaining deck. Includes RC heating & cooling, BIRs, laundry/WC, work shed & OSP.

22dukestreet-ashburton.com

4 2 2

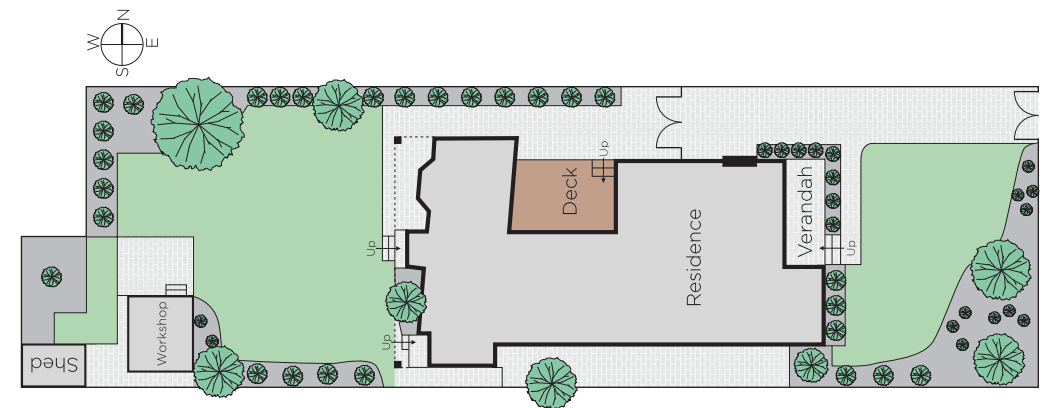
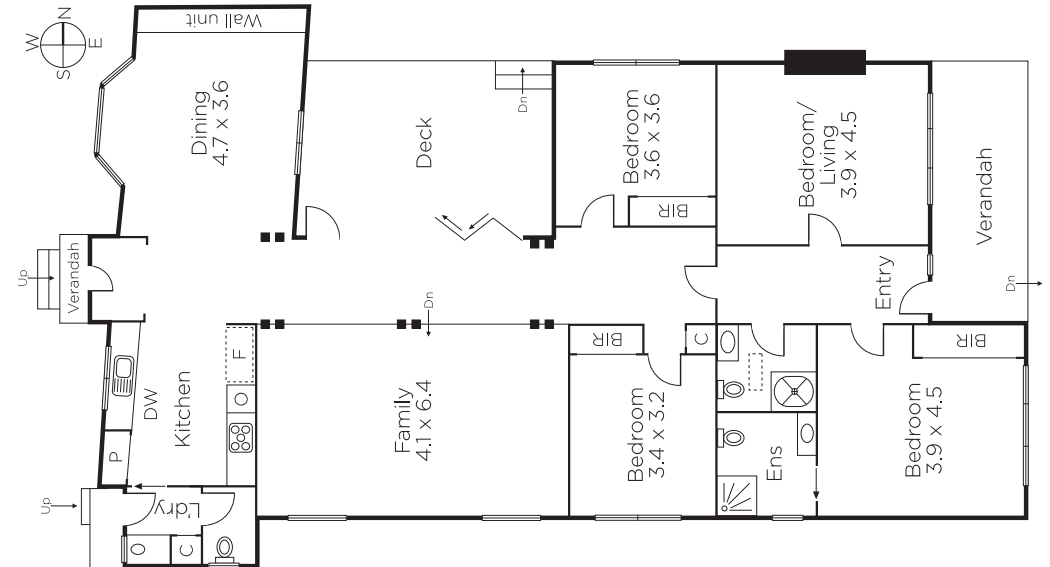
Auction Saturday 17th June at 11.30am

Todd Braggins 0424 552 238

Zali Reynolds 0422 576 049

801 Glenferrie Road Hawthorn  
marshallwhite.com.au

  
MARSHALLWHITE



Disclaimer: Information provided is believed to be accurate as at the date of printing, no responsibility is taken for any errors or omissions. It is your responsibility to obtain independent, professional advice. Personal information collected from you is for security purposes and to contact you should the property sell prior to auction. We may use this information to provide you with other real estate services including referrals to authorised financial services' providers. Visit our website at [www.marshallwhite.com.au](http://www.marshallwhite.com.au) for our privacy policy.