




MARSHALLWHITE

22 Cobden Street
South Melbourne



Superb City Edge Living

Impeccably presented and flooded with natural light throughout, this charming solid brick Victorian residence provides an idyllic single level city edge retreat walking distance to Albert Park Lake, the Domain, trams to the city and Sth Melbourne market. Overlooking a picturesque forecourt, the entrance hall introduces a superbly appointed kitchen and generous living/dining room with open fire opening to a private north-west courtyard with pedestrian access to a rear lane. Well proportioned and appointed with built in robes, the two double bedrooms share a stylish, central bathroom with laundry facilities.

22cobdenstreet-southmelbourne.com

2 1

Auction Saturday 28th April at 1.30pm

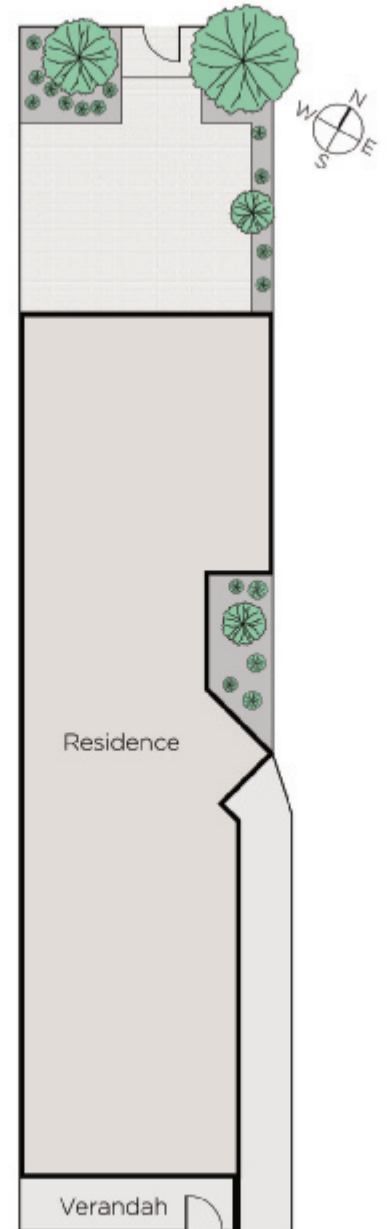
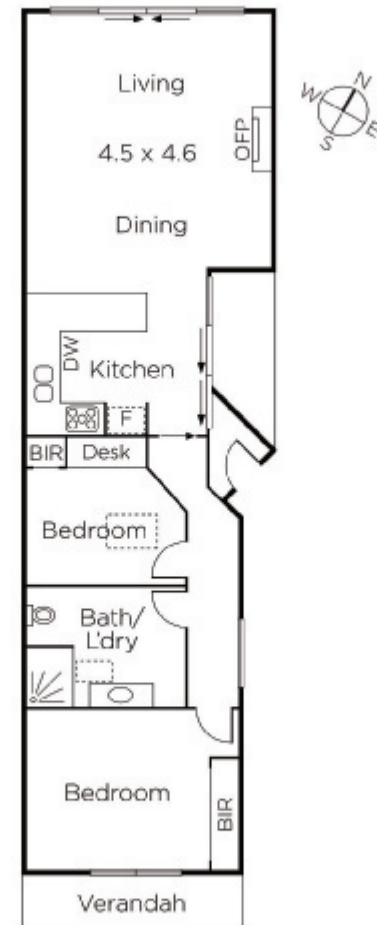
Oliver Bruce
0409 856 599

Sarah Wood
0408 902 827

Nicholas Hoo
0435 728 272


MARSHALLWHITE

101 Dundas Place, Albert Park



Disclaimer: Information provided is believed to be accurate as at the date of printing, no responsibility is taken for any errors or omissions. It is your responsibility to obtain independent, professional advice. Personal information collected from you is for security purposes and to contact you should the property sell prior to auction. We may use this information to provide you with other real estate services including referrals to authorised financial services providers. Visit our website at www.marshallwhite.com.au for our privacy policy.