



MARSHALLWHITE

22 Belson Street
Malvern East



Stunning Transformation

This beautiful tuck-point brick period family residence in the Gascoigne Estate precinct features a fully renovated and extended designer-styled interior with dark stained floors, formal sitting room with bay window, 4-bedrooms, main with WIR/ensuite, a pristine family bathroom and central laundry. An expansive family domain, designed to capitalise on northern winter sunshine, incorporates a superbly appointed kitchen with prestige Ilve and Miele appliances. Full-height French doors and a picture window overlook a private garden oasis with covered alfresco dining area and ornamental tree-lined lawn.

4 2 2

Auction Saturday 1st December at 11.30am

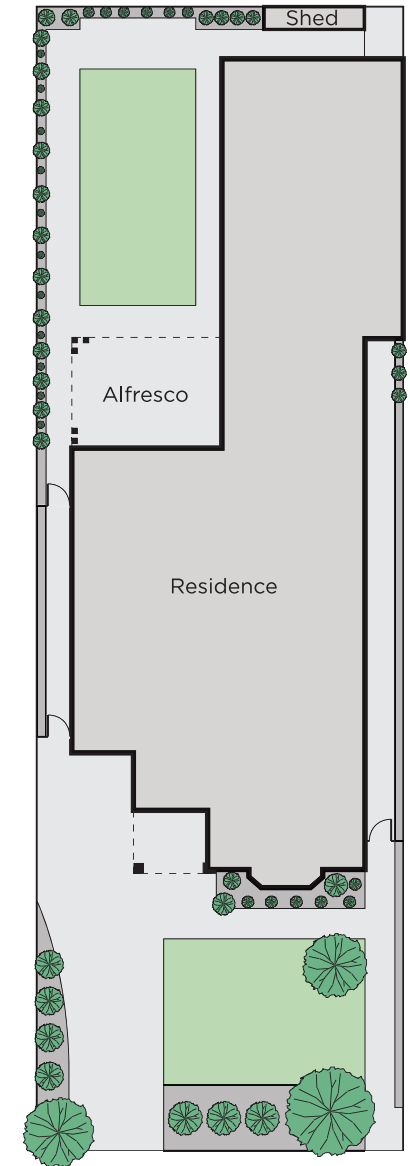
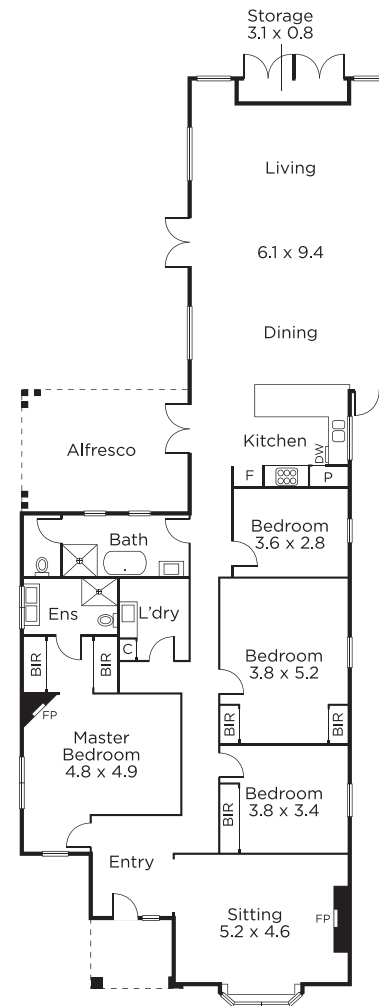
Rae Tomlinson
0418 336 234

Hamish Tostevin
0408 004 766

James Tomlinson
0408 350 684


MARSHALLWHITE

1111 High Street, Armadale



Disclaimer: Information provided is believed to be accurate as at the date of printing, no responsibility is taken for any errors or omissions. It is your responsibility to obtain independent, professional advice. Personal information collected from you is for security purposes and to contact you should the property sell prior to auction. We may use this information to provide you with other real estate services including referrals to authorised financial services providers. Visit our website at www.marshallwhite.com.au for our privacy policy.