



22

22



MARSHALLWHITE

22 Barry Street
Kew





A Coveted Studley Park Precinct Lifestyle

Offering all the appeal & styling of a late 1960s this single level contemporary brick family home boasts a beautiful canopy of mature trees flowing past its frontage. Whilst enviably located in the coveted Studley Park precinct close to Kew Junction. Privately & securely situated behind a walled courtyard garden used for entertaining the home is highlighted by high ceilings & large windows which provide garden vistas from every room. The spacious interior features a sky lit entrance hall opening to a front main bedroom with BIRs, WIR & ensuite, a study & powder room. Zoned to the rear are two further bedrooms, a family bathroom with separate WC & laundry. A formal sitting room plus dining & superbly appointed granite/timber kitchen equipped with prestige Euro appliances plus family living/dining all overlook a lush northern sun-drenched garden with water features; providing a tranquil oasis for indoor/outdoor dining & entertaining. Other features include intercom entry, alarm, R/C air conditioner (living & back bedrooms), ample storage, 5,000ltr rain water tanks, 3.2 KWh solar panels and remote double garage with secure access through the front courtyard. Land size: 575sqm (approx.)

4  2  2 

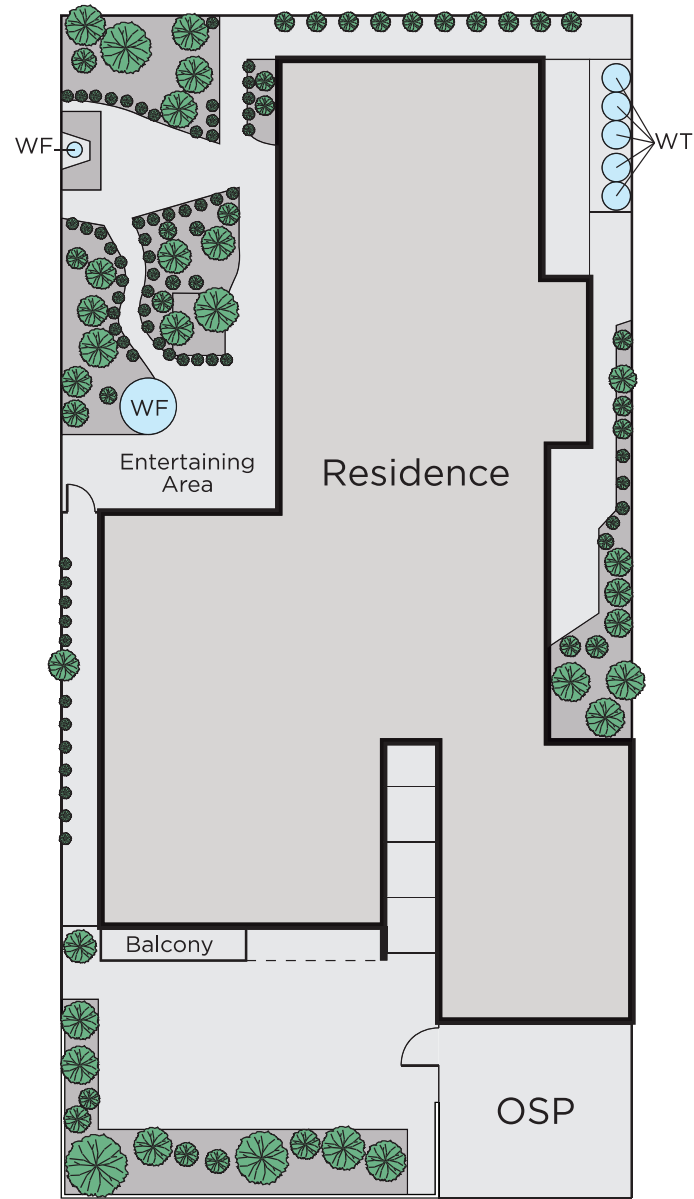
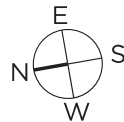
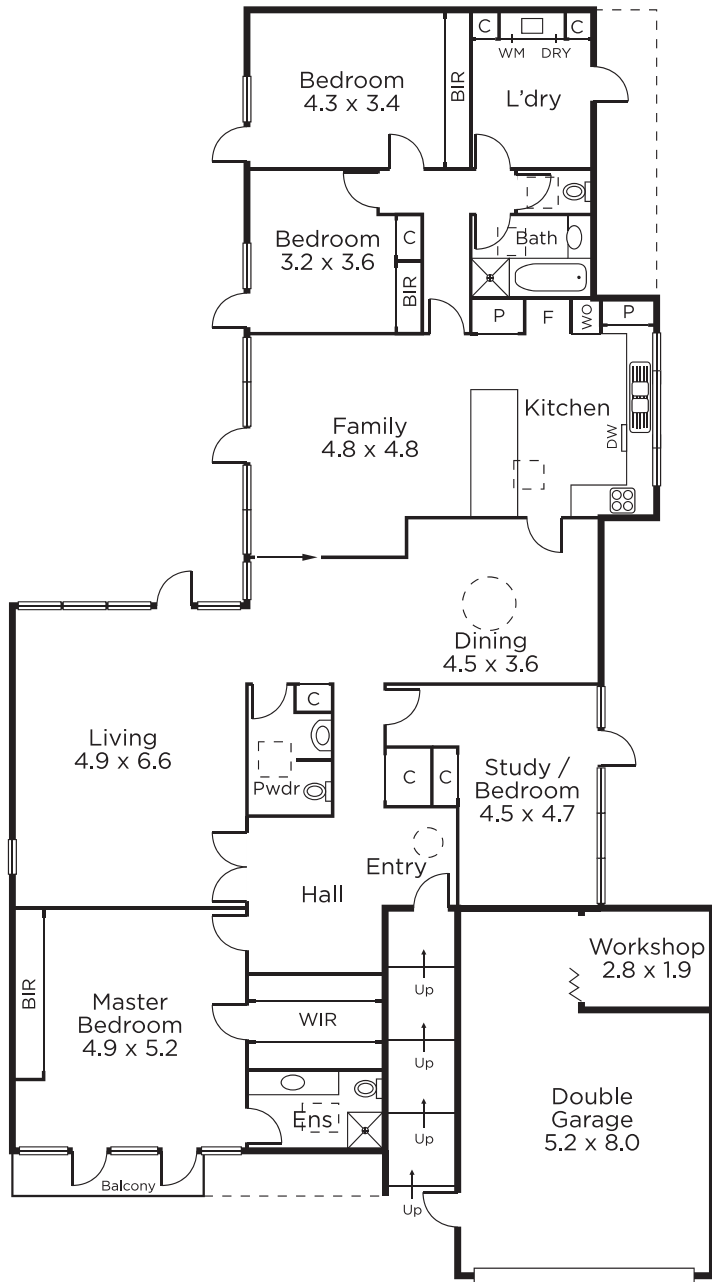
Auction Saturday 16th February at 10.30am

Davide Lettieri
0414 018 707

Andrew Gibbons
0407 577 007


MARSHALLWHITE

801 Glenferrie Road, Hawthorn



Disclaimer: Information provided is believed to be accurate as at the date of printing, no responsibility is taken for any errors or omissions. It is your responsibility to obtain independent, professional advice. Personal information collected from you is for security purposes and to contact you should the property sell prior to auction. We may use this information to provide you with other real estate services including referrals to authorised financial services' providers. Visit our website at www.marshallwhite.com.au for our privacy policy.