



MARSHALLWHITE  
ONE

2/18-20 St Georges Road  
Armadale



## Sleek Renovation, Moments from High Street

This secure, two bedroom, ground-floor apartment has been comprehensively renovated to present a pristine, nothing-to-do, lifestyle home, or investment, just moments from High St Armadale. Securely accessed via intercom entry, with a parking space right at your front door, the home highlights Bosch appliances, stone benches and plenty of soft close cabinetry, the kitchen is semi-attached to a large lounge / dining with a balcony, whilst the bathroom / laundry has been fully-tiled and is immaculate. Also features attractive blonde timber-toned flooring, substantial mirrored robes and a refreshing attention to detail. This quiet street allows you to wander to fine cafes, restaurants and boutique shopping, whilst Armadale Railway Station is within easy reach, city-bound trams can be found on both High St and Wattleree Rd, plus you have beautiful local parks and Malvern Central Shopping Centre just around the corner.

2-18-20stgeorgesroad-armadale.com

2 1 1

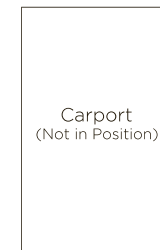
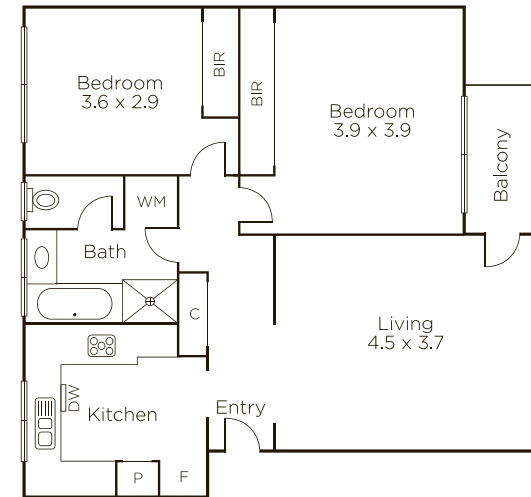
Auction Saturday 25th May at 12noon

Tom Hayne 0429 149 070

Joseph Ben-Danan 0408 135 948

1111 High Street Armadale

9822 9999 mwone.com.au



  
MARSHALLWHITE  
ONE

Disclaimer: Information provided is believed to be accurate as at the date of printing, no responsibility is taken for any errors or omissions. It is your responsibility to obtain independent, professional advice. Personal information collected from you is for security purposes to contact you should the property sell prior to auction. We may use this information to provide you with other real estate services including referrals to authorized financial services providers. Visit our website at [www.mwone.com.au](http://www.mwone.com.au) for our privacy policy.