




MARSHALLWHITE

2/17 Marshall Avenue
Kew





Bench Marking High Quality Single Level Living

Enjoying a street frontage beside the Silver Birch lined entrance to a leafy mews-style development, this attractive single level town residence is enhanced by a pretty, low maintenance front garden introducing a superbly appointed interior bench marking a quality offering; which will attract retirees scaling down without compromise or young professionals and families seeking a home in a superior lifestyle location close to numerous Kew and Balwyn shopping restaurant and café amenities, prestige schools and transport.

The elegant interior features a soft neutral décor with an entrance hall opening to a sitting room with gasFP and adjacent dining room; plus three bedrooms or two and a study, front main with bay window, WIR and ensuite, pristine family bathroom and powder room. A north-facing family living and dining area includes a laundry, stylishly appointed granite and AEG equipped kitchen flowing to a private, sun-drenched terrace and garden access. Other features include intercom, alarm, ducted heating, cooling and vacuum, sprinkler system plus a remote double garage/storage with secure internal entry.

2-17marshallavenue-kew.com

3  2  2 

Auction Saturday 16th September at 1.30pm

Stuart Evans 0402 067 710

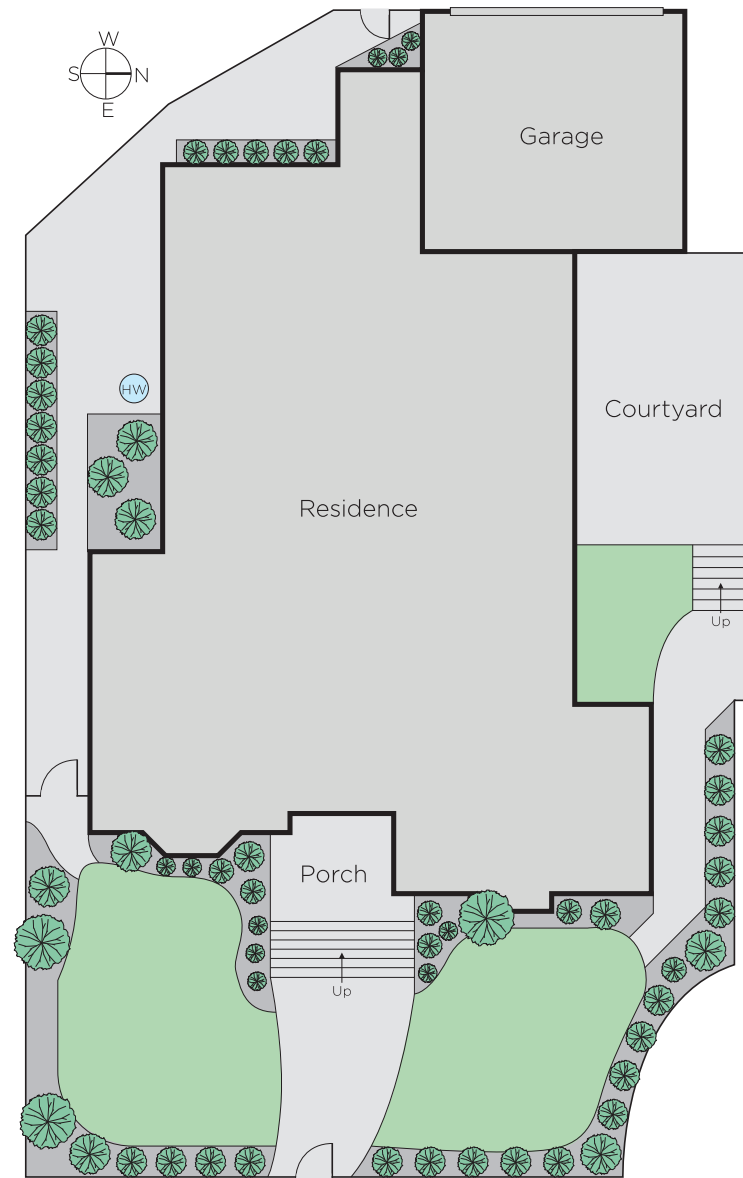
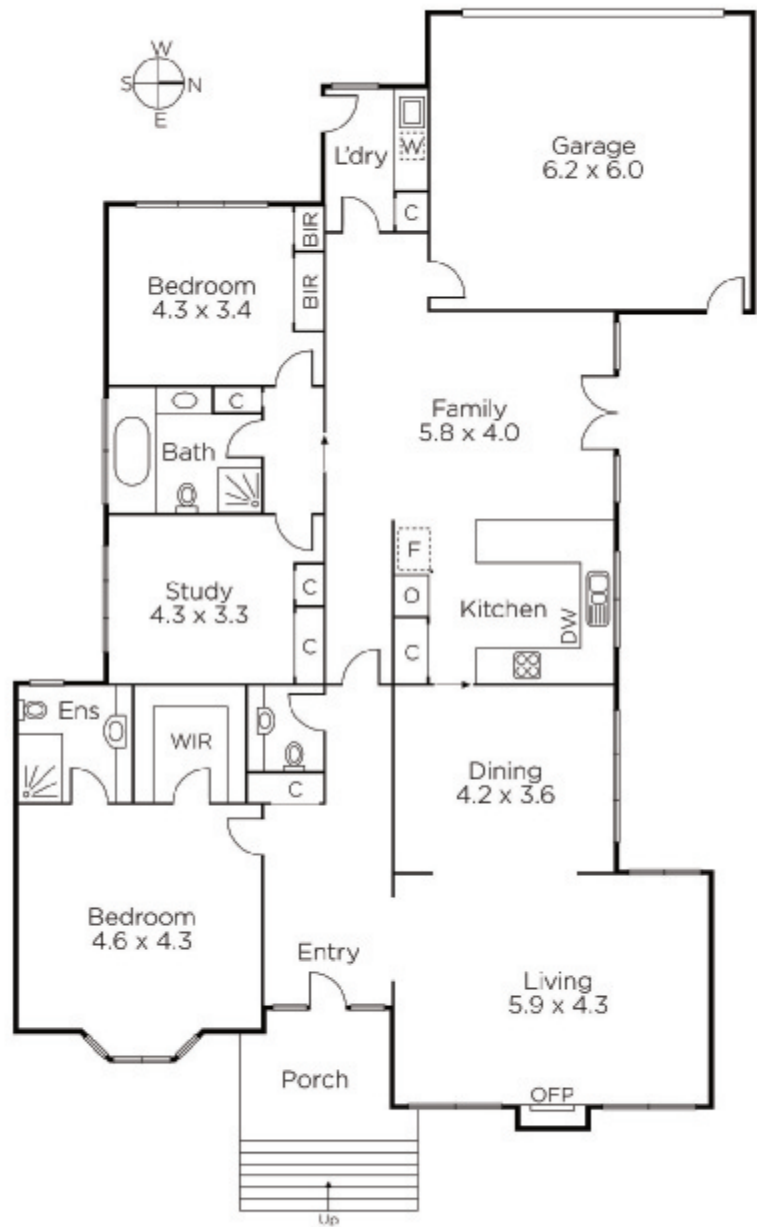
Grayson Rayner 0433 654 744

Duane Wolowiec 0418 567 581

801 Glenferrie Road Hawthorn

marshallwhite.com.au


MARSHALLWHITE



Disclaimer: Information provided is believed to be accurate as at the date of printing, no responsibility is taken for any errors or omissions. It is your responsibility to obtain independent, professional advice. Personal information collected from you is for security purposes and to contact you should the property sell prior to auction. We may use this information to provide you with other real estate services including referrals to authorised financial services' providers. Visit our website at www.marshallwhite.com.au for our privacy policy.