




MARSHALLWHITE
ONE

2/14 Shelley Street
Elwood



Alluring Art Deco Appeal

This undeniably stylish, two bedroom, Art Deco apartment combines its exquisite original character with a lofty sense of grandeur and a compelling opportunity to transform it into an urban classic of the 21st Century. Instantly engaging, in the boutique 'Velona' building, the home immediately combines the warmth of timber windows, door frames and flooring with towering ceilings and ornate detail as it allows you to discover the joy of a central and kitchen where an easy over-the-counter flow to a meals / living area is balanced with connection to north-facing outdoor living. Each of the bedrooms is large enough for a desk and fully equipped with built-in robes, while the bathroom has been renovated and a lock-up garage is a rare treat. Just metres from all the cafes, bars and restaurants that make Ormond Rd a destination, whilst the waterfront is just moments away, buses are easily accessed and city-bound trams can be found with minimal fuss.

2-14shelleystreet-elwood.com

2 1 1

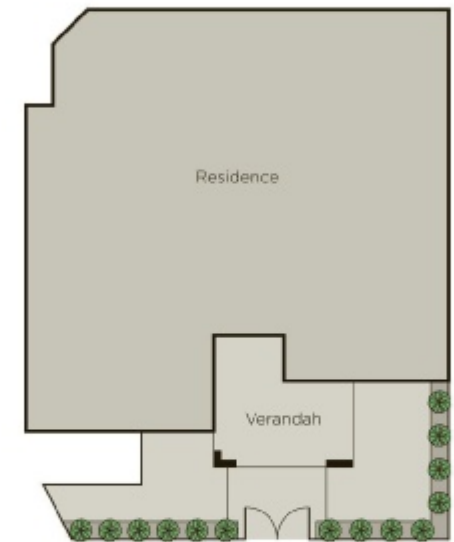
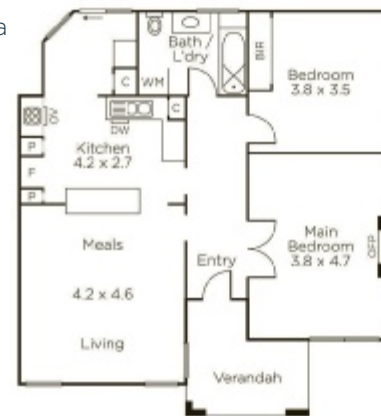
Auction Saturday 5th October at 11.30am

Bradley Steinbach 0403 539 038

Matthew Grima 0403 438 601

101 Dundas Place Albert Park

9822 9999 mwone.com.au




MARSHALLWHITE
ONE

Disclaimer: Information provided is believed to be accurate as at the date of printing, no responsibility is taken for any errors or omissions. It is your responsibility to obtain independent, professional advice. Personal information collected from you is for security purposes to contact you should the property sell prior to auction. We may use this information to provide you with other real estate services including referrals to authorized financial services' providers. Visit our website at www.mwone.com.au for our privacy policy.