



136



MARSHALLWHITE
ONE

2/136 Church Street
Hawthorn



Impressive, State-of-the-Art, AI fresco Living

Offering unparalleled lifestyle and investment credentials, this visually impressive, as new, two bedroom apartment is distinguished by a light-loving northern orientation and a huge paved courtyard. With Blanco appliances, premium cabinetry and stone bench tops, the open-plan kitchen/meals/living flows seamlessly through floor-to-ceiling windows to a huge and superb paved courtyard. In the master bedroom, an ensuite introduces a taste of luxury, whilst both bedrooms have mirrored robes and the central bathroom is divine, plus there is a clever European laundry. Highly secure with video entry, the home also offers basement parking, a bicycle room and a storage cage. Within five kilometres of the city and with a tram at your doorstep, the CBD, Bridge Rd and Kew Junction are all wonderfully convenient, whilst you are just metres from the Yarra River with its endless meandering trails and parkland as well.

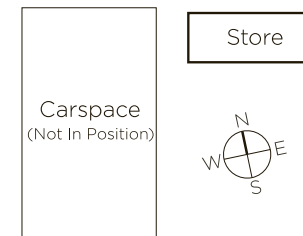
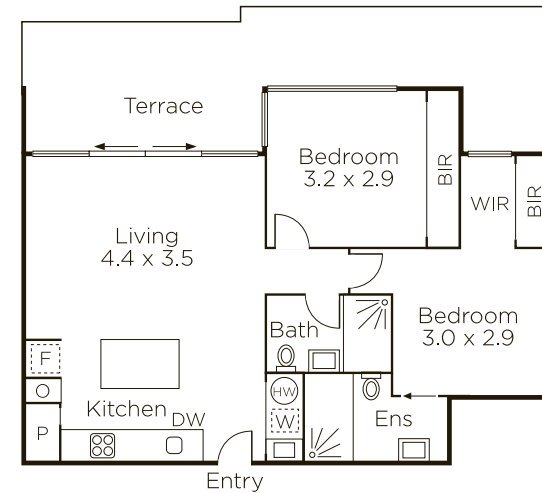
2-136churchstreet-hawthorn.com

2 2 1

Private Sale

Bethany Wilkinson 0449 285 813
Liam Adey 0432 660 711

801 Glenferrie Road Hawthorn
9822 9999 mwone.com.au



MARSHALLWHITE
ONE

Disclaimer: Information provided is believed to be accurate as at the date of printing, no responsibility is taken for any errors or omissions. It is your responsibility to obtain independent, professional advice. Personal information collected from you is for security purposes to contact you should the property sell prior to auction. We may use this information to provide you with other real estate services including referrals to authorized financial services providers. Visit our website at www.mwone.com.au for our privacy policy.