




MARSHALLWHITE

21 George Street
Ashwood





Captivating Mid Century Charm

A pristine example of mid-century architecture, this impressively refurbished single level residence displays a compelling blend of original elegance and contemporary style through superbly spacious and well zoned family dimensions.

A stylish solid brick façade reveals original timber floors and high ceilings in the wide entrance hall and generously proportioned formal sitting and dining room with an open fireplace. The well appointed modern kitchen, casual dining room and an inviting separate living room warmed by a wood fire heater open to the deep private north-facing attractively planted garden with covered deck and rustic al fresco area with a stone open fireplace. Versatile accommodation comprises three double bedrooms with built in robes, a 4th bedroom or study and two stylish bathrooms.

Close to Ashburton Village and station, schools and parks, it also includes an alarm, ducted heating, laundry, irrigation, triple garage and double carport. Land size: 783sqm (approx.)

21georgestreet-ashwood.com

4  2  3 

Auction Saturday 28th October at 11.30am

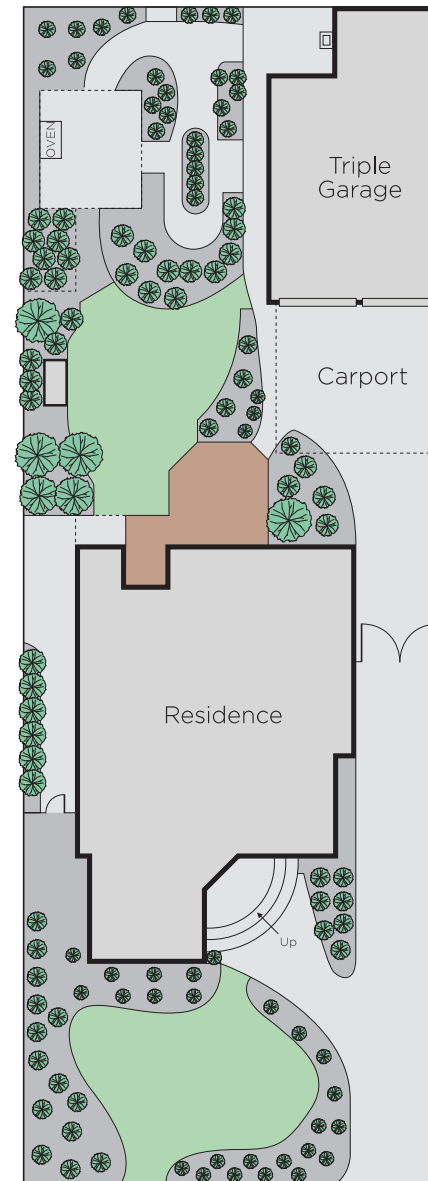
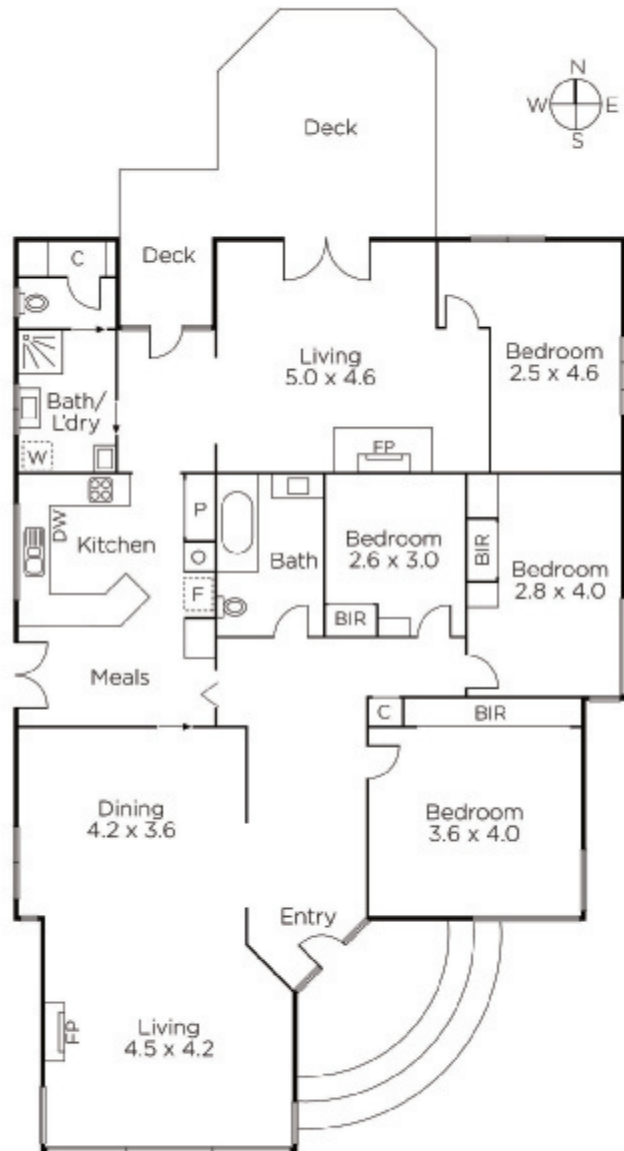
Zali Reynolds 0422 576 049

Mark Sproule 0408 090 205

801 Glenferrie Road Hawthorn

marshallwhite.com.au


MARSHALLWHITE



Disclaimer: Information provided is believed to be accurate as at the date of printing, no responsibility is taken for any errors or omissions. It is your responsibility to obtain independent, professional advice. Personal information collected from you is for security purposes and to contact you should the property sell prior to auction. We may use this information to provide you with other real estate services including referrals to authorised financial services' providers. Visit our website at www.marshallwhite.com.au for our privacy policy.