



MARSHALLWHITE

21 Cheeseman Avenue
Brighton East



Renovated with Quality and Care

Art Deco origins are at the heart of this renovated and extended home, and contemporary spaciousness makes it a natural choice for family living. The blend of old and new has created two living zones, four bedrooms, and today's design elements. North-facing family room, deck and garden are tailor-made for relaxing, and the lounge and dining rooms match original features with plantation shutters and timber floors. Love this home for its Smeg and granite kitchen, zoned main bedroom with ensuite, and family-size garden space. Sought-after heritage-listed street in Gardenvale Primary School zone, near trams and shops.

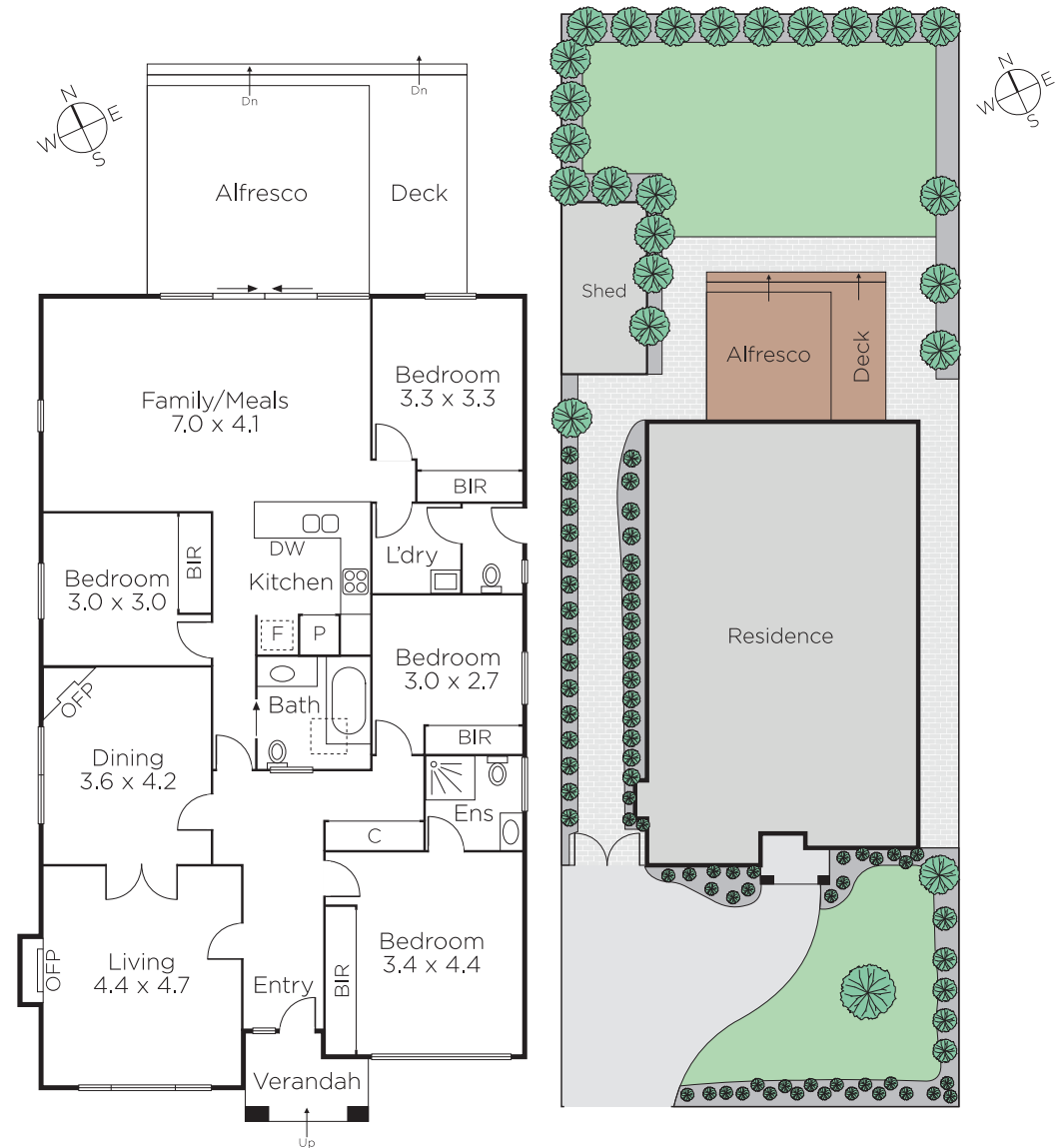
21cheesemanavenue-brightoneast.com

4 2 2

Auction Saturday 3rd March at 12.30pm

Robin Parker
0409 336 282

Kate Fowler
0418 418 385




MARSHALLWHITE

225 Bay Street, Brighton

Disclaimer: Information provided is believed to be accurate as at the date of printing, no responsibility is taken for any errors or omissions. It is your responsibility to obtain independent, professional advice. Personal information collected from you is for security purposes and to contact you should the property sell prior to auction. We may use this information to provide you with other real estate services including referrals to authorised financial services providers. Visit our website at www.marshallwhite.com.au for our privacy policy.