




MARSHALLWHITE

21 Belgravia Avenue
Mont Albert North



Expansive Dimensions, Exceptional Potential

Magnificently set behind an exceptionally broad frontage on the high side of the street, this classic 1960's solid brick residence represents an outstanding opportunity to renovate or as a sensational new home or dual development site (STCA). Enjoying a preferred northwest orientation, original charm defines the generous sitting and formal dining rooms, three spacious bedrooms (robes), study and bright bathroom. The large pristine kitchen with casual dining area opens to the deep northwest garden. Enviably situated near Balwyn East Village, Koonung Creek Reserve, schools, transport and freeway access.

21belgraviaavenue-montalbertnorth.com

3 1 2

Auction Saturday 21st October at 2.30pm

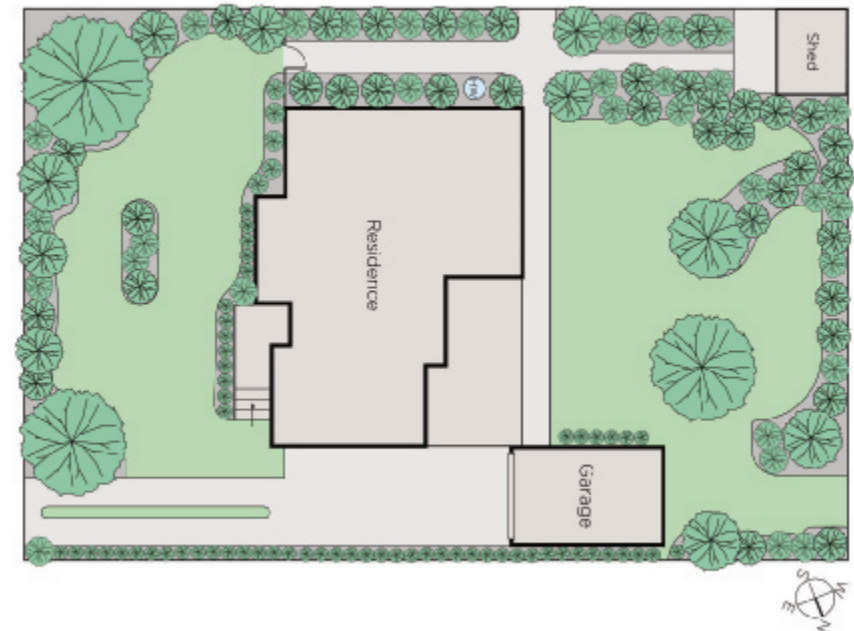
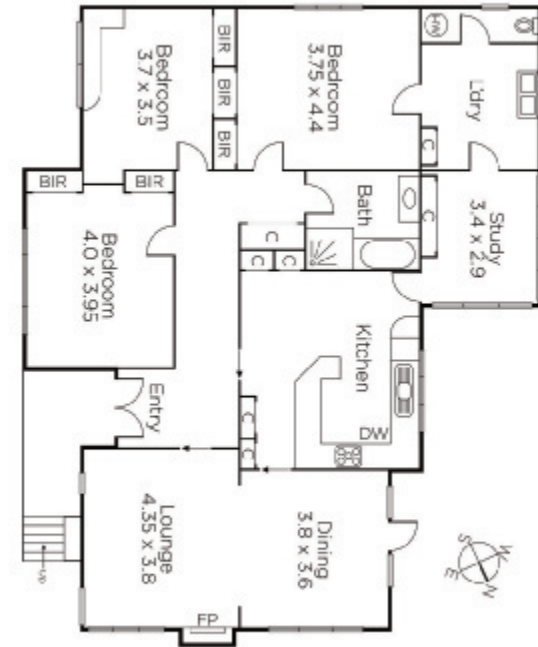
Grayson Rayner 0433 654 744

Daniel Williams 0402 182 704

Sophie Su 0425 270 125

801 Glenferrie Road Hawthorn
marshallwhite.com.au


MARSHALLWHITE



Disclaimer: Information provided is believed to be accurate as at the date of printing, no responsibility is taken for any errors or omissions. It is your responsibility to obtain independent, professional advice. Personal information collected from you is for security purposes and to contact you should the property sell prior to auction. We may use this information to provide you with other real estate services including referrals to authorised financial services' providers. Visit our website at www.marshallwhite.com.au for our privacy policy.