



MARSHALLWHITE

21 Barloa Road
Mont Albert



Loaded with Possibilities

Perfectly positioned for young families to enjoy - this attractive timber period home is full of promise to take the spacious interior to the next level capitalising on the previously renovated/extended accommodation. Gracing a large garden allotment it features art deco ceilings, polished timber hallway, sitting room, separate dining, 4-zoned bedrooms and two black & white bathrooms. Complemented by two living areas, one incorporating a stylish granite/Euro S/S kitchen plus adjacent laundry opening to a central deck overlooking a deep rear garden. Incls. d/heating, R/C air conditioner & OSP.

21barloaroad-montalbert.com

5 2 2

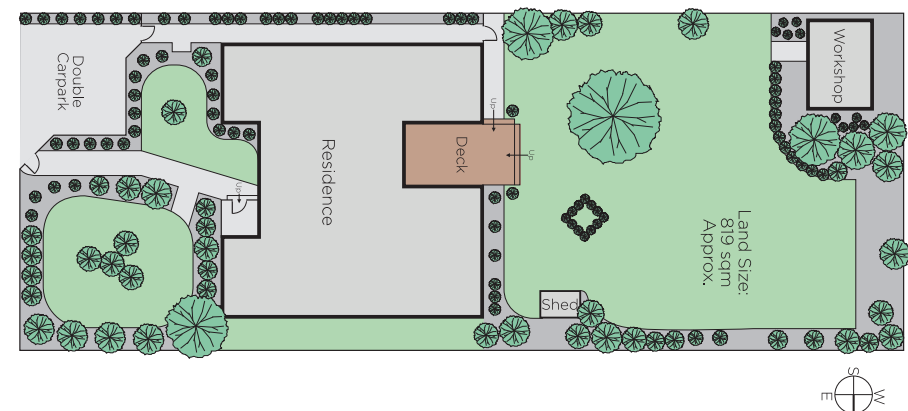
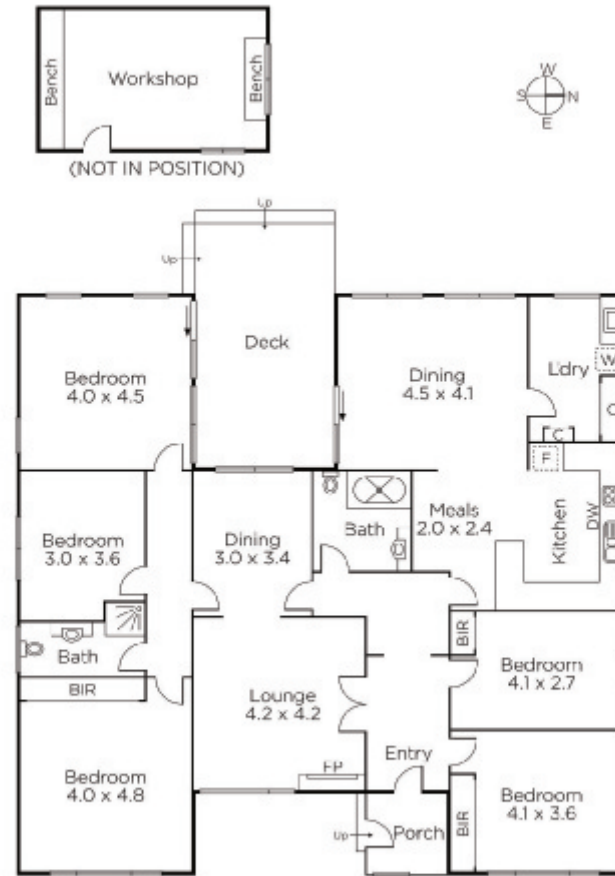
Auction Saturday 1st July at 3.30pm

Andrew Gibbons 0407 577 007

Davide Lettieri 0414 018 707

801 Glenferrie Road Hawthorn
marshallwhite.com.au


MARSHALLWHITE



Disclaimer: Information provided is believed to be accurate as at the date of printing, no responsibility is taken for any errors or omissions. It is your responsibility to obtain independent, professional advice. Personal information collected from you is for security purposes and to contact you should the property sell prior to auction. We may use this information to provide you with other real estate services including referrals to authorised financial services' providers. Visit our website at www.marshallwhite.com.au for our privacy policy.