




MARSHALLWHITE

21 Balwyn Road
Canterbury





Evocative Elegance, Enticing Style

Enviably situated close to Maling Rd Village, Canterbury station and Gardens and a range of schools, this charismatic brick c1926 four bedroom family residence's light-filled dimensions are defined by an alluring blend of period elegance and inviting contemporary style.

Set on 736sqm (approx.) with private northwest garden and pool surrounds, the sun-drenched ambience of the interior spaces are accentuated by pale timber floors through the wide hall, glorious living room with open fireplace, formal dining room and retreat or TV room. The sleek gourmet kitchen featuring stone benches and adjacent family dining area lead out to a fabulous covered alfresco dining deck overlooking the deep private northwest garden with solar heated pool and sun-deck. Conveniently situated on the ground level, the main bedroom is appointed with built in robe and chic en-suite while the three additional bedrooms and stylish bathroom are upstairs.

This picture perfect home also includes an alarm, powder-room, laundry, garden shed, double carport and additional off street car spaces.

21balwynroad-canterbury.com

4  2  2 

Auction Saturday 28th October at 10.30am

Nicholas Franzmann 0412 247 175

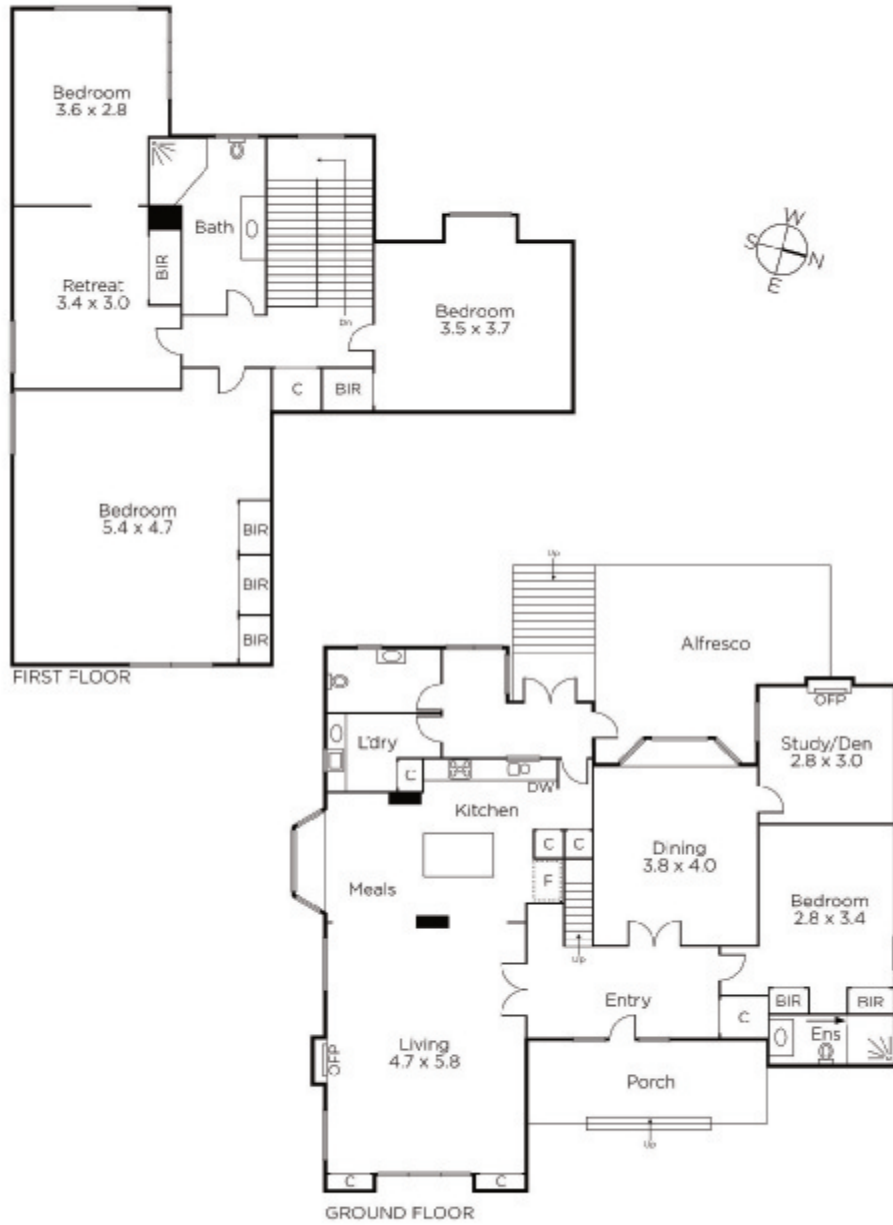
Hsiu Chen 0403 187 386

Mark Sproule 0408 090 205

801 Glenferrie Road Hawthorn

marshallwhite.com.au


MARSHALLWHITE



Disclaimer: Information provided is believed to be accurate as at the date of printing, no responsibility is taken for any errors or omissions. It is your responsibility to obtain independent, professional advice. Personal information collected from you is for security purposes and to contact you should the property sell prior to auction. We may use this information to provide you with other real estate services including referrals to authorised financial services' providers. Visit our website at www.marshallwhite.com.au for our privacy policy.