



MARSHALLWHITE
ONE

20/995 Burke Road
Hawthorn East



'Burke Heights': A Pristine Hideaway

Well-removed from the street and surrounded by trees, this renovated, two bedroom, ground-floor apartment is a wonderful surprise at the rear of this lush garden and is suited to first home buyers and investors. Freshly painted with attractive timber tone flooring, the home features a pristine kitchen/meals and a large north-facing lounge/dining with a balcony. Also offering a large sparkling bathroom/laundry with an independent bath and shower, a separate WC, robes in each of the substantial bedrooms and the highly-coveted prize of parking, all within a lush garden setting. With trams at your doorstep, buses nearby and Camberwell Railway Station comfortably walkable, the home is well-served by transport, whilst the selection of local cafes, restaurants, bars, strip shopping and cinemas are all among Melbourne's finest.

20-995burkeroad-hawthorneast.com



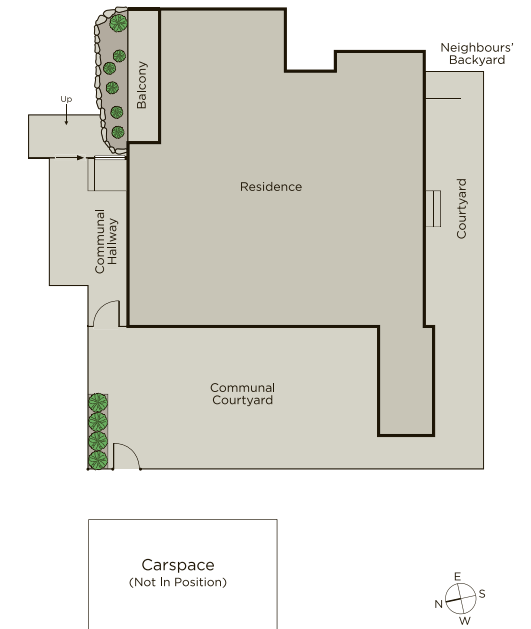
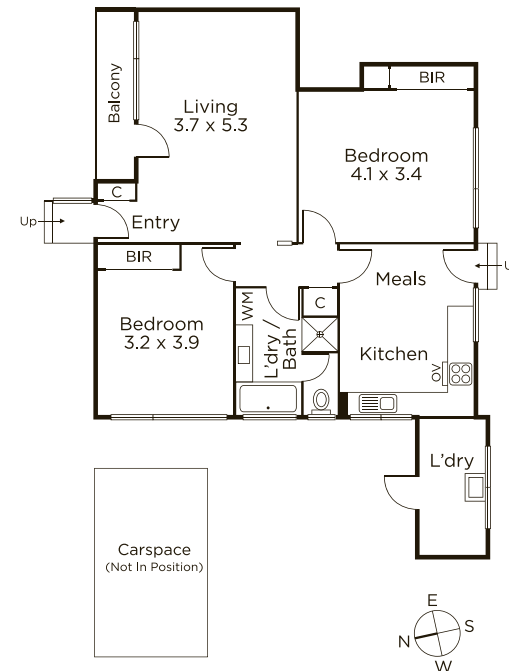
Auction Saturday 23rd February at 3pm

Ash Sachdev 0402 425 661

James Hill 0402 421 154

801 Glenferrie Road Hawthorn

9822 9999 mwone.com.au



Disclaimer: Information provided is believed to be accurate as at the date of printing, no responsibility is taken for any errors or omissions. It is your responsibility to obtain independent, professional advice. Personal information collected from you is for security purposes to contact you should the property sell prior to auction. We may use this information to provide you with other real estate services including referrals to authorized financial services' providers. Visit our website at www.mwone.com.au for our privacy policy.