



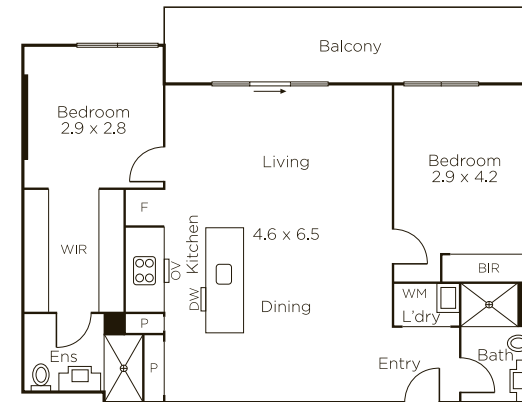
  
MARSHALLWHITE  
ONE

209/101 Bay Street  
Port Melbourne



## A Superior Bay St Lifestyle Experience

This sleek and contemporary, two bedroom apartment is highly secure, maintenance-free and eye-catchingly stylish in the '101 Bay' building. Immediately discover the pleasure of an open and relaxed floorplan, in which stone waterfall kitchen benches combine with Miele appliances, glass splash backs and premium soft close cabinetry to draw the eye and captivate, while an easy flow outdoors to a broad balcony delivers a wonderful sunny place to enjoy breakfast. Also features an impressively sized master bedroom with an ensuite and walk-through robes, secure video entry, basement parking, elevator access, a European laundry and split system heating / cooling. Bay St's thriving street culture, cafe scene and great bars will all be at your doorstep, whilst the waterfront and its endless walking and running trails are just metres away, the city can be accessed in a handful of minutes, as can the Arts Precinct and South Melbourne Market.



<http://www.209-101baystreet-portmelbourne.com> 2 2 1

Auction Saturday 23rd November at 3pm

Matthew Grima 0403 438 601

Bradley Steinbach 0403 539 038

Matt Pillios 0408 145 982

101 Dundas Place Albert Park

9822 9999 [mwone.com.au](http://mwone.com.au)

MARSHALLWHITE  
ONE

Internal Area: 70sqm (approx.)

Balcony Area: 12sqm (approx.)

Disclaimer: Information provided is believed to be accurate as at the date of printing, no responsibility is taken for any errors or omissions. It is your responsibility to obtain independent, professional advice. Personal information collected from you is for security purposes to contact you should the property sell prior to auction. We may use this information to provide you with other real estate services including referrals to authorized financial services providers. Visit our website at [www.mwone.com.au](http://www.mwone.com.au) for our privacy policy.