



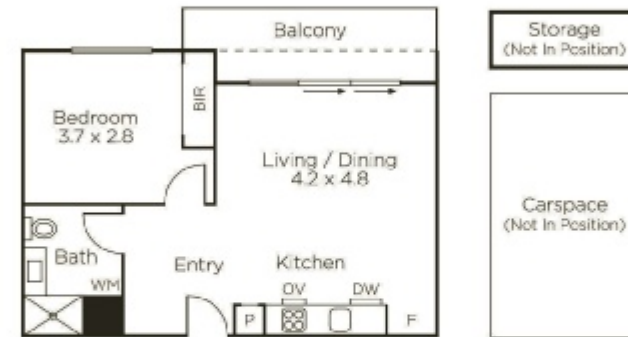
MARSHALLWHITE
ONE

207/17 Riversdale Road
Hawthorn



Size, Style and Substance

Set within the quality-rich and visually striking 'One/Seven Riversdale' building, this impressively-sized, timelessly stylish and maintenance-free, single bedroom apartment is a home that will stand the test of time. The kitchen/meals/living is wonderfully flexible with a mobile, stone-topped island bench and plenty of premium soft close cabinetry, while a suite of Miele appliances compliments mirrored splash backs and the al fresco flow is most alluring. The bathroom is particularly vogue, themed to the kitchen, with laundry facilities, whilst the bedroom is equipped with well-designed built-in robes. Fully secure with basement parking, video entry, elevator access and a storage cage. Positioned to enjoy tranquil riverside walks, the café scene of Glenferrie Rd, great restaurants and the bars of Richmond, all of which have the potential to become your new local haunts, whilst the Riversdale Rd tram is a gateway to the CBD.



Auction Saturday 7th December at 11.30am

Samantha Paterson 0417 137 721

801 Glenferrie Road Hawthorn

Kane Penhalluriack 0406 556 445

9822 9999 mwone.com.au



Disclaimer: Information provided is believed to be accurate as at the date of printing, no responsibility is taken for any errors or omissions. It is your responsibility to obtain independent, professional advice. Personal information collected from you is for security purposes to contact you should the property sell prior to auction. We may use this information to provide you with other real estate services including referrals to authorized financial services' providers. Visit our website at www.mwone.com.au for our privacy policy.