



MARSHALLWHITE
ONE

203/1121 Toorak Road
Camberwell



Vogue Urban Living

Quietly removed from the road and accessed via George St, this sleek and modern, one bedroom apartment is a compelling lifestyle proposition that represents a wonderful, maintenance-free, entry to the market or an astute investment. Stone kitchen benches, stainless steel appliances and mirrored splash backs form an impressive combination as the kitchen/living spills outdoors to a sunny, north-facing balcony which feels like a sanctuary. In the bedroom, built-in-robos offer excellent storage, whilst the home also features basement parking, a large storage cage and intercom entry. The local cafes and restaurants present a terrific selection of culinary delights, whilst there is a tram stop just metres away, Hartwell Train Station just around the corner and the full diversity of amenities available at Camberwell Junction which is also just a few minutes away.

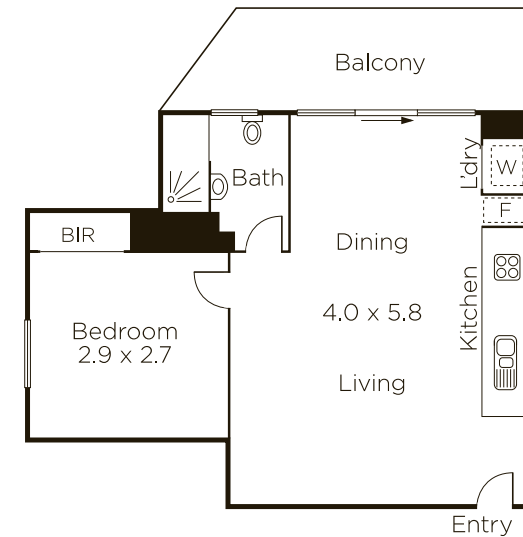
203-1121toorakroad-camberwell.com

1 1 1

Private Sale

Ash Sachdev 0402 425 661
Oliver Tarrant 0499 555 744

801 Glenferrie Road Hawthorn
9822 9999 mwone.com.au



Store



Carspace
(Not In Position)

MARSHALLWHITE
ONE

Disclaimer: Information provided is believed to be accurate as at the date of printing, no responsibility is taken for any errors or omissions. It is your responsibility to obtain independent, professional advice. Personal information collected from you is for security purposes to contact you should the property sell prior to auction. We may use this information to provide you with other real estate services including referrals to authorized financial services providers. Visit our website at www.mwone.com.au for our privacy policy.