



MARSHALLWHITE
ONE

202/92 Hawthorn Road
Caulfield North



Parkside Prestige with Superb Views

Distinguished by its beautiful views across Caulfield Park and by its luxuriously spacious dimensions, this striking, as new, two bedroom apartment is a perfectly positioned and fully secure expression of contemporary designer excellence. A Miele-equipped kitchen compliments marble waterfall benches and soft-close cabinetry as it opens through double glass sliding doors to a huge balcony that has been conceived with the entertainer in mind. Wonderfully secure with two sets of video entry and basement parking, the home is accessed via elevator and features a fully-tiled designer ensuite and main bathroom, as well as robes in each bedroom, a clever alcove study, central heating, cooling and basement storage. Metres from the Balaclava Rd intersection, you can take trams to the north, the south, the east or the west, whilst the local cafes and restaurants are first class and Glenferrie Rd shopping is moments away.

202-92hawthornroad-caulfieldnorth.com 2 2 2

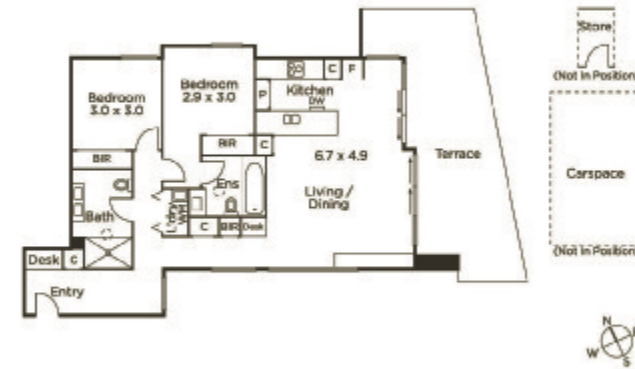
Auction Saturday 23rd February at 12pm

Joseph Ben-Danan 0408 135 948

Tom Hayne 0429 149 070

1111 High Street Armadale

9822 9999 mwone.com.au




MARSHALLWHITE
ONE

Disclaimer: Information provided is believed to be accurate as at the date of printing, no responsibility is taken for any errors or omissions. It is your responsibility to obtain independent, professional advice. Personal information collected from you is for security purposes to contact you should the property sell prior to auction. We may use this information to provide you with other real estate services including referrals to authorized financial services providers. Visit our website at www.mwone.com.au for our privacy policy.