



MARSHALLWHITE

202/4 Cromwell Road
South Yarra



Unbeatable Style and Lifestyle

Stylish, serene and secure, this stunning boutique apartment delivers idyllic lock up and leave lifestyle appeal in a highly sought after location near Hawksburn Village, Prahran Market, Chapel Street's restaurant and retail precinct and Hawksburn station. Northern light streams through the generous living/dining room featuring a gourmet kitchen and large north-facing balcony. A light-filled main bedroom with walk in robe and lavish en-suite is matched by a second double bedroom with built in robe and designer bathroom. Includes lift access, video intercom, double glazing, Euro-laundry, store room and one car space.

202-4cromwellroad-southyarra.com

2 2 1

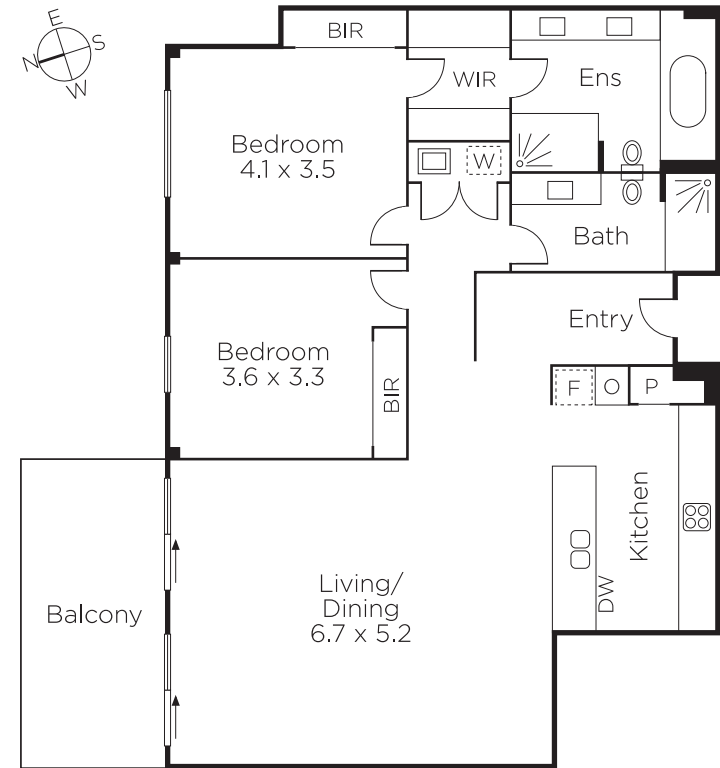
Auction Saturday 26th May at 10.30am

James McCormack
0410 503 389

Dean Gilbert
0418 994 939


MARSHALLWHITE

1111 High Street, Armadale



Disclaimer: Information provided is believed to be accurate as at the date of printing, no responsibility is taken for any errors or omissions. It is your responsibility to obtain independent, professional advice. Personal information collected from you is for security purposes and to contact you should the property sell prior to auction. We may use this information to provide you with other real estate services including referrals to authorised financial services providers. Visit our website at www.marshallwhite.com.au for our privacy policy.