



  
MARSHALLWHITE

201 Ashworth Street  
Middle Park



## Warehouse Style, Beach Lifestyle

With the beach only metres from your front door, this warehouse inspired contemporary residence's superbly proportioned, impeccably stylish and light-filled dimensions provide irresistible lifestyle appeal.

Lofty ceilings, wide oak floors and floor to ceiling glass define the expansive living/dining spaces (electric fire) and gourmet stone kitchen opening to a private north BBQ courtyard. Two generous bedrooms with built in robes are accompanied by a fitted separate study/3rd bedroom and designer bathroom. Walking distance to Middle Park Village, schools, trams and Albert Park Lake, it includes alarm, security intercom, powder-room and Euro-laundry.

201ashworthstreet-middlepark.com

3 1

Auction Saturday 8th July at 12.30pm

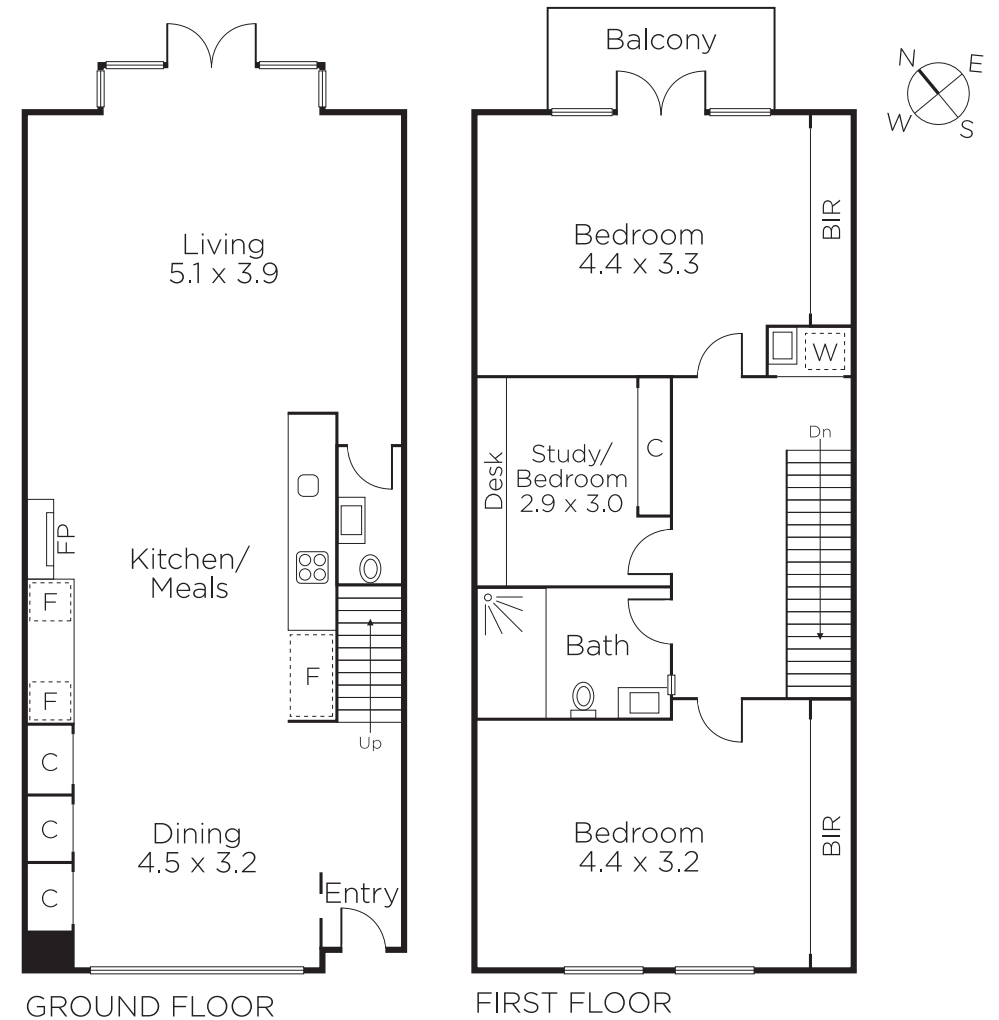
Justin Holod 0411 669 161

Nicholas Beks 0417 511 548

Oliver Bruce 0409 856 599

101 Dundas Place Albert Park  
marshallwhite.com.au

  
MARSHALLWHITE



Disclaimer: Information provided is believed to be accurate as at the date of printing, no responsibility is taken for any errors or omissions. It is your responsibility to obtain independent, professional advice. Personal information collected from you is for security purposes and to contact you should the property sell prior to auction. We may use this information to provide you with other real estate services including referrals to authorised financial services' providers. Visit our website at [www.marshallwhite.com.au](http://www.marshallwhite.com.au) for our privacy policy.