



20


MARSHALLWHITE

20 Rix Street
Glen Iris







Captivating Charm in Coveted Pocket

Nestled within a sought after leafy pocket walking distance to Gardiner's Creek bike path, parks, Tooronga Village, trams, Gardiner station, schools and freeway access, this classic solid brick c1920 single level residence's compelling charm, modern comfort and generous light-filled spaces highlight its instant family appeal. Decorative fretwork, high ceilings, leadlight windows and Baltic pine floors define the wide central hallway and a spacious bedroom with a gas powered heater/fireplace. Bathed in natural light, the expansive living and dining room featuring timber floors is served by an equally spacious well appointed kitchen. The living spaces open to a picturesque private garden and generous entertaining deck shaded by a large sail. The main bedroom with fireplace, walk in robe and en-suite is accompanied by three additional double bedrooms and a stylish bathroom.



Perfect for immediate family enjoyment, it also includes security intercom, laundry, water tank with pump, auto gate and garage. Land size: 614sqm approx

4  2  3 

Auction Saturday 8th December at 11.30am

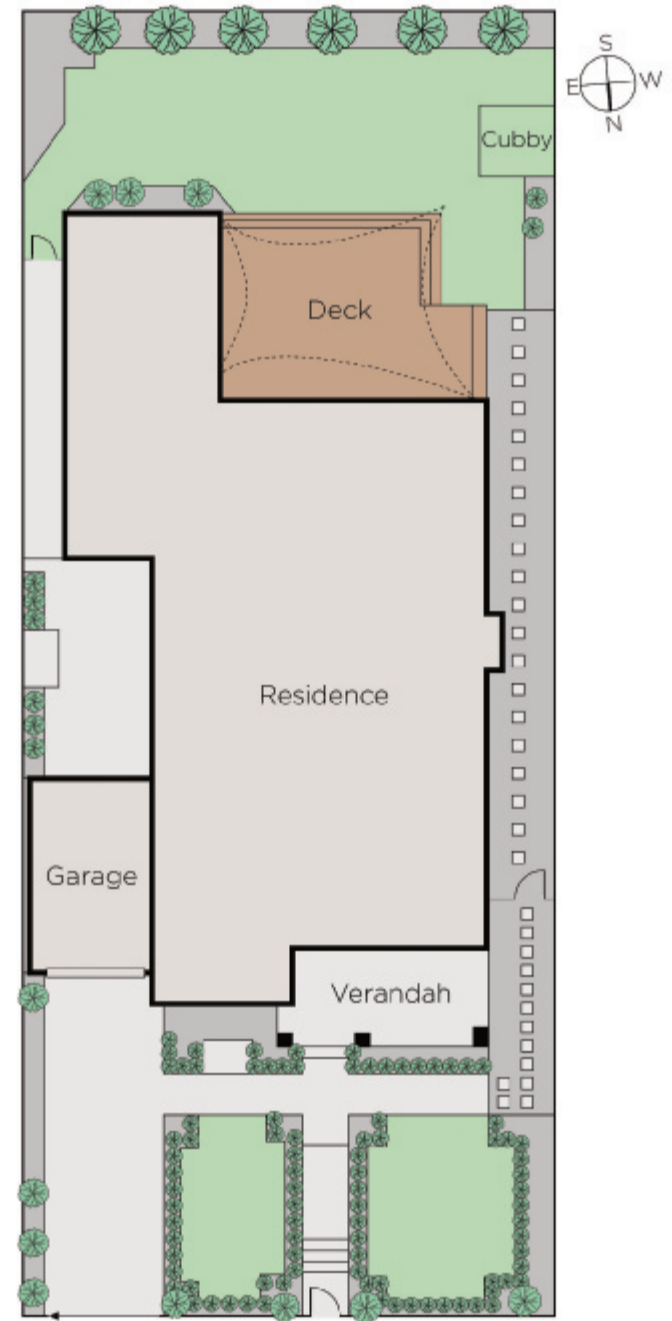
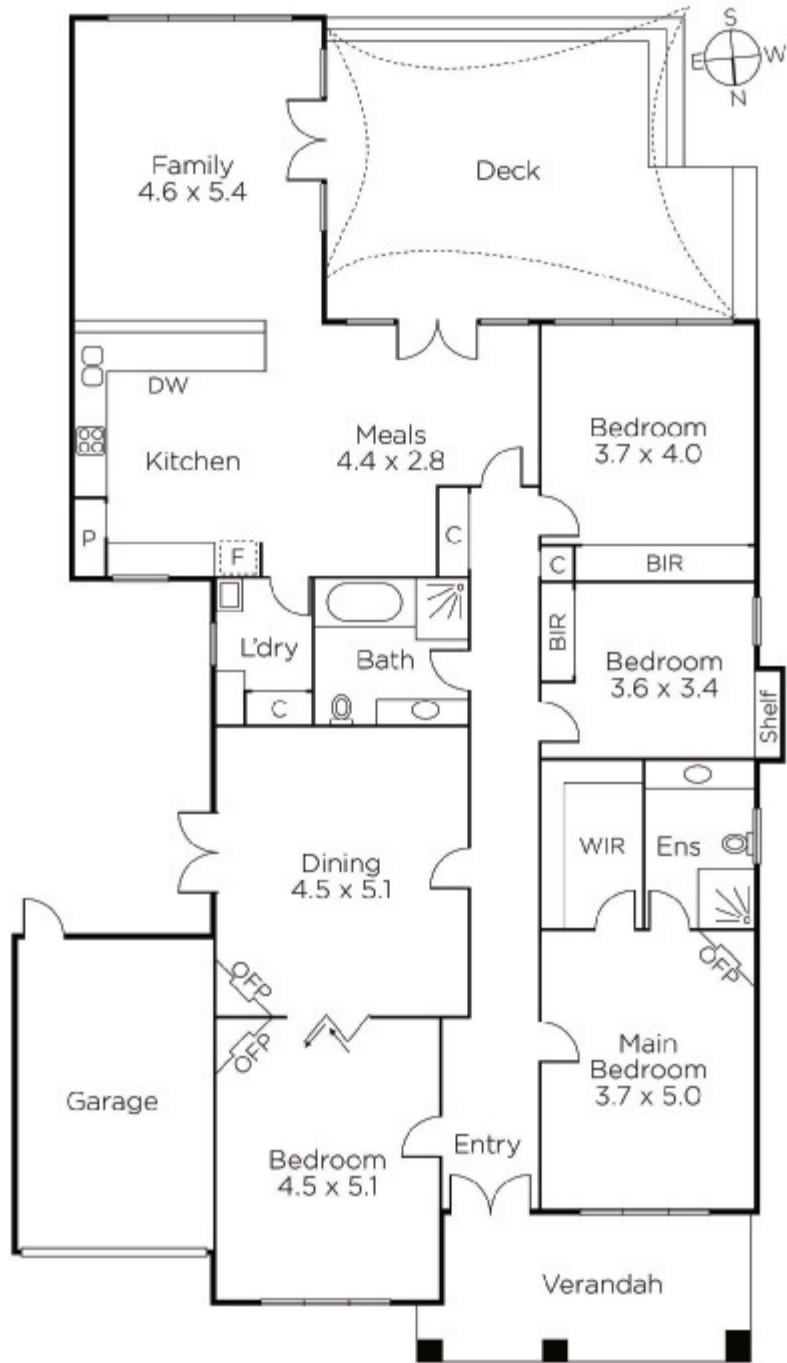
Grayson Rayner
0433 654 744

Duane Wolowiec
0418 567 581

Luke Saville
0437 720 806




MARSHALLWHITE
801 Glenferrie Road, Hawthorn



Disclaimer: Information provided is believed to be accurate as at the date of printing, no responsibility is taken for any errors or omissions. It is your responsibility to obtain independent, professional advice. Personal information collected from you is for security purposes and to contact you should the property sell prior to auction. We may use this information to provide you with other real estate services including referrals to authorised financial services' providers. Visit our website at www.marshallwhite.com.au for our privacy policy.