



  
MARSHALLWHITE

20 Kooyong Road  
Armadale





## Divine Inspiration

Recently refurbished, this stunning boutique residence within the former Advent Church Hall displays a superb blend of rustic original charm and inspired contemporary design. Behind the distinctive hall doors, oak stairs lead up to two inviting living rooms with 2-way gas fire, central courtyard, light-filled dining area (open fire) and gourmet kitchen with terrace. The main bedroom with designer en-suite and study nook is matched by two additional bedrooms, two stylish bathrooms and a courtyard. Near Armadale station, Malvern Central, schools and High St shops, it includes laundry, wine cellar and internally accessed garage.

20kooyongroad-armadale.com

3 3 1

Auction Saturday 16th September at 10.30am

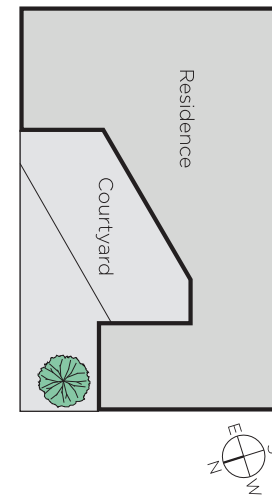
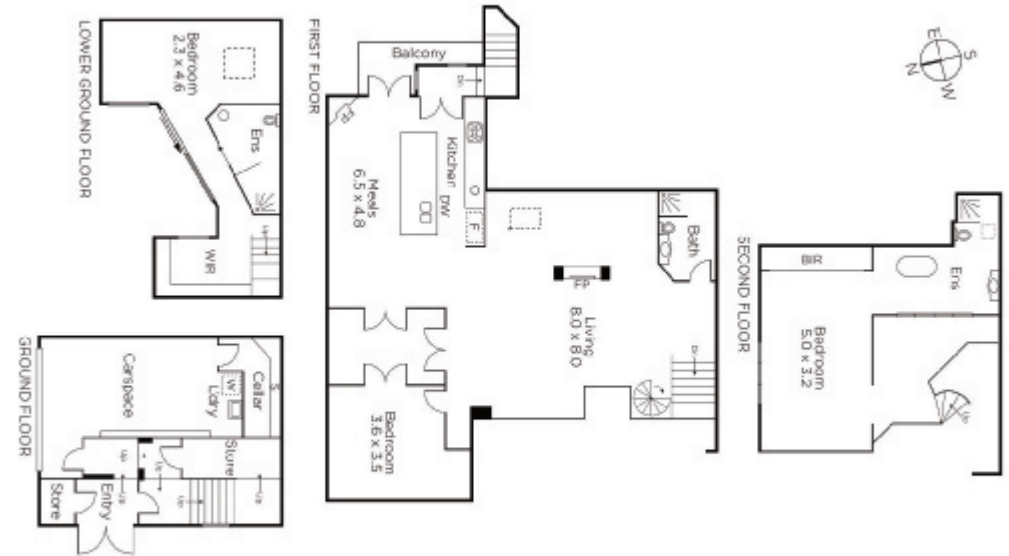
James Redfern 0412 360 667

David Volpato 0414 701 983

1111 High Street Armadale

marshallwhite.com.au

  
MARSHALLWHITE



Disclaimer: Information provided is believed to be accurate as at the date of printing, no responsibility is taken for any errors or omissions. It is your responsibility to obtain independent, professional advice. Personal information collected from you is for security purposes and to contact you should the property sell prior to auction. We may use this information to provide you with other real estate services including referrals to authorised financial services' providers. Visit our website at [www.marshallwhite.com.au](http://www.marshallwhite.com.au) for our privacy policy.