




MARSHALLWHITE

20 Iffla Street
South Melbourne



Stylish and Spacious with City Views

From the inspired style to the generous spaces and flexible yet low maintenance floor-plan, this sensational executive residence possesses every attribute for a first class inner bayside lifestyle close to Bay St, St Vincent Gardens, the market, light rail and schools. The expansive living/dining room and gourmet kitchen open to a large terrace offering city views. Impressive accommodation comprises the main bedroom with balcony, built in robe and en-suite, two additional bedrooms with robes, 4th bedroom with robe and balcony and two bathrooms. Includes alarm, video intercom, laundry and 2x garage.

4 3 2

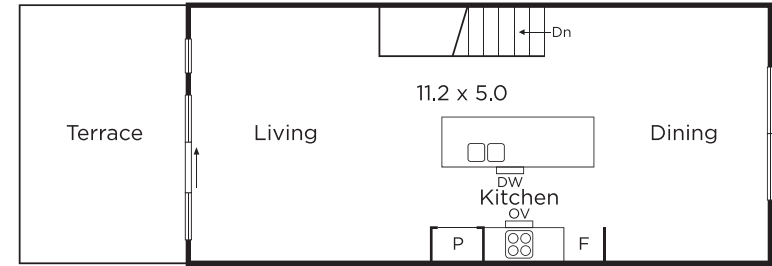
Auction Saturday 16th February at 10.30am

Nicholas Hoo
0435 728 272

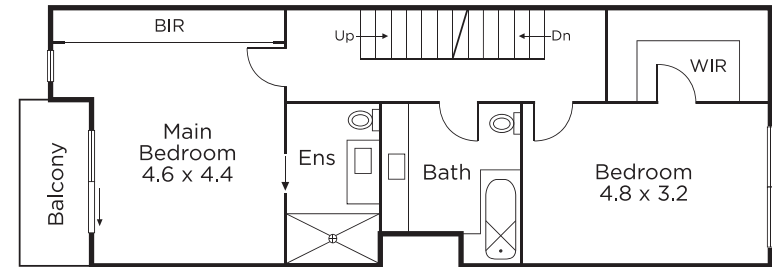
Georgia Whitford
0434 827 563


MARSHALLWHITE

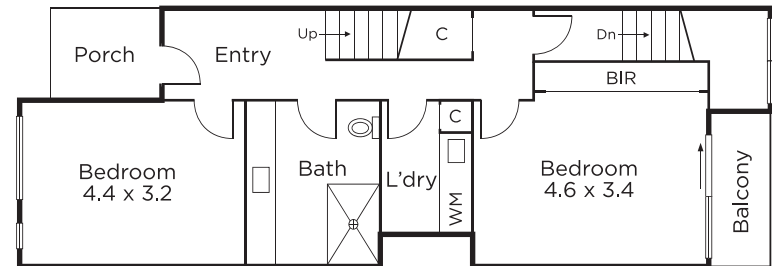
101 Dundas Place, Albert Park



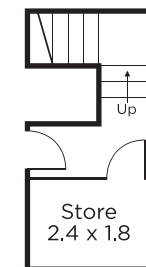
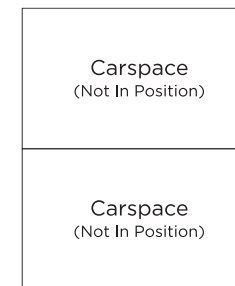
SECOND FLOOR



FIRST FLOOR



GROUND FLOOR



BASEMENT



Disclaimer: Information provided is believed to be accurate as at the date of printing, no responsibility is taken for any errors or omissions. It is your responsibility to obtain independent, professional advice. Personal information collected from you is for security purposes and to contact you should the property sell prior to auction. We may use this information to provide you with other real estate services including referrals to authorised financial services providers. Visit our website at www.marshallwhite.com.au for our privacy policy.