



MARSHALLWHITE

2 Heatherleigh Place
Malvern East



Compelling Elegance and Style

Idyllically set on the corner of a tranquil cul de sac near Terminus Village, trams, East Malvern station, schools & freeway access, this totally captivating single level c1920's residence showcases a stunning blend of period elegance & contemporary style. A light-filled interior is enhanced by limed timber floors through the entrance hall & beautiful sitting room. Oriented to capture western light, the generous living/dining room & Miele kitchen open to private gardens. The four spacious bedrooms are complemented by a study & two stylish bathrooms. Includes alarm, laundry & garage via Orville St. Land: 734sqm approx.

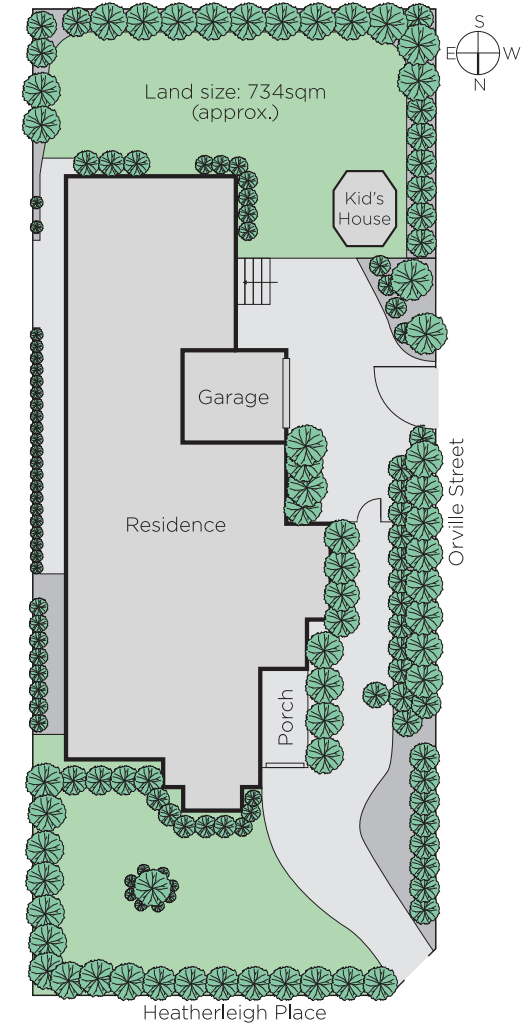
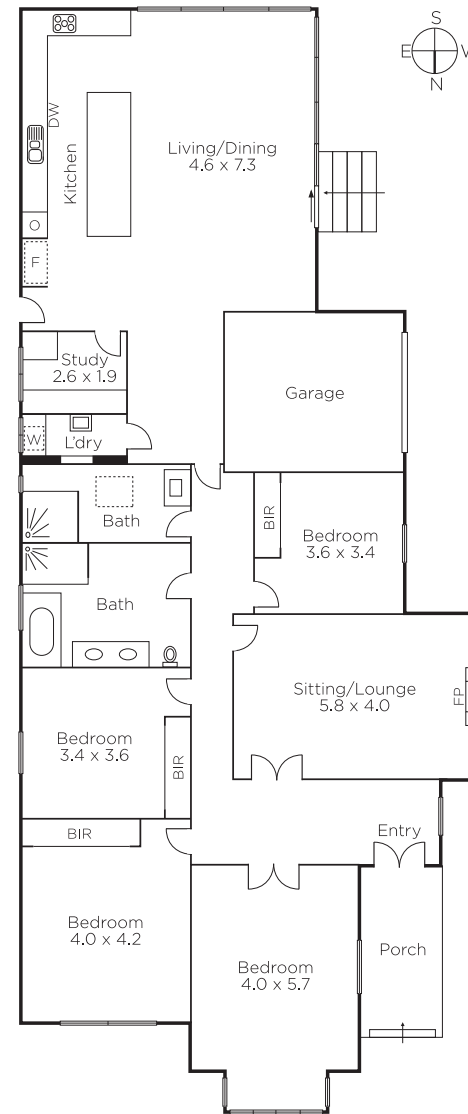
4 2 1

Auction Saturday 8th December at 11.30am

Madeline Kennedy
0411 873 913

David Volpato
0414 701 983

Daniel Wheeler
0411 676 058




MARSHALLWHITE

1111 High Street, Armadale

Disclaimer: Information provided is believed to be accurate as at the date of printing, no responsibility is taken for any errors or omissions. It is your responsibility to obtain independent, professional advice. Personal information collected from you is for security purposes and to contact you should the property sell prior to auction. We may use this information to provide you with other real estate services including referrals to authorised financial services providers. Visit our website at www.marshallwhite.com.au for our privacy policy.