



MARSHALLWHITE

2 Embling Road
Malvern





Edwardian Elegance, Prestigious Locale

Impressively set within deep private 892sqm approx. garden and pool surrounds, this gracious c1908 solid brick Edwardian residence's grandeur and elegance offers exceptional family appeal close to schools, Malvern Gardens, trams and Glenferrie Road shops. Rich period character including pressed metal ceilings and leadlight windows, are displayed through the generous entrance foyer, magnificent sitting room with open fireplace and formal dining room. Timber floors flow through the expansively proportioned living and dining room with an open fireplace and gourmet stone kitchen with butler's pantry. The living areas open out to the deep private leafy garden with solar heated pool. An abundance of versatile accommodation comprises two double bedrooms with built in robes and two bathrooms downstairs, while upstairs there is the main bedroom with built in robe, two additional bedrooms, a study and marble bathroom. Perfect for now while also offering scope to further update or alternatively to rebuild to your own tastes and requirements (STCA). Also appointed with alarm, wine cellar, laundry, irrigation, water tanks, garage and auto gates.

2emblingroad-malvern.com

4  3  2 

Auction Saturday 17th March at 12.30pm

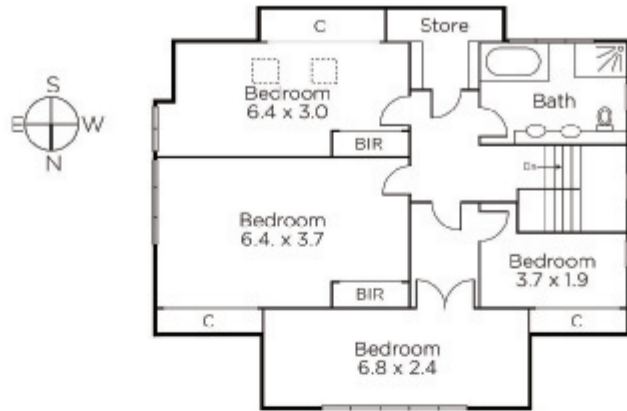
James Redfern
0412 360 667

David Volpato
0414 701 983

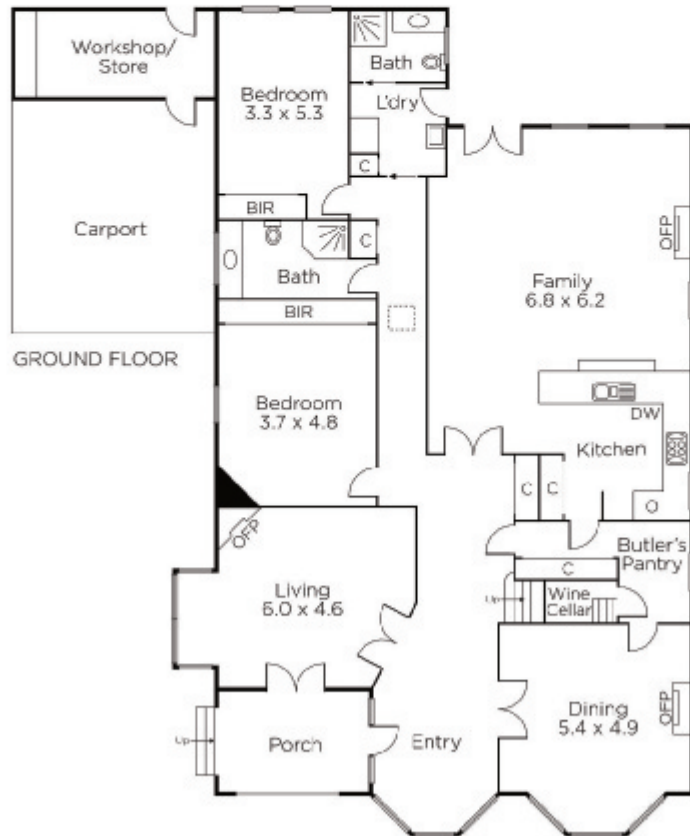
Madeline Kennedy
0411 873 913


MARSHALLWHITE

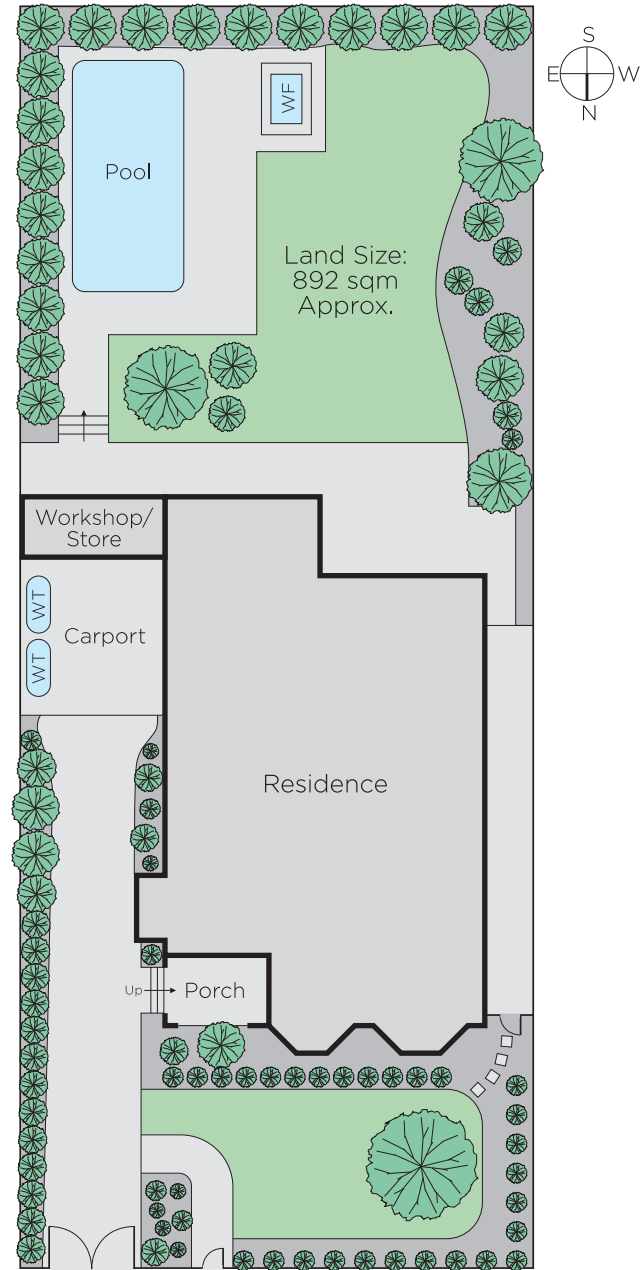
1111 High Street, Armadale



FIRST FLOOR



GROUND FLOOR



Disclaimer: Information provided is believed to be accurate as at the date of printing, no responsibility is taken for any errors or omissions. It is your responsibility to obtain independent, professional advice. Personal information collected from you is for security purposes and to contact you should the property sell prior to auction. We may use this information to provide you with other real estate services including referrals to authorised financial services' providers. Visit our website at www.marshallwhite.com.au for our privacy policy.