



MARSHALLWHITE
ONE

1G Robinson Road
Hawthorn



Exceptional Size, First Class Location

In the highly prized Scotch Hill precinct, this top floor apartment's magnificent proportions will surprise and amaze those searching for significant space with a lock up and leave focus. Set in the select surroundings of "Balmoral" with its superbly landscaped communal gardens, this stylish three-bedroom residence provides an ideal area entry, investment or active downsize opportunity with incredible central access to a host of amenities. Awash with natural light, impressive open plan living and dining spaces enjoy a full "house sized" contemporary kitchen with stone benchtops before stepping out to a broad al fresco terrace basking in northern sunshine and leafy views. Three spacious bedrooms, all with robes, share a crisp central bathroom with laundry, the main with tranquil views and full ensuite. Reverse cycle heating/cooling, intercom security, additional storage and two secure basement car spaces complete this private domain.

1Grobinsonroad-hawthorn.com

3 2 2

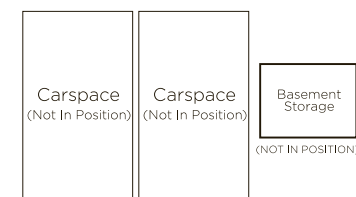
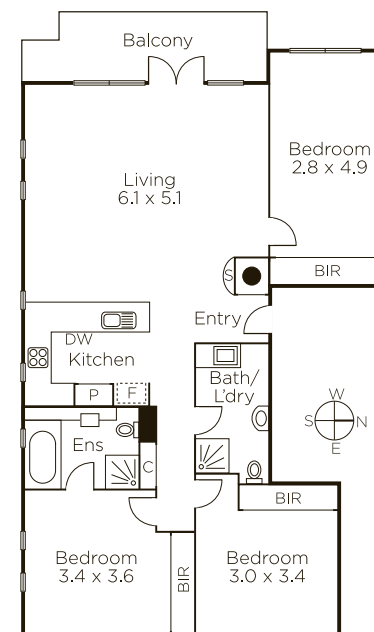
Auction Saturday 3rd June at 3.30pm

Luke Saville 0437 720 806

Danny See 0402 533 853

801 Glenferrie Road Hawthorn

9822 9999 mwone.com.au




MARSHALLWHITE
ONE

Disclaimer: Information provided is believed to be accurate as at the date of printing, no responsibility is taken for any errors or omissions. It is your responsibility to obtain independent, professional advice. Personal information collected from you is for security purposes to contact you should the property sell prior to auction. We may use this information to provide you with other real estate services including referrals to authorized financial services' providers. Visit our website at www.mwone.com.au for our privacy policy.