



19B Brickwood Street,  
Brighton







## Contemporary 4 Bedroom Townhouse of Family Home Proportions

Positioned between Star of the Sea and Elsternwick Primary, and close to Martin Street shopping strip, Gardenvale Station and the beach, this home is located in a much sought after pocket of Brighton. Featuring many unique elements, this brand new residence reaches a new level of integrity and finish with many quality inclusions. Architect designed with northern orientation and carefully crafted from the ground up, every little detail has been thoughtfully designed to offer modern living over 2 levels suitable for family, downsizers, upsizers or investors. Edgy, spacious, solid, light and totally innovative, the styling is warm and simple with a luxurious palette of understated elegance. High ceilings, beautiful oiled timber frames, floor to ceiling windows and doors are complimented by stone Italia benches and customized built in joinery, including a specially designed bar with wine fridge. The bathrooms have minimalist fittings and concealed lighting. Keyless entry and double garaging.

19a-19brickwoodstreet-brighton.com

4  3  2 

Auction Saturday 22nd April at 10.30am

Brian Devlin 0419 395 241

225 Bay Street Brighton

Nadene Gole 0425 792 784

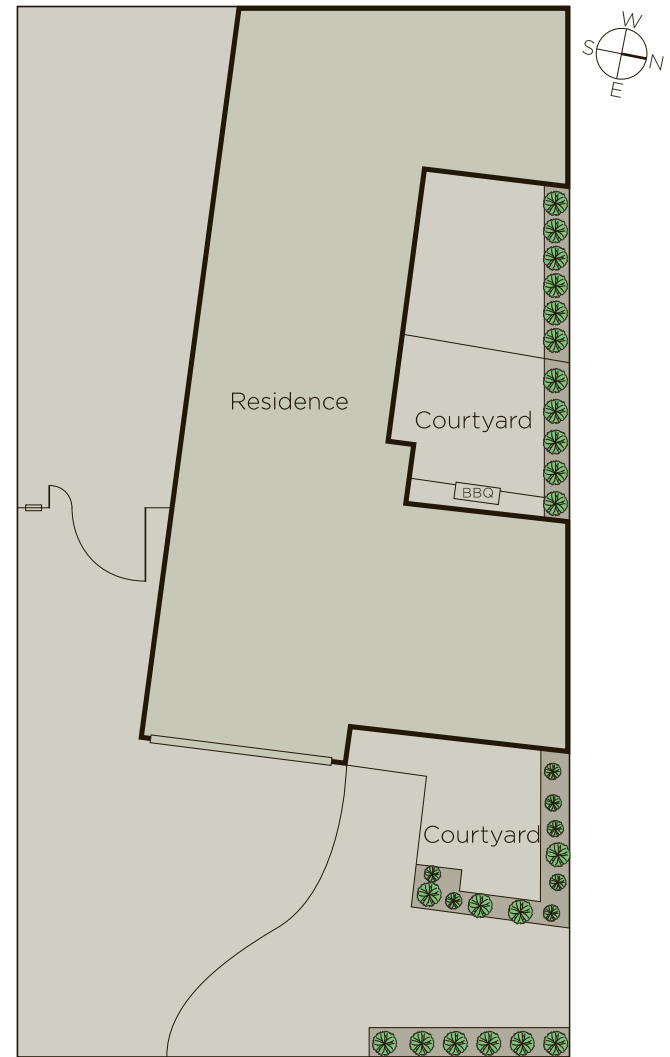
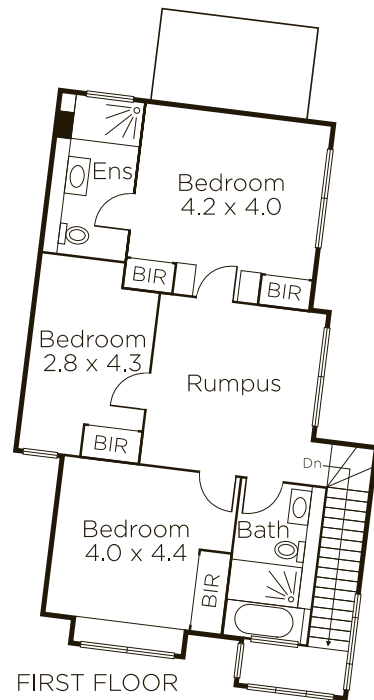
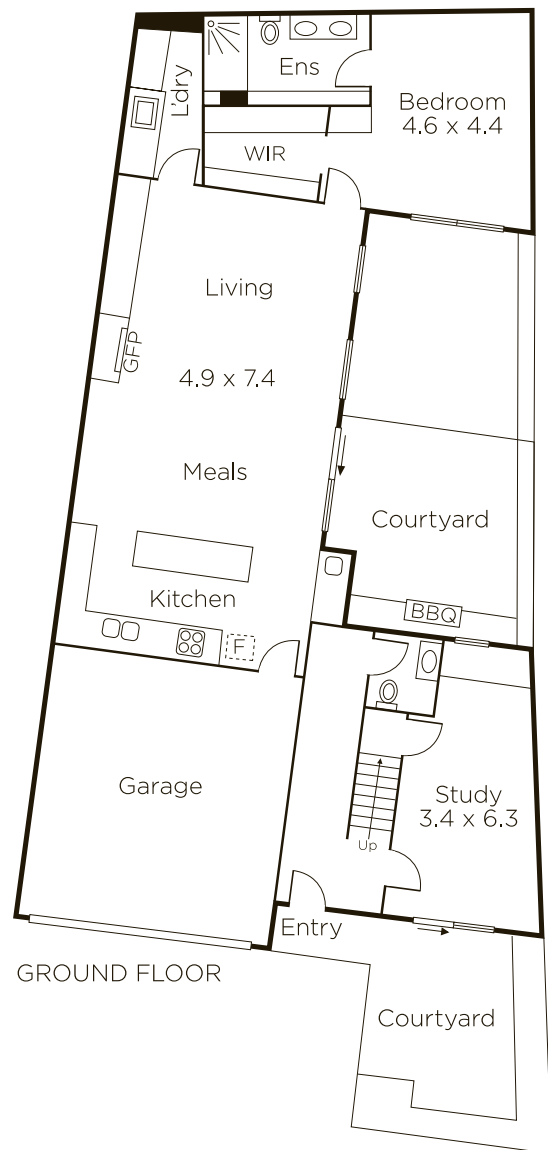
marshallwhite.com.au

In Conjunction with Biggin & Scott

Trudy Biggin 0417 127 528



  
MARSHALLWHITE



Disclaimer: Information provided is believed to be accurate as at the date of printing, no responsibility is taken for any errors or omissions. It is your responsibility to obtain independent, professional advice. Personal information collected from you is for security purposes and to contact you should the property sell prior to auction. We may use this information to provide you with other real estate services including referrals to authorised financial services' providers. Visit our website at [www.marshallwhite.com.au](http://www.marshallwhite.com.au) for our privacy policy.