



MARSHALLWHITE

1948 Malvern Road
Malvern East



A Serene Sanctuary of Style

The unforgettable blend of period elegance and bespoke designer style that defines this totally captivating c1927 residence is more than matched by its absolutely stunning landscaped low maintenance garden surrounds. Timber floors flow through the hall to a beautiful sitting room, main BR with stylish ensuite & BIR, 3 additional BRs & designer bathroom. The gourmet kitchen & dining area open to a covered terrace & garden with studio. Near trains, shops, parks, freeway access, Chadstone & schools, it includes heating/cooling, powder-room, laundry, solar panels, irrigation, water tanks & carport. Land size: 734sqm approx.

1948malvernroad-malverneast.com

4 2.5 3

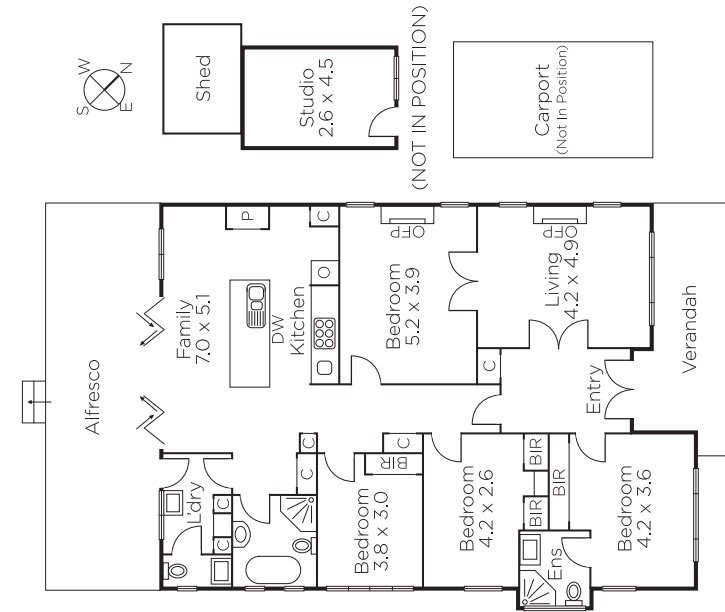
Auction Saturday 24th February at 2pm

Brendan Allen
0499 229 007

David Volpato
0414 701 983


MARSHALLWHITE

1111 High Street, Armadale



Disclaimer: Information provided is believed to be accurate as at the date of printing, no responsibility is taken for any errors or omissions. It is your responsibility to obtain independent, professional advice. Personal information collected from you is for security purposes and to contact you should the property sell prior to auction. We may use this information to provide you with other real estate services including referrals to authorised financial services providers. Visit our website at www.marshallwhite.com.au for our privacy policy.