

# Jellis Craig

Jellis Craig Boroondara Group  
Hawthorn – Balwyn – Glen Iris  
248 Burwood Road, Hawthorn 3122  
9810 5000  
[jelliscraig.com.au](http://jelliscraig.com.au)



19 THE RIDGE  
CANTERBURY

**Jellis  
Craig**

[www.19theridge-canterbury.com](http://www.19theridge-canterbury.com)  
[jelliscraig.com.au](http://jelliscraig.com.au)



*A grand entertainer's  
masterpiece*



A cutting-edge renovation has seen the rebirth of this prestigious home into a magnificent entertainer with an exclusive lifestyle focus. The tennis court, heated pool and fitness centre are matched with a wine cellar and Gaggenau, Miele and Highland kitchen. Includes formal sittingroom/library, formal dining, family room, meals, retreat, and BBQ room with bi-fold doors out to the alfresco. The four/five bedroom plus home office

floorplan is complemented by six deluxe bathrooms including a stone/porcelain ensuite in the main bedroom with generous dressing room. Fitted with every high-end luxury, be thrilled by the smart home automation and seven-car garage. Walk to the tram and private schools.

[www.19theridge-canterbury.com](http://www.19theridge-canterbury.com)

4  6  7  6  1  1  1 

**EXPRESSIONS OF INTEREST**  
Closing Wednesday 29th March at 3pm

**INSPECT** By appointment

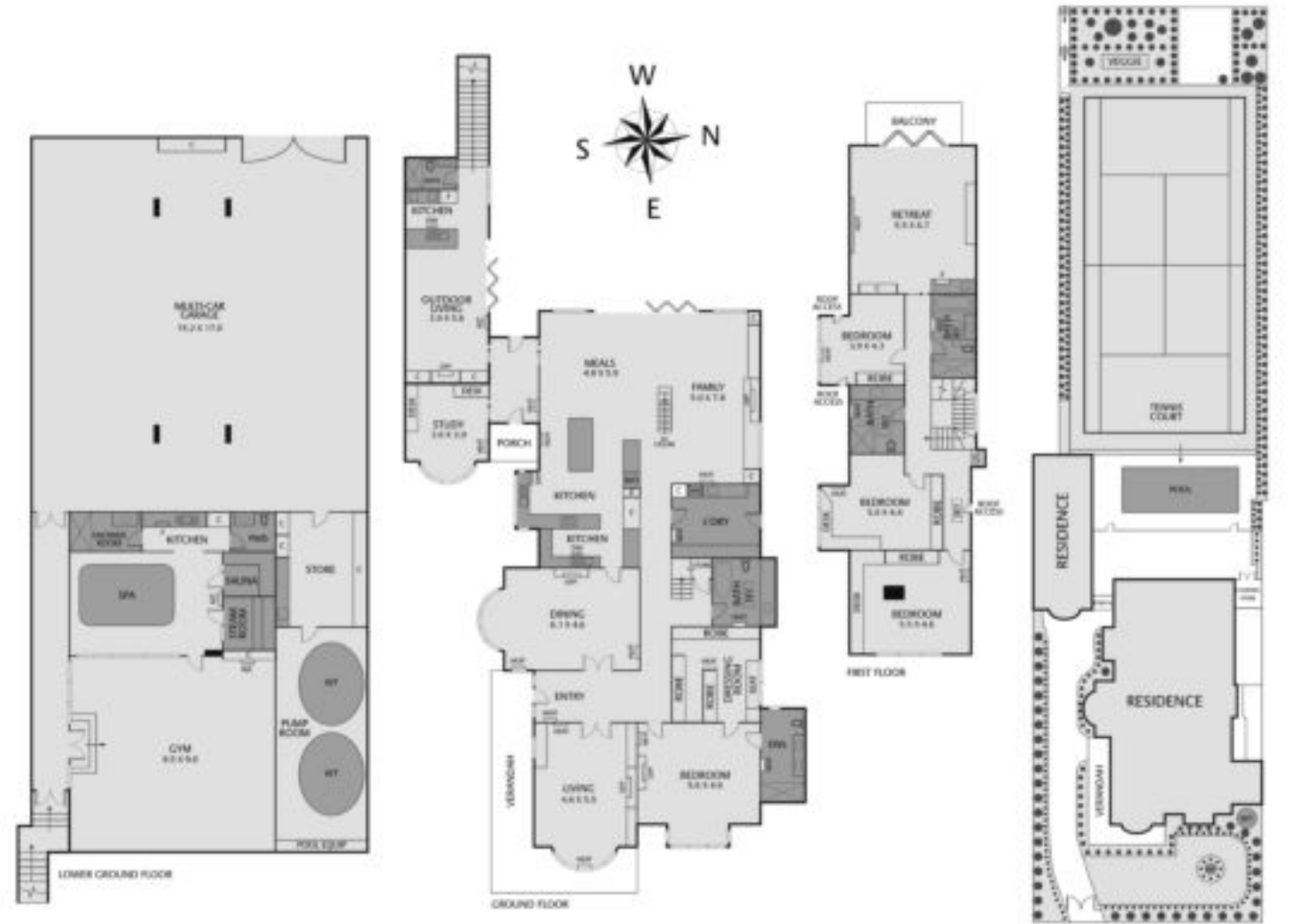
**LAND** 1,639 sqm approx.

**CONTACT** Peter Vigano 0407 301 224  
Steven Abbott 0407 324 240

**WEB** [jelliscraig.com.au](http://jelliscraig.com.au)

# Dual street frontages





Disclaimer The measurements provided of the land and/or property may not be 100% accurate. In order to satisfy yourself of the exact dimensions of the property/land/or of each room, we advise you to conduct your own measurements and/or engage the services of a licensed surveyor. Responsibility for any omissions or errors contained herein is expressly denied. Jellis Craig (Hawthorn) and Company Pty Ltd ABN 77 603 848 264, Licensed Estate Agents, Auctioneers and Property Managers.



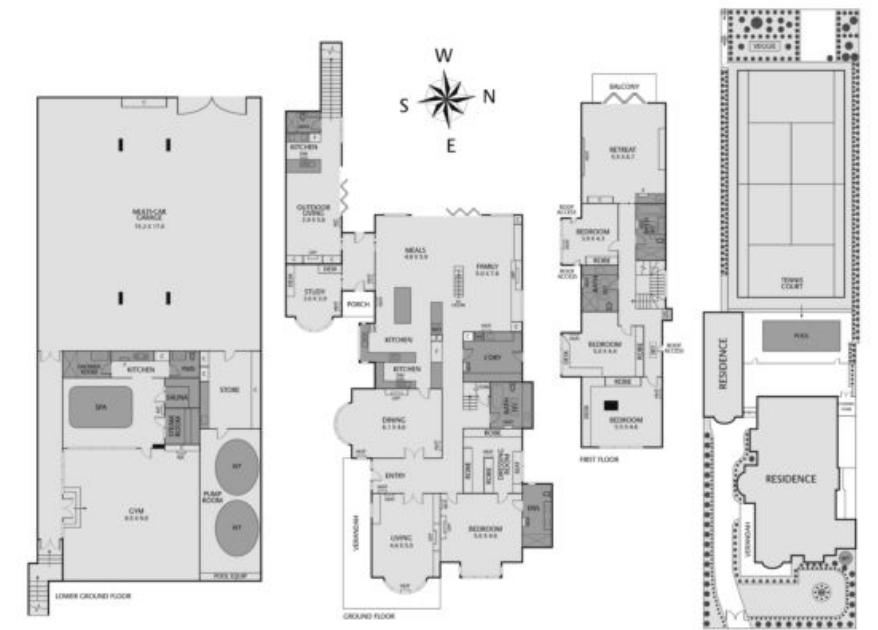
## CANTERBURY 19 The Ridge

4 6 7 6 1

### A grand-scale entertainer's masterpiece

A cutting-edge renovation has seen the rebirth of this prestigious home into a magnificent entertainer with an exclusive lifestyle focus. The tennis court, heated pool and fitness centre are matched with a wine cellar and Gaggenau, Miele and Highland kitchen. Includes formal sittingroom/library, formal dining, family room, meals, retreat, and BBQ room with bi-fold doors out to the alfresco. The four/five bedroom plus home office floorplan is complemented by six deluxe bathrooms including a stone/porcelain ensuite in the main bedroom with generous dressing room. Fitted with every high-end luxury, be thrilled by the smart home automation and seven-car garage. Walk to the tram and private schools.

[www.19theridge-canterbury.com](http://www.19theridge-canterbury.com)



Disclaimer The measurements provided of the land and/or property may not be 100% accurate. In order to satisfy yourself of the exact dimensions of the property/land/or of each room, we advise you to conduct your own measurements and/or engage the services of a licensed surveyor. Responsibility for any omissions or errors contained herein is expressly denied. Jellis Craig (Hawthorn) and Company Pty Ltd ABN 77 603 848 264, Licensed Estate Agents, Auctioneers and Property Managers.

CANTERBURY 19 The Ridge

# Jellis Craig

#### PRIVATE SALE

INSPECT As advertised or by appointment

LAND 1,639 sqm approx.

CONTACT Peter Vigano 0407 301 224  
Steven Abbott 0407 324 240

OFFICE Hawthorn 9810 5000

WEB [jelliscraig.com.au](http://jelliscraig.com.au)

