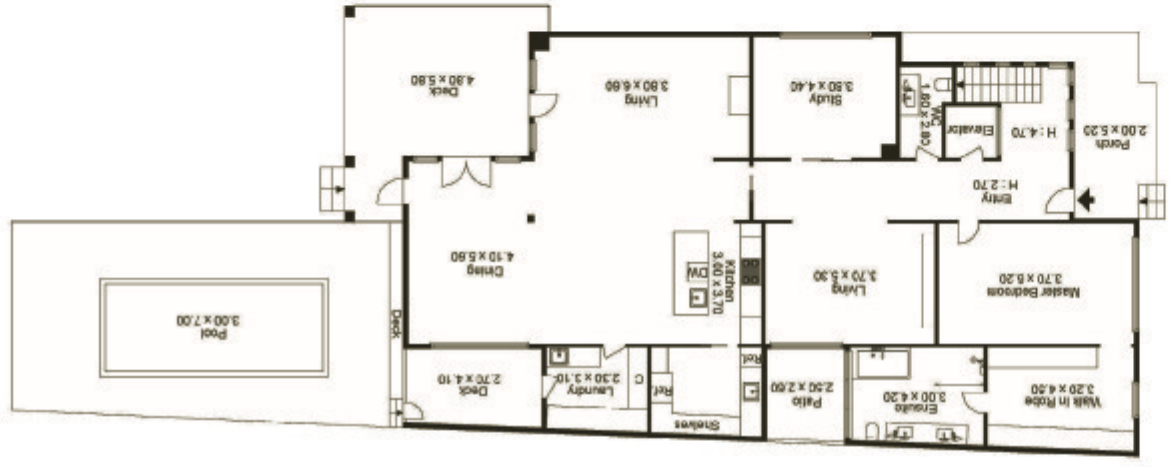
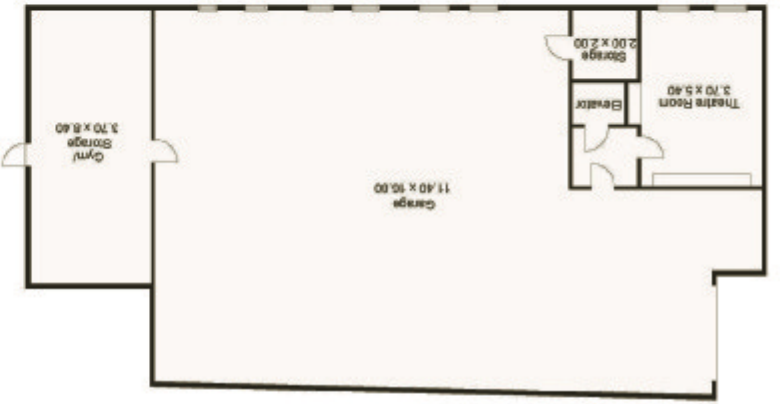




Ground Floor



Basement



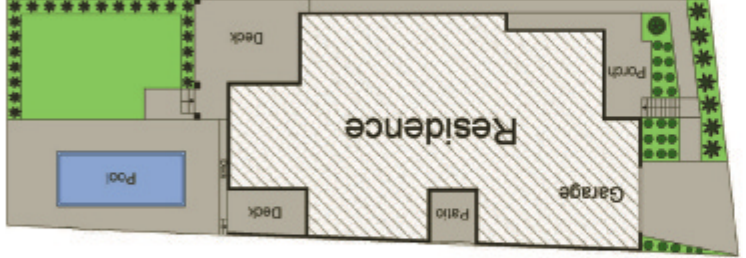
1st Floor



2nd Floor



Siteplan



19 Surf Avenue Beaumaris



19 Surf Avenue
Beaumaris

Ultimate Family Design, Ultimate Location



Ultimate Family Design, Ultimate Location

On high between MacDonald Reserve & Rickett's Point, this immense 5 bedroom & home-office, 4.5 bathroom, 5+ zone home offers view-focused, family-focused architect-design with basement theatre & gym, formal, family & al fresco areas, 2 vast 1st-flr lounges (1 with bay-views & balcony) & a spectacular bay-panorama roof-deck! With a ground-floor master domain & ensuite access for every bedroom, there's an llve kitchen with butlers pantry, a massive main ensuite, dressing-room...& industrial-edge finishes including timber, stone, Corian & a sculptural glass-lift. With every luxury including 8-car garage & reticulated north-west gardens with tiled pool, this is the ultimate family design in the ultimate parkside, beachside, Beaumaris College location.

5 4+ 8

Expressions of Interest

Tuesday 20 March - 5.00pm

Contact

Romana Altman 0414 804 270
raltman@buxton.com.au

Mark Earle 0419 310 707
mearle@buxton.com.au

