



MARSHALLWHITE

19 Leura Grove
Hawthorn East



Elite Location, Prime Opportunity

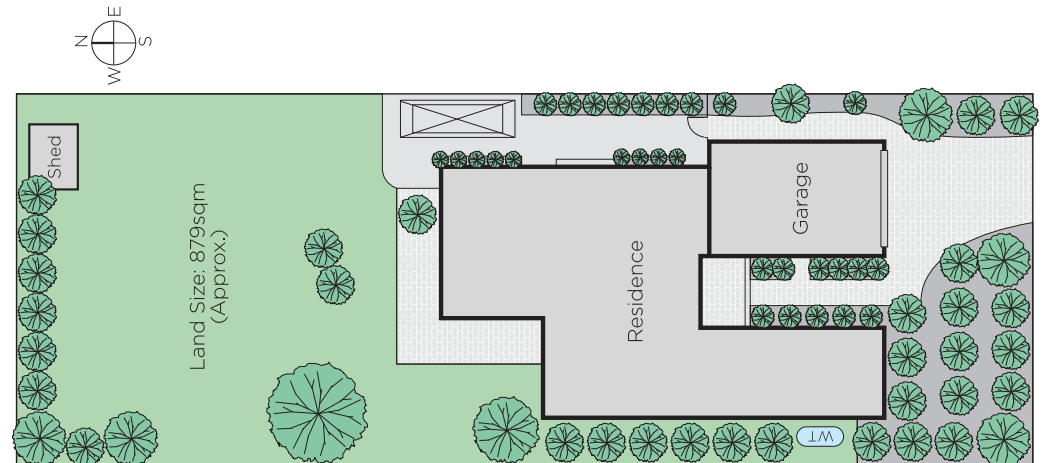
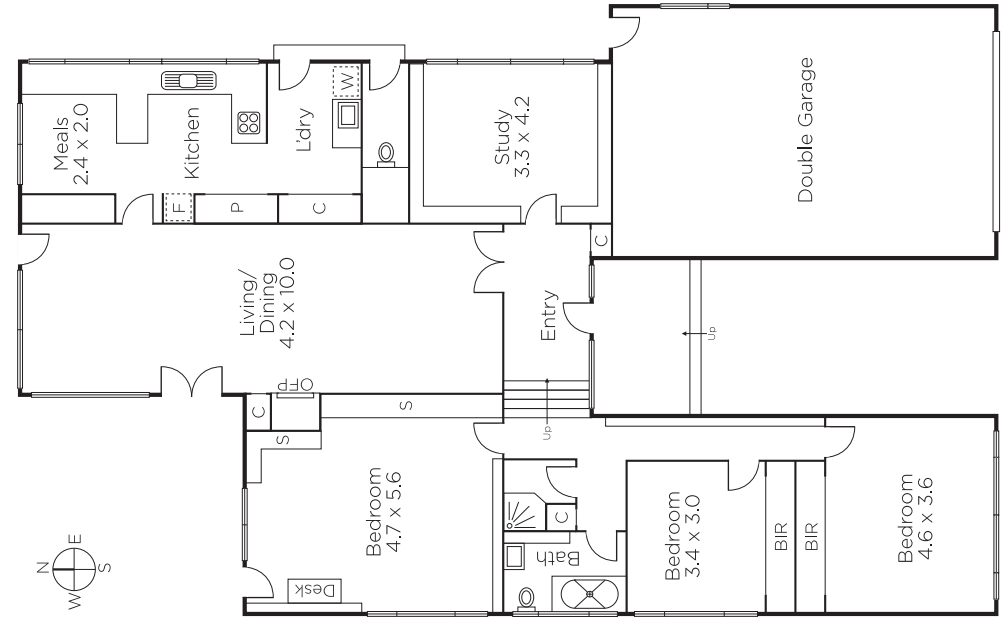
Defined by spacious proportions & light filled living spaces, this 3 bedroom domain offers zoned interiors ideal for family living. While perfectly comfortable now, the alluring opportunity exists for refurbishment or even to develop or build a new home (STCA). A generous living & dining area leads to a functional kitchen offering extensive storage & space for casual dining. This promising domain includes 3 superb bedrooms, 2 with built in robes & 1 with custom shelving & a family bathroom with separate shower. Completed by an extensive sundrenched garden, study, laundry & 2 car garage. 879sqm (approx.)

3 1 2

Expressions of Interest Close Tuesday 14th August at 5pm

Tori McGregor
0400 633 992

Michael Wood
0425 280 191




MARSHALLWHITE

801 Glenferrie Road, Hawthorn

Disclaimer: Information provided is believed to be accurate as at the date of printing, no responsibility is taken for any errors or omissions. It is your responsibility to obtain independent, professional advice. Personal information collected from you is for security purposes and to contact you should the property sell prior to auction. We may use this information to provide you with other real estate services including referrals to authorised financial services providers. Visit our website at www.marshallwhite.com.au for our privacy policy.