



  
MARSHALLWHITE  
19 Hotham Street  
Hughesdale



## Period Appeal, Family Focus

Behind the picturesque façade of this captivating c1918 family residence, superbly proportioned and intelligently zoned dimensions balance period elegance with modern comfort. High ceilings and Baltic pine floors flow through the hall to a sitting room with gas fire and dining area. The modern kitchen and spacious family room open to a private garden. The main bedroom and bathroom are set apart from two additional double bedrooms, study and central bathroom. A second level comprises a fourth bedroom/retreat with toilet and an abundance of storage. Land size: 774sqm approx. with 20m frontage approx.

19hothamstreet-hughesdale.com

4 2.5 4

Auction Saturday 14th October at 2.30pm

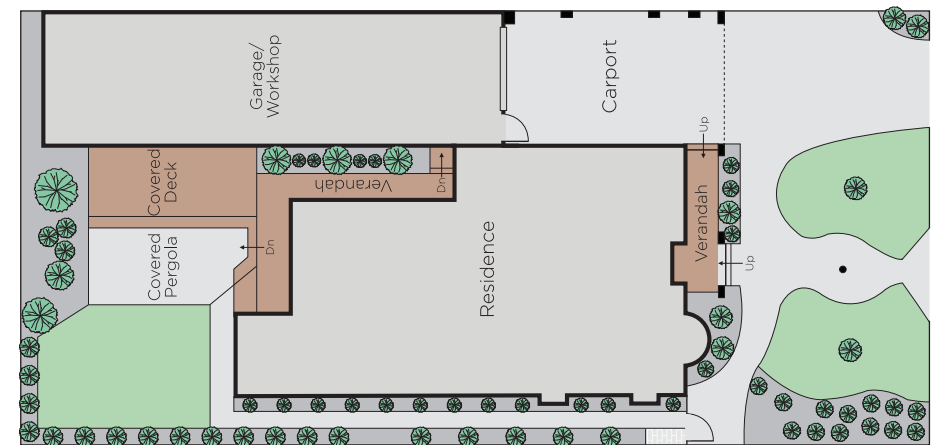
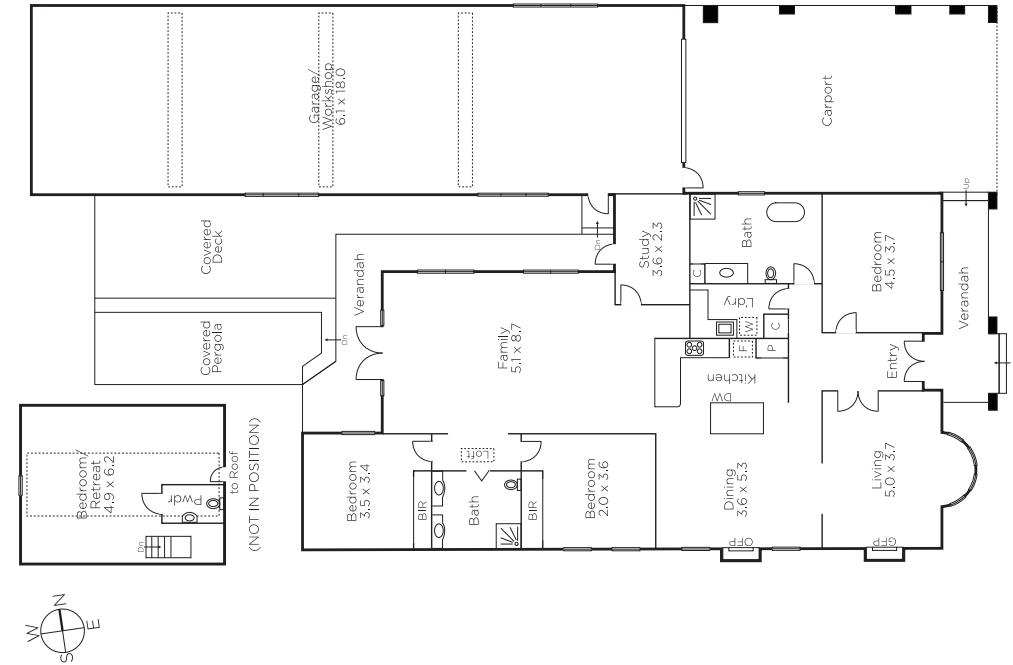
Sam Hobbs 0404 164 444

Justine Hannemann 0412 266 218

101 Dundas Place Albert Park

marshallwhite.com.au

  
MARSHALLWHITE



Disclaimer: Information provided is believed to be accurate as at the date of printing, no responsibility is taken for any errors or omissions. It is your responsibility to obtain independent, professional advice. Personal information collected from you is for security purposes and to contact you should the property sell prior to auction. We may use this information to provide you with other real estate services including referrals to authorised financial services' providers. Visit our website at [www.marshallwhite.com.au](http://www.marshallwhite.com.au) for our privacy policy.