



655sqm
(approx.)



MARSHALLWHITE

19 Elgin Avenue
Armadale



"Benefel" - An Exceptional Opportunity

A splendid example of 1940's Art Deco Nautical style architecture, this iconic double brick residence's pristine originality highlights its outstanding potential to renovate while its superb 655sqm approx. allotment in a coveted cul de sac is the ideal site to build a new luxury home (STCA). A wide entrance hall introduces an evocative sitting room, generous dining room and large original kitchen with cellar underneath and the casual dining area leading out to the deep private northeast garden. Parquet floors feature in two bright double bedrooms and a spacious living room accompanied by a third bedroom and tiled bathroom.

19elginavenue-armadale.com

3 2 4

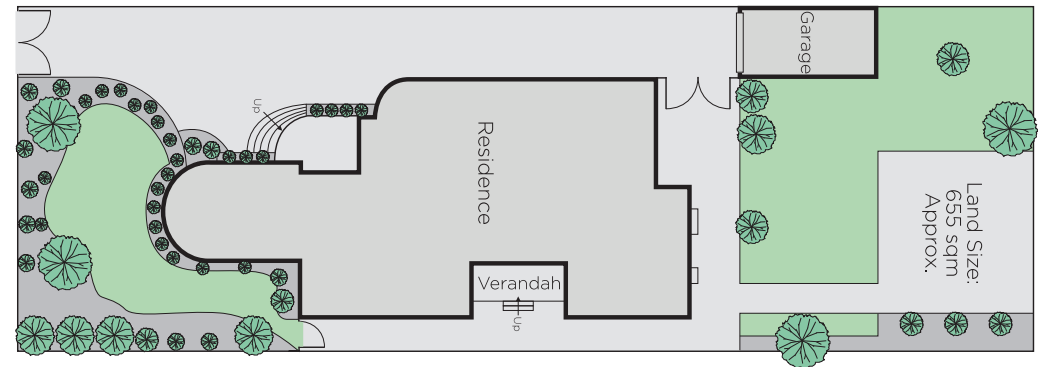
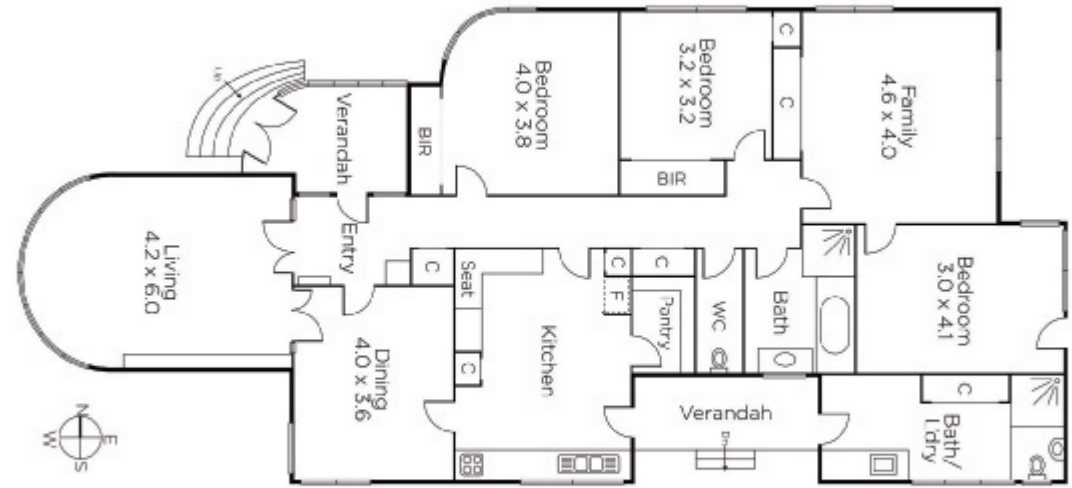
Auction Saturday 5th May at 10.30am

Fraser Cahill
0400 592 572

Richard Mackinnon
0414 822 579


MARSHALLWHITE

1111 High Street, Armadale



Disclaimer: Information provided is believed to be accurate as at the date of printing, no responsibility is taken for any errors or omissions. It is your responsibility to obtain independent, professional advice. Personal information collected from you is for security purposes and to contact you should the property sell prior to auction. We may use this information to provide you with other real estate services including referrals to authorised financial services providers. Visit our website at www.marshallwhite.com.au for our privacy policy.