



MARSHALLWHITE
ONE

1/81 Derby Street
Kew



Leafy Sanctuary with a Junction Lifestyle

Elevated from the street with a beautiful setting and a generous garden, this large, light-filled and immaculately presented two bedroom apartment is one of only four with an incredibly private sense of sanctuary; all within easy reach of Kew Junction.

Bright and airy with leafy vistas all around, the generous open plan living and kitchen flows out to a large balcony with access to the private courtyard. A private lock-up garage and secure driveway parking for a second vehicle are terrific conveniences in this secure home with intercom entry, a big bathroom with independent bath and shower, large bedrooms with robes plus separate WC and laundry. Easy city access and terrific local shops, cafes and restaurants are all part of the appeal of a location so close to Kew Junction, whilst prestigious schools, Studley Park with public transport and the freeway are all in close proximity.

1-81derbystreet-kew.com

2 1 2

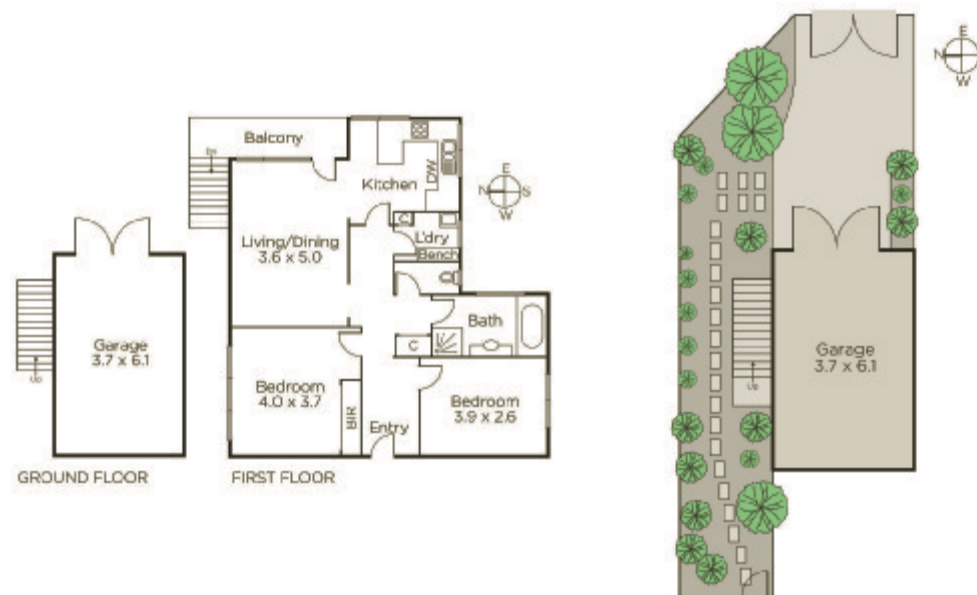
Auction Saturday 19th May at 12pm

Danny See 0402 533 853

Bethany Wilkinson 0449 285 813

801 Glenferrie Road Hawthorn

9822 9999 mwone.com.au



MARSHALLWHITE
ONE

Disclaimer: Information provided is believed to be accurate as at the date of printing, no responsibility is taken for any errors or omissions. It is your responsibility to obtain independent, professional advice. Personal information collected from you is for security purposes to contact you should the property sell prior to auction. We may use this information to provide you with other real estate services including referrals to authorized financial services providers. Visit our website at www.mwone.com.au for our privacy policy.