



MARSHALLWHITE

18 Weatherly Grove
Brighton



Cherished Elegance and Big Potential

Admire the 1930s character and plan on making this your dream home, matching space and style in a leafy street. The beauty of this home is revealed in elegant lounge and dining rooms, a generous family room that leads out to a light-filled garden, and three bedrooms. Solid-brick and on a corner block of 766 sqm approx, the design is idyllic for now and your future plans STCA. Original features are complemented with today's improvements, including solar power, double-glazing in three rooms, and a large double garage with access from two streets. Prized central address near schools, Church St, and William St Reserve.

18weatherlygrove-brighton.com

3 1 2

Auction Saturday 20th May at 4pm

Kate Strickland 0400 125 946

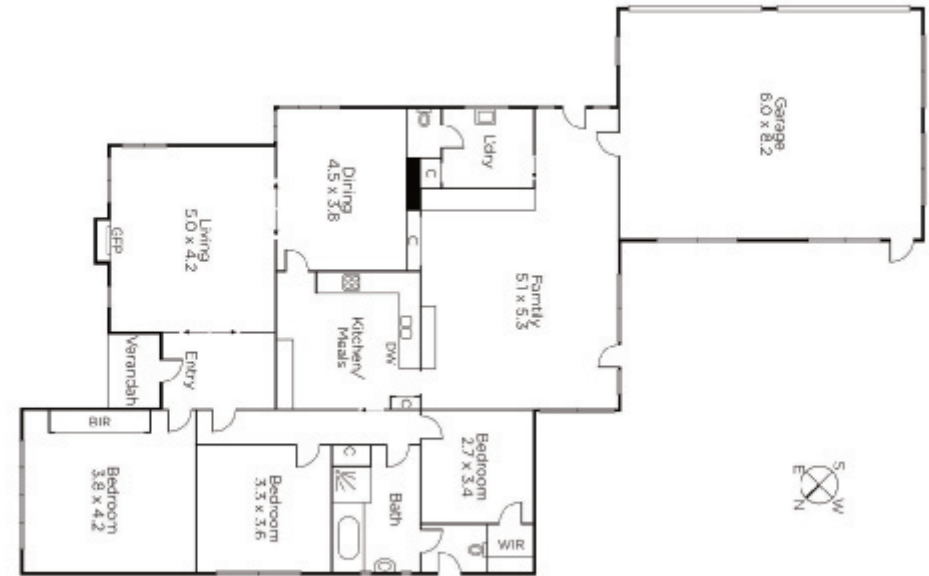
Gerry Gordon 0418 144 000

Rui Shen 0450 790 615

225 Bay Street Brighton

marshallwhite.com.au


MARSHALLWHITE



Disclaimer: Information provided is believed to be accurate as at the date of printing, no responsibility is taken for any errors or omissions. It is your responsibility to obtain independent, professional advice. Personal information collected from you is for security purposes and to contact you should the property sell prior to auction. We may use this information to provide you with other real estate services including referrals to authorised financial services' providers. Visit our website at www.marshallwhite.com.au for our privacy policy.