



MARSHALLWHITE

18 Pakington Street
Kew





Classic Edwardian in a Garden Oasis

Nestled behind a picket fence and lush front garden moments from Kew Junction, this classic solid brick Edwardian family residence c1910 superbly matches period integrity with a stylish Architect designed contemporary family domain, which leaves a lasting impression. The recently refurbished interior features high ceilings with roses, leadlight glass and stained woodwork representing its past with a sky lit hallway flowing to a sitting room with OFP, four bedrooms, main with WIR and fully-tiled ensuite, storeroom, family bathroom and laundry. Through to the brilliant open-plan informal living and dining room designed to capture northern sunshine and incorporating a sleek kitchen with island bench and Euro stainless steel appliances. All flowing to a sun-drenched deck with a spa and set in a private garden oasis framed with Silver Birch trees and tall James Stirling Pittosporums - just perfect for relaxed outdoor dining and entertaining with family or friends. Other features include alarm, marble bench-tops, ducted heating, watering system, garden shed and remote gate to double off-street parking. Land size: 642sqm approx.

18pakingtonstreet-kew.com

5  2  2 

Auction Saturday 17th March at 3.30pm

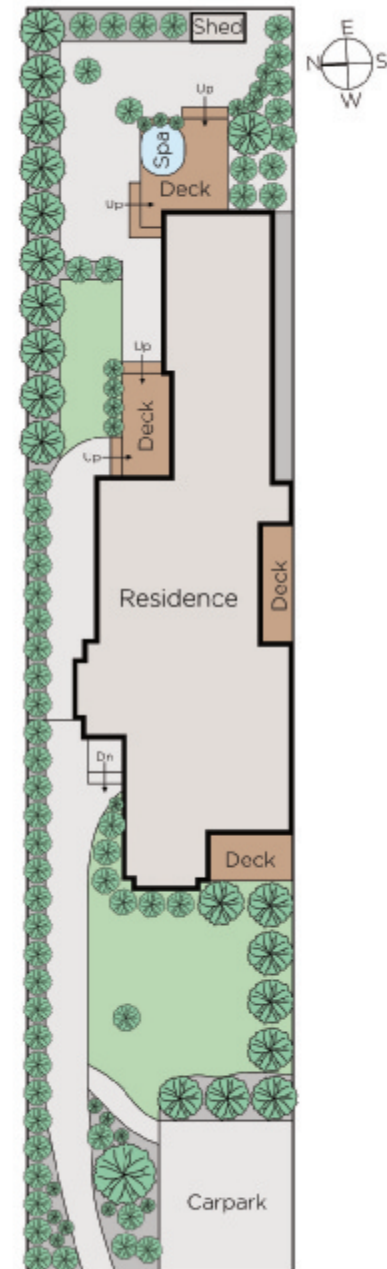
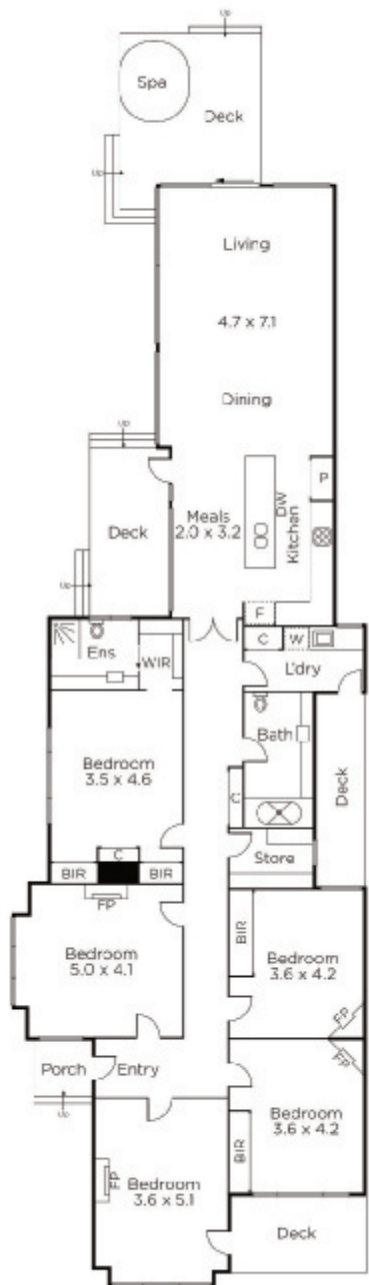
James Tostevin
0417 003 333

Charlie Tostevin
0431 713 205

Scarlett Hang
0405 054 888


MARSHALLWHITE

801 Glenferrie Road, Hawthorn



Disclaimer: Information provided is believed to be accurate as at the date of printing, no responsibility is taken for any errors or omissions. It is your responsibility to obtain independent, professional advice. Personal information collected from you is for security purposes and to contact you should the property sell prior to auction. We may use this information to provide you with other real estate services including referrals to authorised financial services' providers. Visit our website at www.marshallwhite.com.au for our privacy policy.