



MARSHALLWHITE

18 Miller Grove
Kew





Fine Family Living in the Heart of Kew

Ideally situated on an expansive 710sqm (approx.) allotment in a quiet cul-de-sac, just 150m from High Street tram, this traditional red brick c1920 Federation Bungalow combines all of the charm of the era with the finest of contemporary comforts and conveniences. Sympathetically extended and comprehensively renovated in recent years, the home offers some 340sqm / 37 squares (approx.) of family accommodation opening to a solar heated swimming pool in a private, sheltered setting in the north facing rear garden. Nine generously proportioned principal rooms include four double bedrooms and a large retreat or study, complemented by three luxuriously appointed modern bathrooms and a guest powder room.

18millergrove-kew.com

4  3  2 

Auction Saturday 28th April at 1.30pm

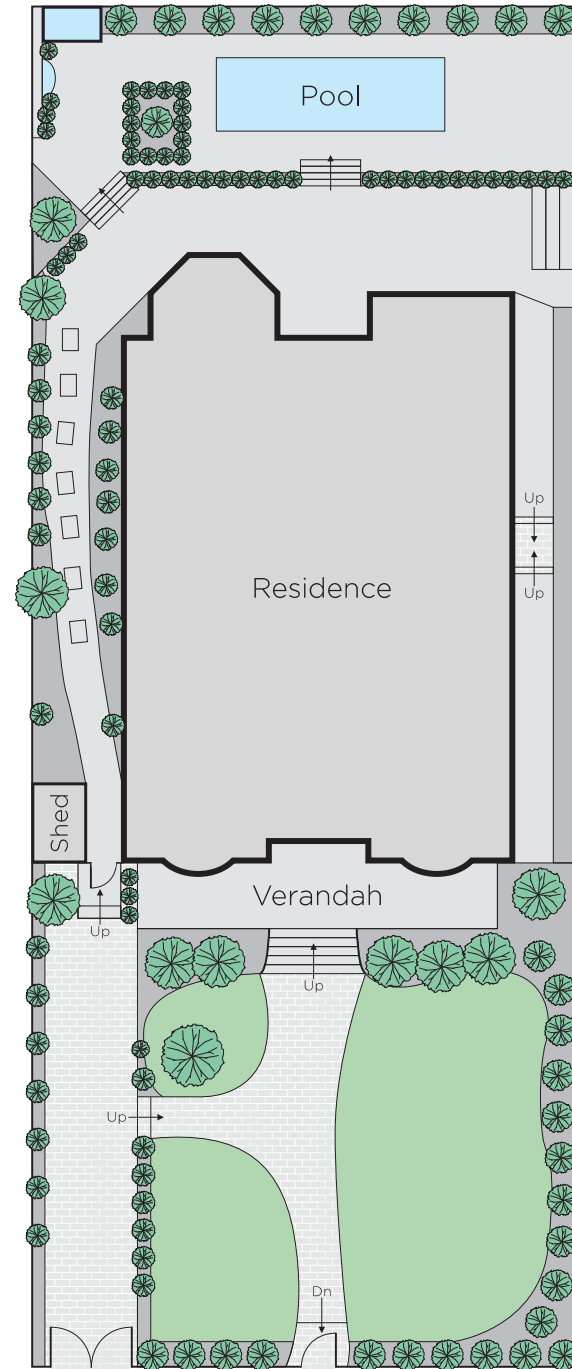
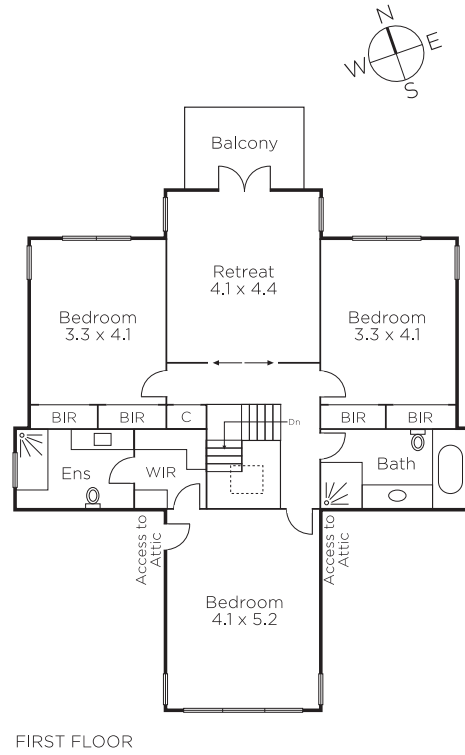
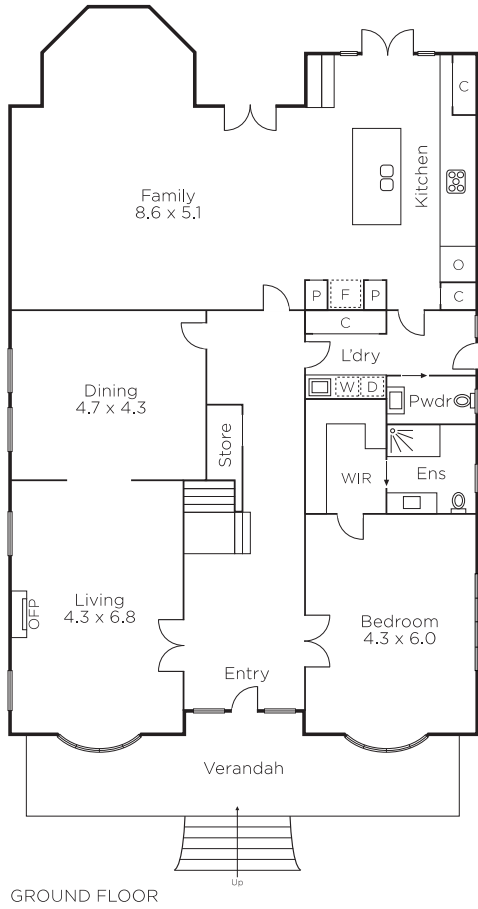
Samara Bella-Coulson
0488 111 915

Doug McLauchlan
0418 377 718

Chris Burne
0412 310 535


MARSHALLWHITE

801 Glenferrie Road, Hawthorn



Disclaimer: Information provided is believed to be accurate as at the date of printing, no responsibility is taken for any errors or omissions. It is your responsibility to obtain independent, professional advice. Personal information collected from you is for security purposes and to contact you should the property sell prior to auction. We may use this information to provide you with other real estate services including referrals to authorised financial services' providers. Visit our website at www.marshallwhite.com.au for our privacy policy.